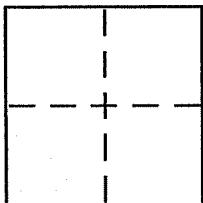


CORNER RECORD

Document Number 060-021-07
County of Marin, California

City of Belvedere

Brief Legal Description Lot 5 8 Rm 25



CORNER TYPE

Government Corner Control
Meander Property
Rancho Other
Date of Survey _____

COORDINATES (Optional)

N. _____
E. _____
Zone _____ NAD27 NAD83
NAD83 Epoch _____
Elev. _____
Vert. Datum: NGVD29 NAVD88
Meas. Units: Metric Imperial

Corner - Left as found Found and tagged Established Reestablished Rebuilt

Identification and type of corner found: Evidence used to identify or procedure used to establish or reestablish the corner:

See page 2 of 2

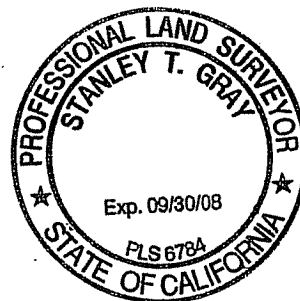
A description of the physical condition of the monument as found and as set or reset:

See Page 2 of 2

SURVEYOR'S STATEMENT

This Corner Record was prepared by me or under my direction in conformance with the Land Surveyor's Act on 8/20 2008

Signed [Signature] P.L.S or R.C.E. No. 6784



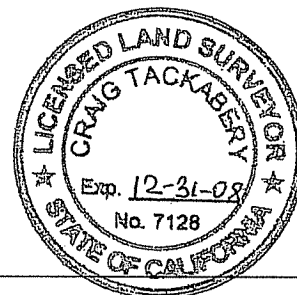
COUNTY SURVEYOR'S STATEMENT

This Corner Record was received AUGUST 26, 2008

and examined and filed SEPTEMBER 17, 2008

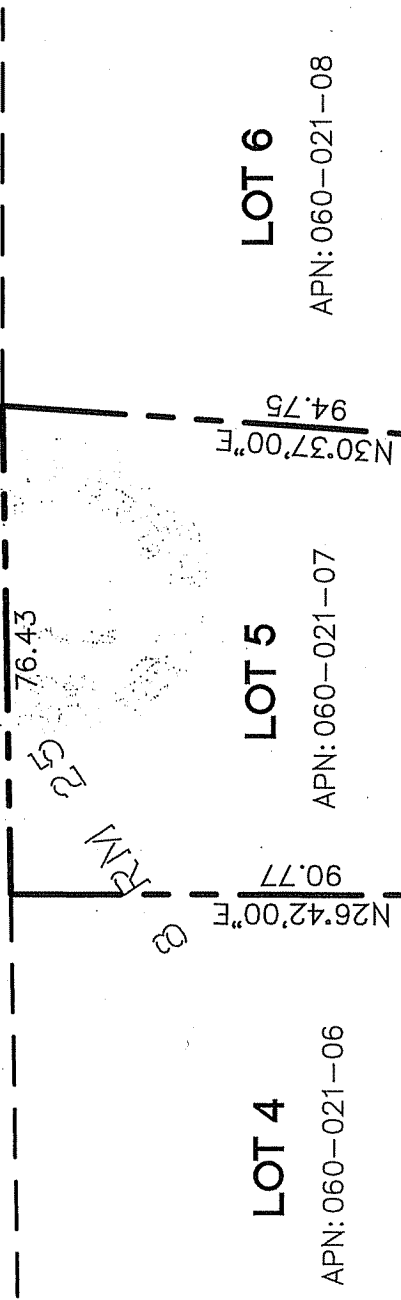
Signed [Signature] P.L.S or R.C.E. No. 7128

Title COUNTY SURVEYOR



County Surveyor's Comment _____

BELVEDERE LAGOON
N64°20'00"W
76.43



LOT 4
APN: 060-021-06

LOT 5
APN: 060-021-07

LOT 6
APN: 060-021-08

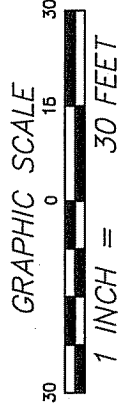
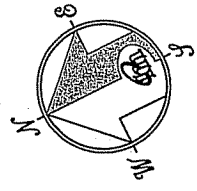
$L=48.52$
 $\Delta=2^{\circ}42'25''$
 $R=1027.00$

$L=35.00'$
 $L=70.00$
 $\Delta=3^{\circ}54'19''$
 $R=1027.00$

$L=191.99$
 $\Delta=11^{\circ}00'00''$
 $R=1000.00$

$S55^{\circ}00'00''E$
60.06

$L=261.80$
 $\Delta=15^{\circ}00'00''$
 $R=1000.00$



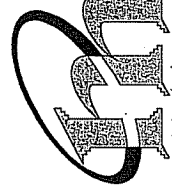
LEGEND

- ⊗ FOUND STREET MONUMENT PER [A]
- SET LEAD PLUG AND TAG PLS 6784
- ⊙ SET TAG ON SHED PLS 6784

NOTE
RECORD=MEASURED

REFERENCE

[A] "MAP OF LAGOON SUBDIVISION NO. 6" FILED FOR RECORD OCTOBER 7, 1954 IN VOLUME 8 OF MAPS, AT PAGE 25, MARIN COUNTY RECORDS.



CORNER RECORD

MERIDIAN SURVEYING ENGINEERING, INC.

1812 UNION STREET
SAN FRANCISCO, CA 94123
(415) 440-4131
info@meridiansurvey.com

777 GRAND AVENUE, SUITE 202
SAN RAFAEL, CA 94901
(415) 646-6660