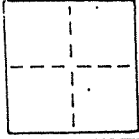


CORNER RECORD

COUNTY OF Marin T. _____ R. _____ MERIDIAN _____ CALIFORNIA

CORNER TYPE: GOVT. CORNER MEANDER RANCHO CONTROL OTHER

CORNER IDENTIFICATION — DATE OF VISIT June 19 89



Monument per map 5 R.M. 89
 Centerline Lagoon Road @ subdivision boundary AP 60-011-01
 Near #22 & #24 Lagoon Road, City of Belvedere # 60-011-37

CORNER — LEFT AS FOUND FOUND AND TAGGED REESTABLISHED OBLITERATED CORNER REBUILT

PHYSICAL DESCRIPTION OF CORNER FOUND; EVIDENCE AND METHOD USED TO IDENTIFY OR REESTABLISH

Found 1-1/2" pipe 17" below pavement surface
 Offset during repaving
 Original position perpetuated, distances not verified

PHYSICAL DESCRIPTION OF MONUMENTS, REBUILT OR PERPETUATED

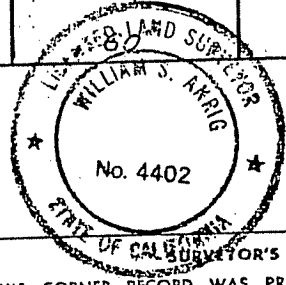
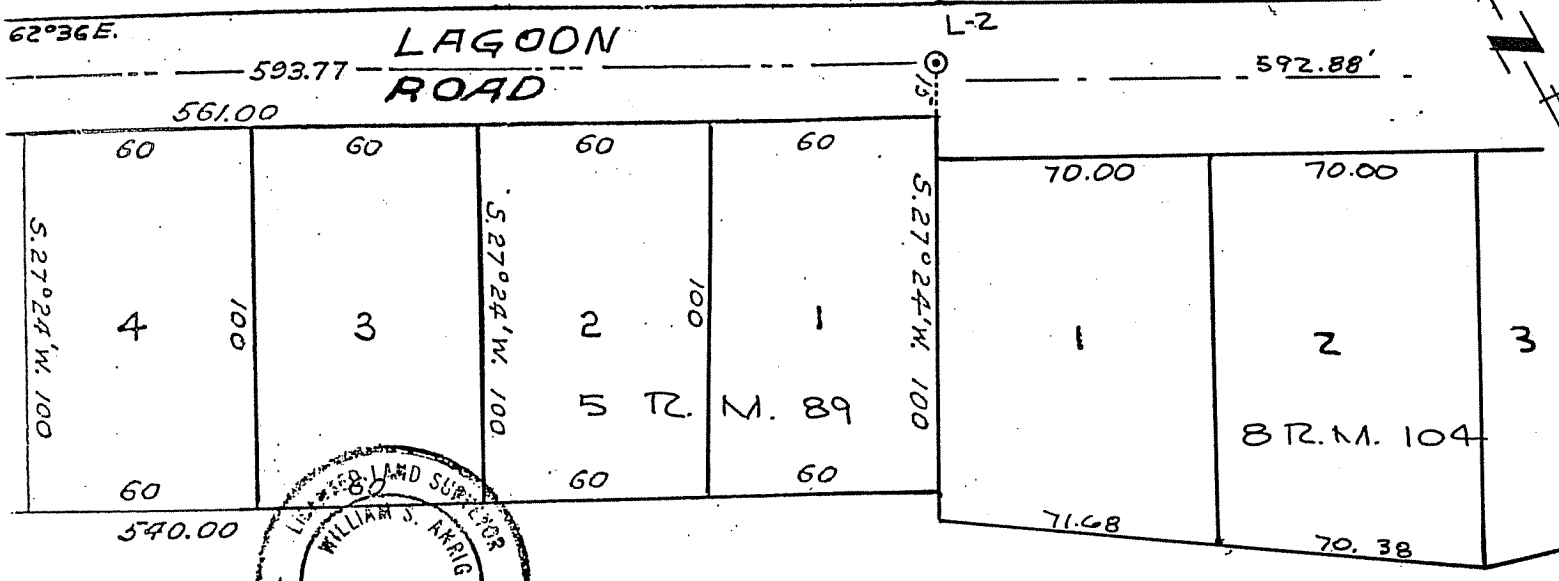
Standard cast iron street monument

CALIFORNIA COORDINATE SYSTEM ORDER: FIRST SECOND THIRD

STATIONS USED: NGS (USC & GS) STATE COUNTY OTHER STATION _____ STATION _____

ZONE _____ ELEVATION _____ NORTHINGS (Y) _____ EASTINGS (X) _____

SKETCH: (Include reference tie or witness points, remarks and topo of area)



LAND SURVEYOR'S CERTIFICATE
 THIS CORNER RECORD WAS PREPARED BY ME OR UNDER MY DIRECTION IN CONFORMANCE WITH THE LAND SURVEYORS ACT ON NOVEMBER 1 19 90

SIGNED: William S. Arrig
 L.S. or R.C.E. No.: L.S. 4402 Exp 9-30-93

SEAL

COUNTY SURVEYOR'S OFFICE
 THE CORNER RECORD WAS RECEIVED, EXAMINED AND FILED BY: _____ TITLE: _____ DOCUMENT No. _____ STATEMENT ON BACK OF SHEET YES NO

