

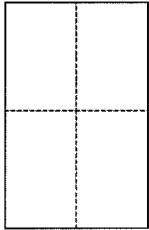
CORNER RECORD

Document Number 060-011-28

City of Belvedere

County of Marin, California

Brief Legal Description Lot 2, Lagoon Subdivision No. 7, filed in Book 8 of Maps, at Page 104, Marin County Records.



CORNER TYPE

Government Corner Control
Meaneder Property
Rancho Other
Date of Survey 03/27/15 & 03/30/15

COORDINATES (Optional)

N. _____
E. _____
Zone _____ NAD27 NAD83
NAD83 Epoch _____
Elev. _____
Vert. Datum: NGVD29 NAVD88
Meas. Units: Metric Imperial

Corner – Left as found Found and tagged Established Reestablished Rebuilt

Identification and type of corner found: Evidence used to identify or procedure used to establish or reestablish the corner:

Found Centerline Street Monumnets to be in good condition and record position as shown on above said map.

A description of the physical condition of the monument as found and as set or reset: _____

Set (3) Brass Tags LS7237 and (1) 1/2" Iron Pipe LS7237 as witness corners as shown on attached map.

SURVEYOR'S STATEMENT

This Corner Record was prepared by me or under my direction in conformance with the Land Surveyor's Act on APRIL 3, 2015

Signed Michael E. Ford P.L.S. or R.C.E. No. 7237



COUNTY SURVEYOR'S STATEMENT

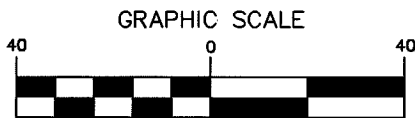
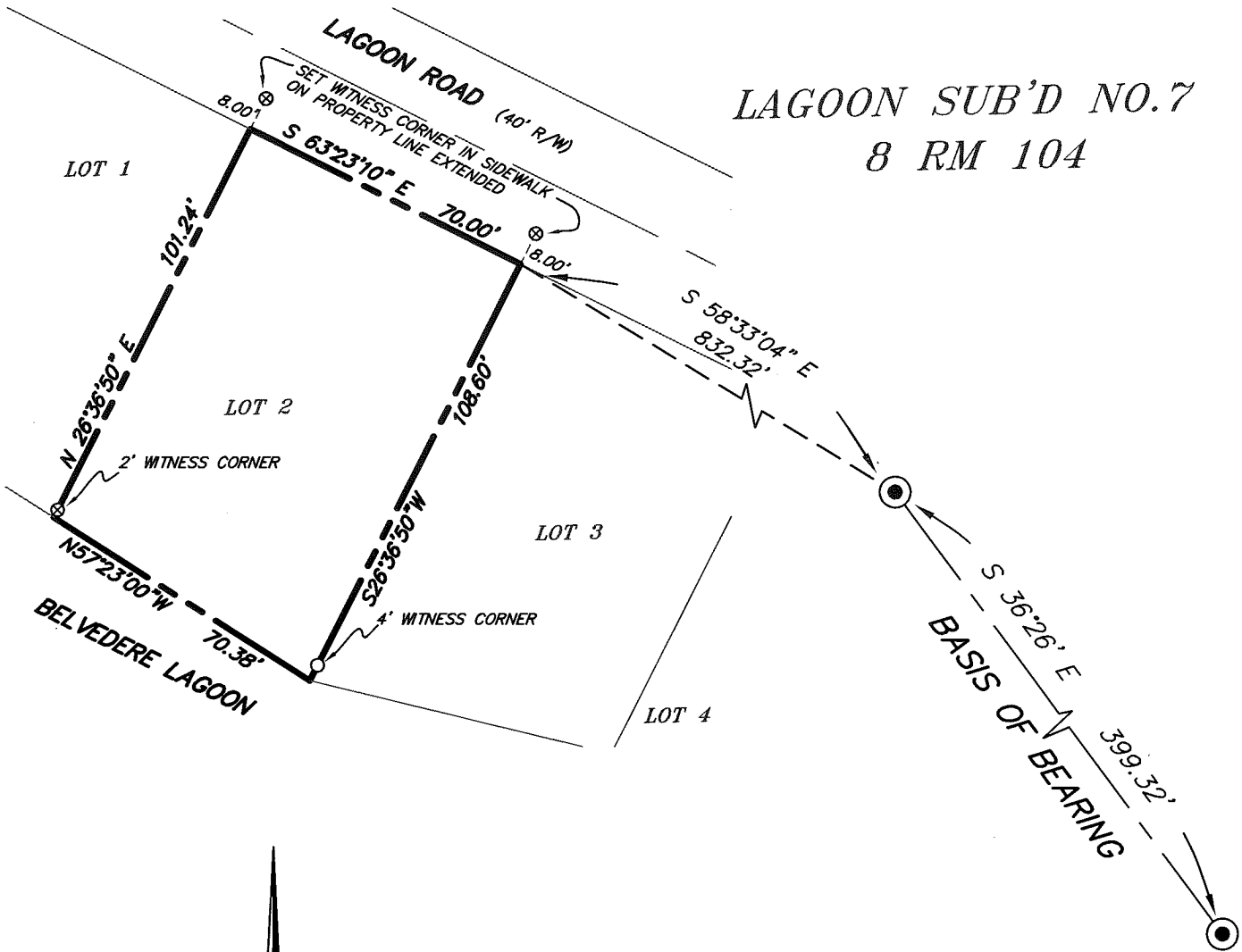
This Corner Record was received APRIL 6, 2015 and examined and filed MAY 4th, 2015

Signed Richard G. Simonitch P.L.S. or R.C.E. No. 7821
Title DEPUTY



County Surveyor's Comment

LAGOON SUB'D NO.7 8 RM 104



(IN FEET)
1 inch = 40 ft.

LEGEND

- FOUND CL STREET MONUMENT, 2" BRASS DISK, PUNCHED
- SET 1/2" IRON PIPE LS7237
- ⊗ SET BRASS TAG LS7237

BASIS OF BEARINGS

S 36°26' E BETWEEN FOUND CENTERLINE STREET MONUMENTS, AS SHOWN ON LAGOON SUB'D NO.7, FILED IN 8 RM 104, MARIN COUNTY RECORDS.

NOTE:

ALL COURSES SHOWN HEREON ARE RECORD AND MEASURED PER 8 RM 104, M.C.R.



2300 bethards drive, suite J

santa rosa, california 95405

p 707.542.8513 - f 707.542.1825

www.michaelfordinc.com