

CORNER RECORD

COUNTY OF Marin T. _____ R. _____ MERIDIAN _____ CALIFORNIA

CORNER TYPE: GOVT. CORNER MEANDER RANCHO CONTROL OTHER
CORNER IDENTIFICATION — DATE OF VISIT June 19 89



Monument per map 5 R.M. 89
Intersection courses S 67-14 W & S 62-36 E
Near #4 Lagoon Road City of Belvedere AP 60-011-10

CORNER — LEFT AS FOUND FOUND AND TAGGED REESTABLISHED OBLITERATED CORNER REBUILT

PHYSICAL DESCRIPTION OF CORNER FOUND; EVIDENCE AND METHOD USED TO IDENTIFY OR REESTABLISH

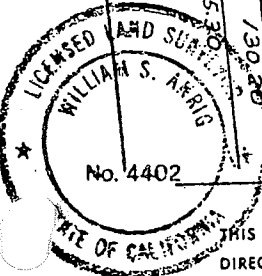
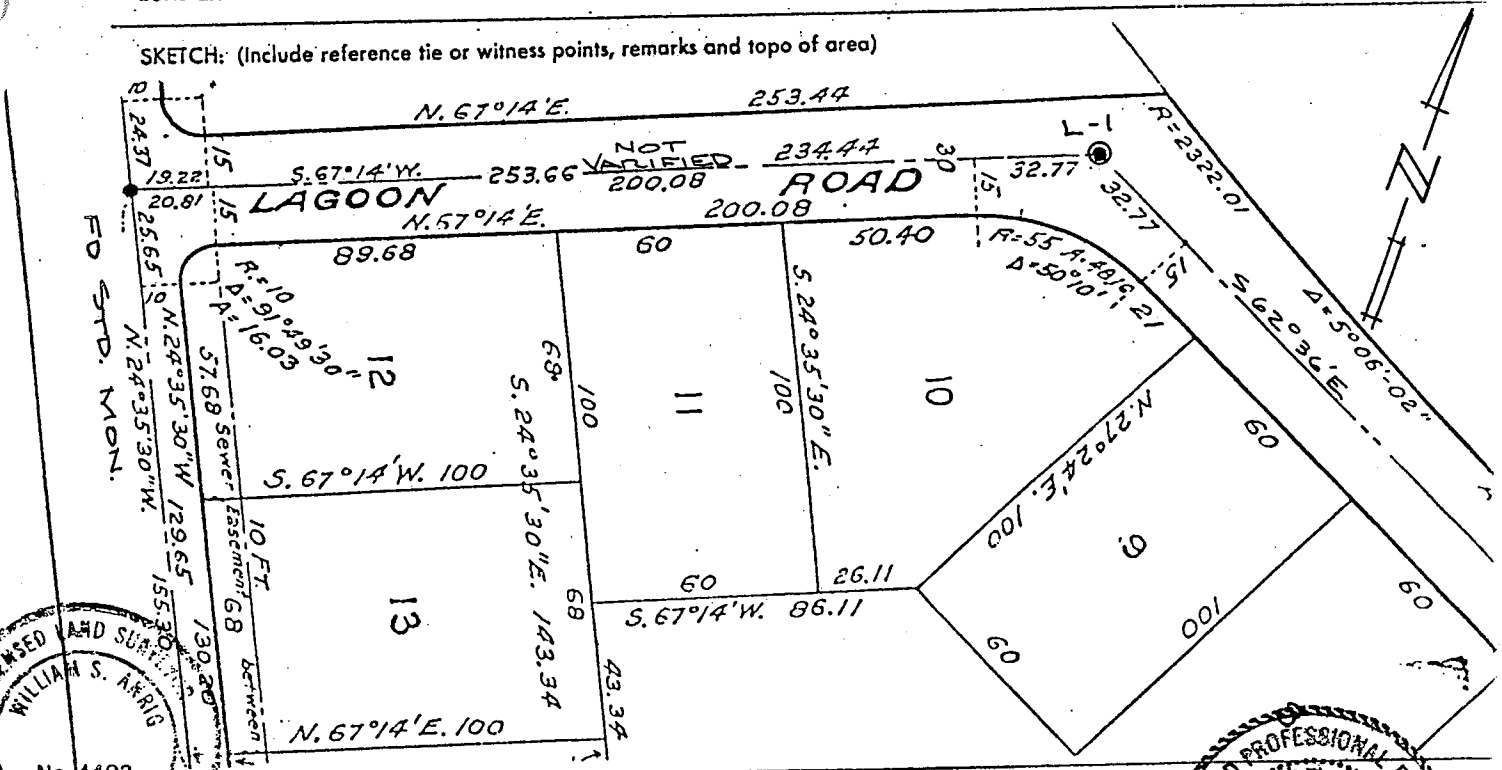
Found Tag L.S. 2738 on pavement
Found 1-1/2" pipe 9" below pavement surface (disturbed)
Offset during repaving
Original position perpetuated, distances not verified

PHYSICAL DESCRIPTION OF MONUMENTS, REBUILT OR PERPETUATED

Standard cast iron street monument

CALIFORNIA COORDINATE SYSTEM ORDER: FIRST SECOND THIRD
STATIONS USED: NGS (USC & GS) STATE COUNTY OTHER STATION _____ STATION _____
ZONE _____ ELEVATION _____ NORTHINGS (Y) _____ EASTINGS (X) _____

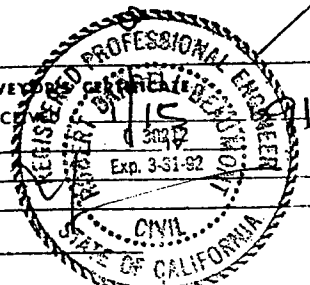
SKETCH: (Include reference tie or witness points, remarks and topo of area)



SURVEYOR'S CERTIFICATE
THIS CORNER RECORD WAS PREPARED BY ME OR UNDER MY DIRECTION IN CONFORMANCE WITH THE LAND SURVEYORS ACT ON NOVEMBER 1 1990

SIGNED: William S. Aris
L.S. or R.C.E. No. L.S. 4402 EXP 9-30-93

COUNTY SURVEYOR _____
THE CORNER RECORD WAS RECHECKED AND EXAMINED AND FILED BY: _____ TITLE: _____
DOCUMENT No. _____
STATEMENT ON BACK OF SHEET YES NO



SEAL