

# CORNER RECORD

Agency Index DPW#19-113

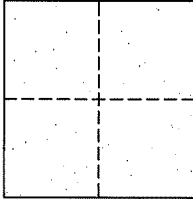
Document Number APN 060-011-02

City of BELVEDERE County of MARIN, California

Brief Legal Description LOT 2 OF MAP OF HILARITA LAGOON SITE (5 RM 89)

### CORNER TYPE

### COORDINATES (Optional)



- Government Corner
- Meander
- Rancho
- Control
- Property
- Other

Date of Survey JULY 17, 2019

N. \_\_\_\_\_ E. \_\_\_\_\_

Elevation \_\_\_\_\_

Units  Metric  U.S. Survey Foot

Horizontal Datum \_\_\_\_\_

Zone \_\_\_\_\_ Epoch Date \_\_\_\_\_

Vertical Datum \_\_\_\_\_

Complies with Public Resources Code §§8801-8819

Complies with Public Resources Code §§8890-8902

PLS Act Ref.:  8765(d)  8771  8773  Other:

Corner/Monument:  Left as found  Established  Rebuilt  Pre-Construction

Found and tagged  Reestablished  Referenced  Post-Construction

Narrative of corner identified and monument as found, set, reset, replaced, or removed:

See sheet #2 for description(s):

### SURVEYOR'S STATEMENT

This Corner Record was prepared by me or under my direction in conformance with the Professional Land Surveyors' Act on NOVEMBER 12, 2019

Signed [Signature] P.L.S. or R.C.E. No. 9022



### COUNTY SURVEYOR'S STATEMENT

This Corner Record was received SEPTEMBER 9, 2019

and examined and filed NOV. 21, 2019

Signed [Signature] P.L.S. or R.C.E. No. 9292

Title DEPUTY C.S.

County Surveyor's Comment \_\_\_\_\_

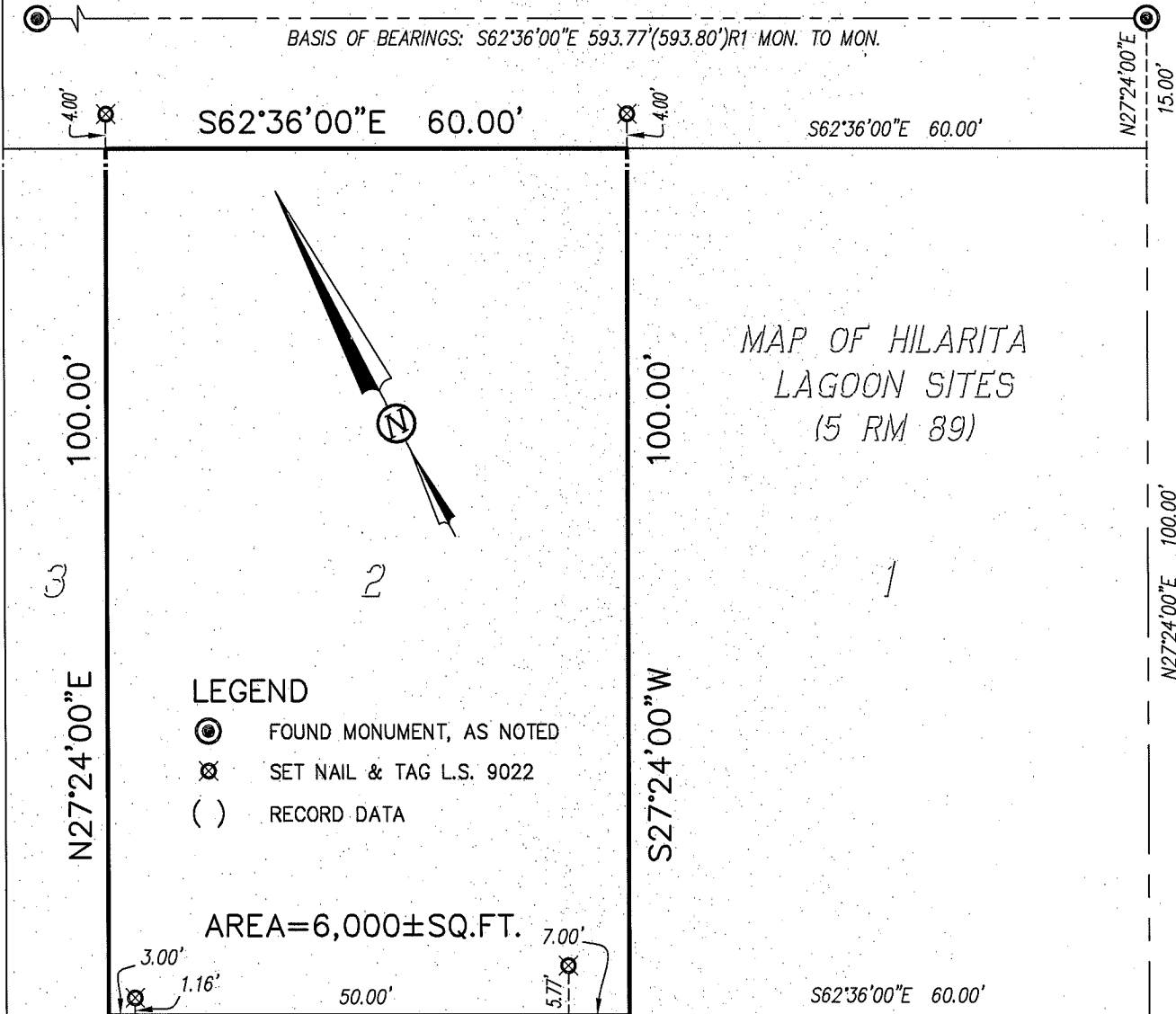


FOUND MONUMENT WELL  
DISC W/ PUNCH, L.S. 4402  
(R1: IRON MON.)  
L-1: SET PER CORNER  
RECORD 060-011-10

# LAGOON ROAD (30' WIDE)

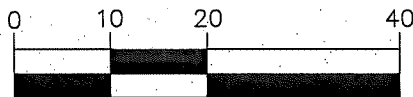
FOUND MONUMENT WELL  
DISC W/ PUNCH, L.S. 4402  
(R1: IRON MON.)  
L-2: SET PER CORNER  
RECORD 060-011-01

BASIS OF BEARINGS: S62°36'00"E 593.77'(593.80')R1 MON. TO MON.



## BELVEDERE LAGOON

### GRAPHIC SCALE



( IN FEET )  
1 inch = 20 ft.

### BASIS OF BEARINGS:

S62°36'00"E BETWEEN FOUND MONUMENTS WITHIN LAGOON ROAD  
AS SHOWN ON MAP OF HILARITA LAGOON SITE (5 RM 89)

### REFERENCES:

R1 MAP OF HILARITA LAGOON SITE (5 RM 89)

### BAY AREA LAND SURVEYING INC.

3065 RICHMOND PARKWAY, SUITE 101  
RICHMOND, CA 94806  
(510) 223-5167