

CORNER RECORD

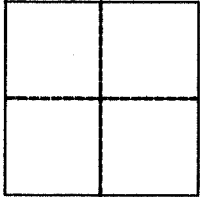
Agency Index 21-123

Document Number 059-195-27

City of Tiburon

County of Marin, California

Brief Legal Description Southwesterly line of Parcel 1, I.N. 2017-0041839



CORNER TYPE

- Government Corner Control
 Meander Property
 Rancho Other

COORDINATES (Optional)

- N. _____ E. _____
 Elevation _____
 Units Metric U.S. Survey Foot
 Horizontal Datum _____
 Zone _____ Epoch Date _____
 Vertical Datum _____

Date of Survey October 6, 2021

- Complies with Public Resources Code §§8801-8819
 Complies with Public Resources Code §§8890-8902

PLS Act Ref: 8765(d) 8771 8773 Other:

Corner/Monument: Left as found Established Rebuilt Pre-Construction
 Found and tagged Reestablished Referenced Post-Construction

Narrative of corner identified and monument as found, set, reset, replaced, or removed:
 See sheet #2 for description (s):

SURVEYOR'S STATEMENT

This Corner Record was prepared by me or under my direction in conformance with
 the Professional Land Surveyors' Act on October 28, 2021

Signed [Signature] P.L.S. or R.C.E. No. 6649



COUNTY SURVEYOR'S STATEMENT

This Corner Record was received 11.1.21

and examined and filed 1.31.22

Signed [Signature] P.L.S. or R.C.E. No. 9292

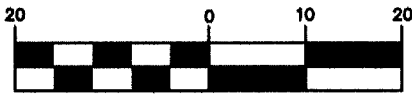
Title DEPUTY



County Surveyor's Comment _____

All distances shown are in feet and decimals thereof

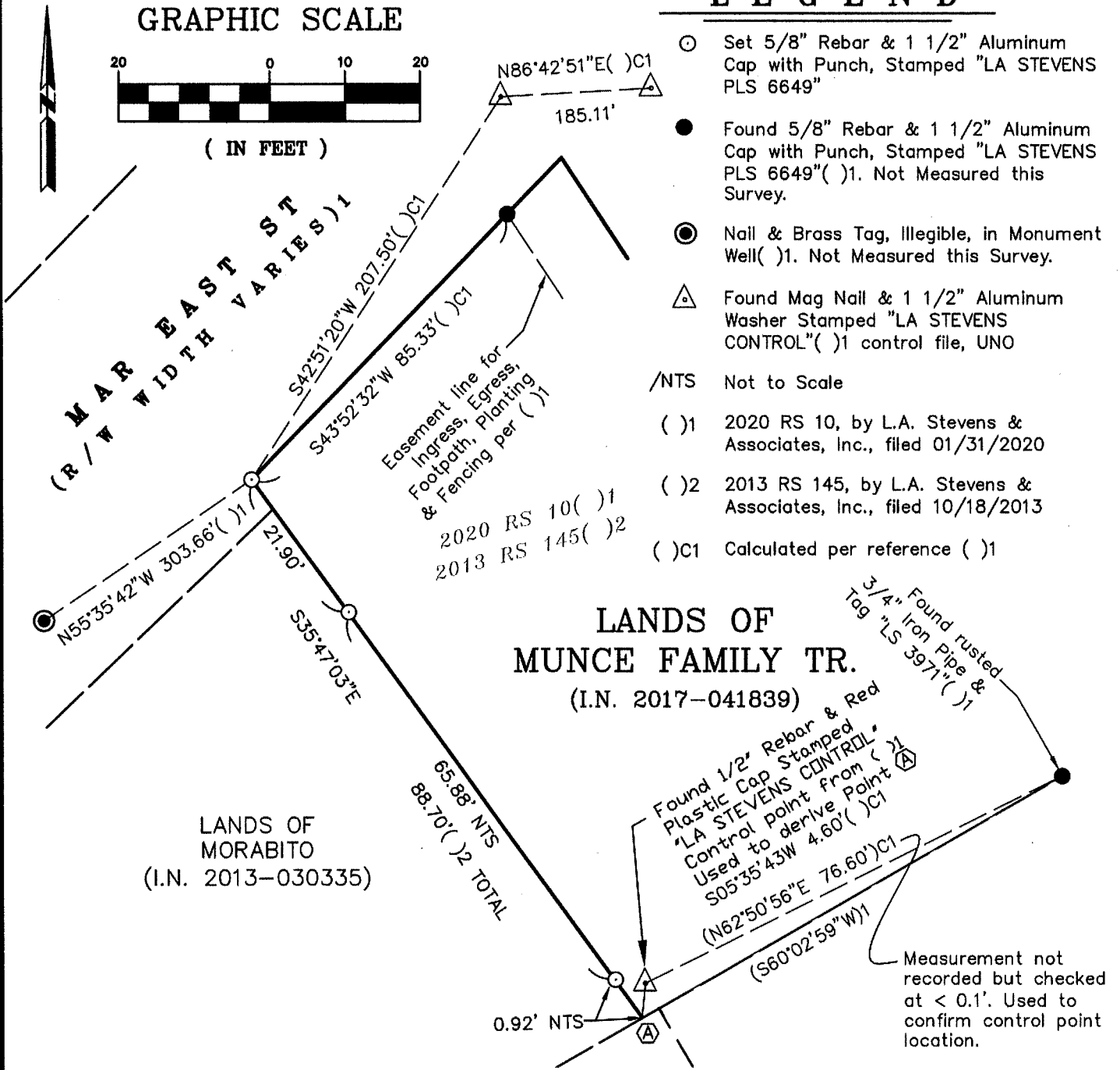
GRAPHIC SCALE



(IN FEET)

LEGEND

- Set 5/8" Rebar & 1 1/2" Aluminum Cap with Punch, Stamped "LA STEVENS PLS 6649"
- Found 5/8" Rebar & 1 1/2" Aluminum Cap with Punch, Stamped "LA STEVENS PLS 6649"()1. Not Measured this Survey.
- ⊙ Nail & Brass Tag, Illegible, in Monument Well()1. Not Measured this Survey.
- △ Found Mag Nail & 1 1/2" Aluminum Washer Stamped "LA STEVENS CONTROL"()1 control file, UNO
- /NTS Not to Scale
- ()1 2020 RS 10, by L.A. Stevens & Associates, Inc., filed 01/31/2020
- ()2 2013 RS 145, by L.A. Stevens & Associates, Inc., filed 10/18/2013
- ()C1 Calculated per reference ()1



Corner Record
Lands of Munce Family Tr.

(Southwesterly line of Parcel 1, I.N. 2017-0041839)
Town of Tiburon
Marin County California
Scale: 1" = 20' October 28, 2021
L.A. Stevens & Associates, Inc.
Professional Land Surveyors * (415) 382-7713
7 Commercial Blvd., Suite 1 * Novato, CA 94949
Job # 191958

Lawrence A. Stevens, PLS 6649
Copyright © Lawrence A. Stevens 2021