

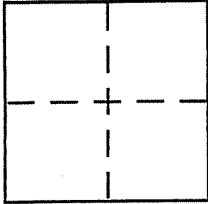
**CORNER RECORD**

Document Number APN 59-192-06

City of Tiburon

County of MARIN, California

Brief Legal Description APN 59-192-06 per 10 R.M. 68



**CORNER TYPE**

- Government Corner  Control
- Meander  Property
- Rancho  Other
- Date of Survey \_\_\_\_\_

**COORDINATES (Optional)**

N. \_\_\_\_\_  
 E. \_\_\_\_\_  
 Zone \_\_\_\_\_ NAD27  NAD83   
 NAD83 Epoch \_\_\_\_\_  
 Elev. \_\_\_\_\_  
 Vert. Datum: NGVD29  NAVD88   
 Meas. Units: Metric  Imperial

Corner -- Left as found  Found and tagged  Established  Reestablished  Rebuilt

Identification and type of corner found: Evidence used to identify or procedure used to establish or reestablish the corner:

See Back

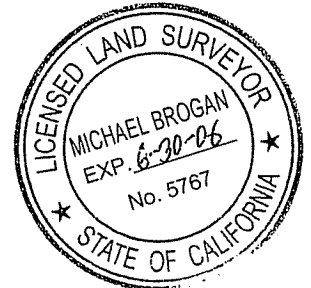
A description of the physical condition of the monument as found and as set or reset:

See Back

**SURVEYOR'S STATEMENT**

This Corner Record was prepared by me or under my direction in conformance with the Land Surveyor's Act on January 8 2006

Signed Michael A. Brogan P.L.S or R.C.E. No. LS 5767



**COUNTY SURVEYOR'S STATEMENT**

This Corner Record was received JANUARY 11, 2006

and examined and filed FEBRUARY 8, 2006

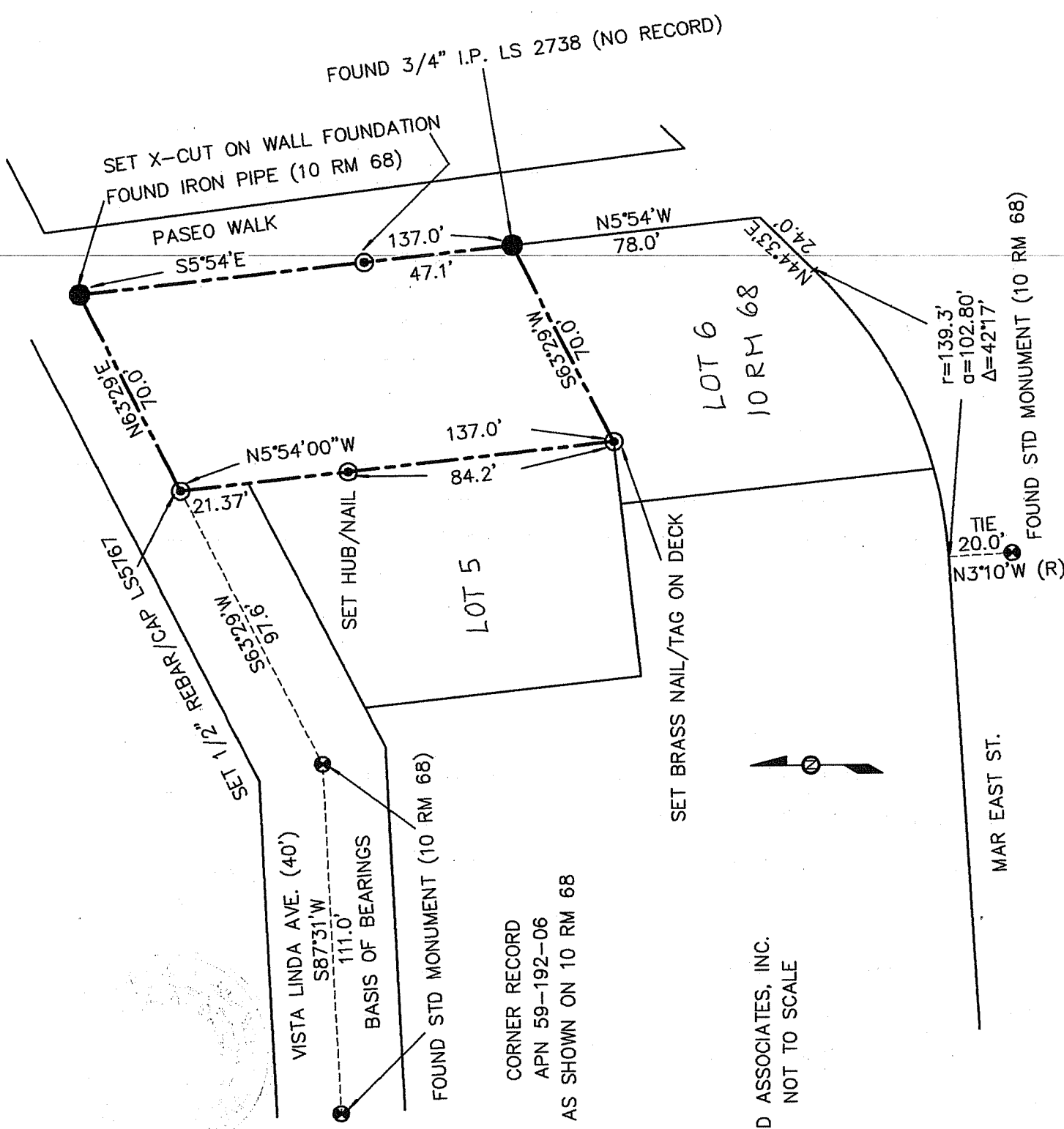
Signed \_\_\_\_\_ P.L.S or R.C.E. No. 7128

Title COUNTY SURVEYOR



County Surveyor's Comment \_\_\_\_\_

\_\_\_\_\_  
 \_\_\_\_\_



CORNER RECORD  
 APN 59-192-06  
 AS SHOWN ON 10 RM 68

M. BROGAN AND ASSOCIATES, INC.  
 JOB NO. 5655 NOT TO SCALE