

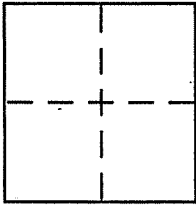
CORNER RECORD

Document Number APN 059-132-27

City of Tiburon

County of Marin, California

Brief Legal Description As shown on 2005 M 237



CORNER TYPE

Government Corner Control
Meander Property
Rancho Other
Date of Survey 10-14-10

COORDINATES (Optional)

N. _____
E. _____
Zone _____ NAD27 NAD83
NAD83 Epoch _____
Elev. _____
Vert. Datum: NGVD29 NAVD88
Meas. Units: Metric Imperial

Corner - Left as found Found and tagged Established Reestablished Rebuilt

Identification and type of corner found: Evidence used to identify or procedure used to establish or reestablish the corner:

See page 2 of 2

A description of the physical condition of the monument as found and as set or reset:

See page 2 of 2

SURVEYOR'S STATEMENT

This Corner Record was prepared by me or under my direction in conformance with the Land Surveyor's Act on 10 / 13 2010

Signed [Signature] P.L.S or R.C.E. No. 6784



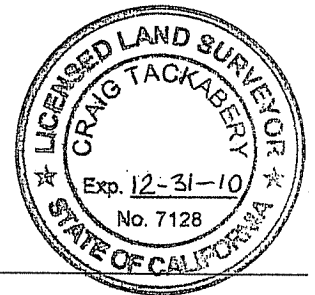
COUNTY SURVEYOR'S STATEMENT

This Corner Record was received OCTOBER 20, 2010

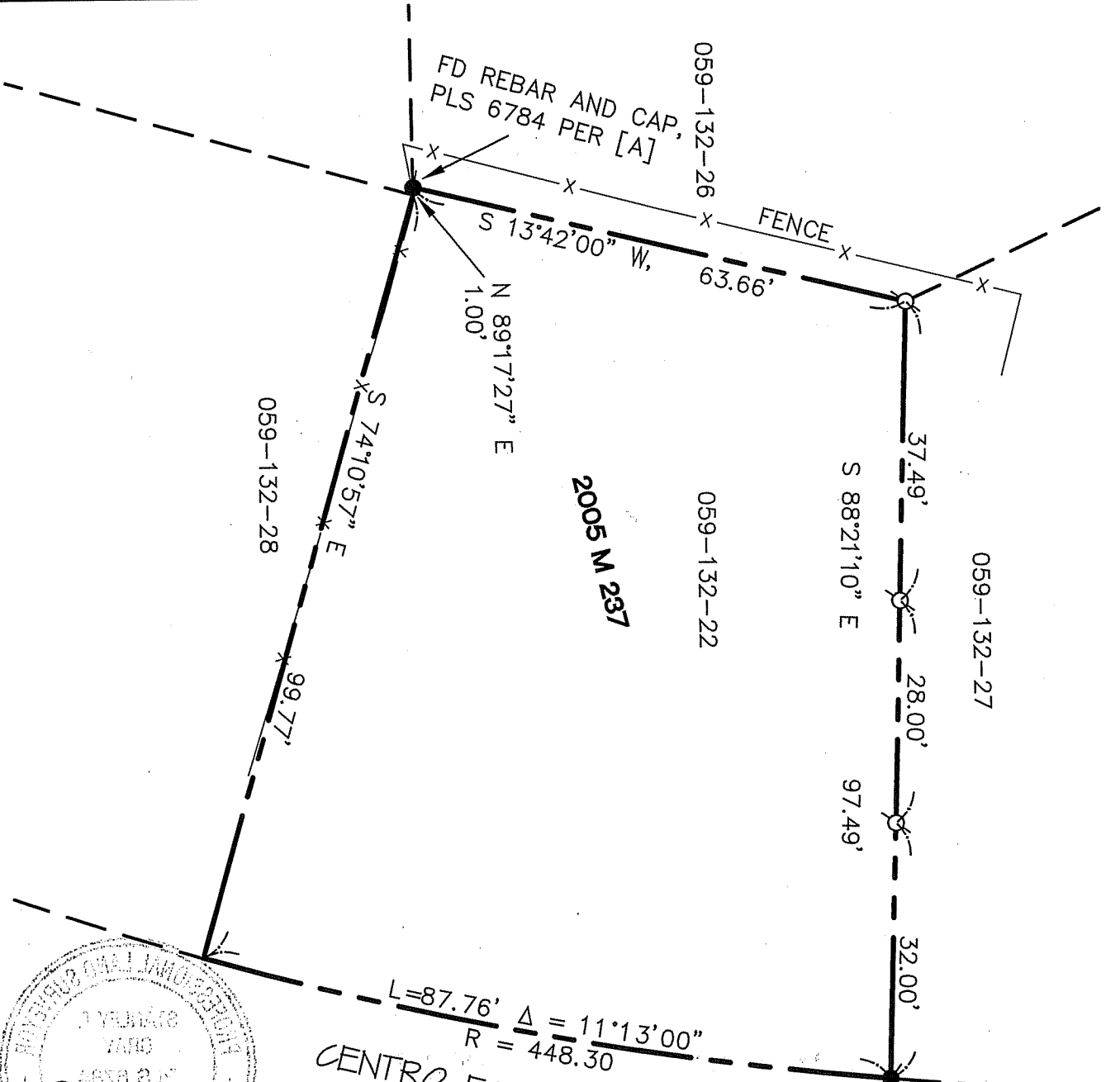
and examined and filed NOVEMBER 3, 2010

Signed [Signature] P.L.S or R.C.E. No. 7128

Title COUNTY SURVEYOR

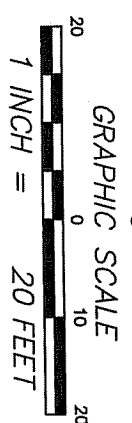
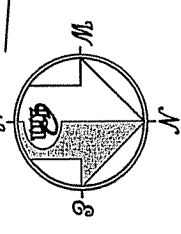


County Surveyor's Comment _____



$L=87.76'$ $\Delta = 11'13''00''$
 $R = 448.30$
 CENTRO EAST (60' WIDE)

FD REBAR AND CAP,
 PLS 6784 PER [A]

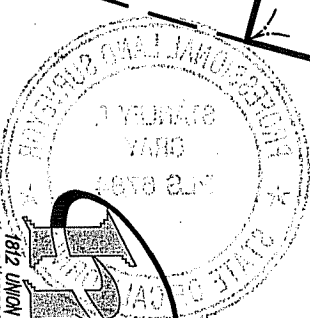


REFERENCE
 RECORD OF SURVEY, LANDS OF
 BROEK FILED FOR RECORD
 SEPTEMBER 6, 2005 IN BOOK 2005
 OF MAPS, AT PAGE 237, MARIN
 COUNTY RECORDS.

LEGEND

- FOUND MONUMENT AS NOTED
- SET 5/8" REBAR WITH CAP, PLS 6784
- [A] 2005 M 237
- NOTE
RECORD=MEASURED

CORNER RECORD



MERIDIAN SURVEYING ENGINEERING, INC.
 1812 UNION STREET
 SAN FRANCISCO, CA 94123 10100
 (415) 440-4131 Info@meridiansurvey.com
 777 GRAND AVENUE, SUITE 202
 SAN RAFAEL, CA 94901
 (415) 456-5450