

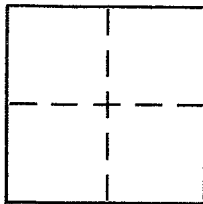
**CORNER RECORD**

Document Number 59.122.12

City of TIBURON

County of MARIN, California

Brief Legal Description LANDS OF KIRWIN (formerly PRELL) see 29 05 53



**CORNER TYPE**

Government Corner  Control   
Meander  Property   
Rancho  Other   
Date of Survey Sept 7, 2005

**COORDINATES (Optional)**

N. \_\_\_\_\_  
E. \_\_\_\_\_  
Zone \_\_\_\_\_ NAD27  NAD83   
NAD83 Epoch \_\_\_\_\_  
Elev. \_\_\_\_\_  
Vert. Datum: NGVD29  NAVD88   
Meas. Units: Metric  Imperial

Corner - Left as found  Found and tagged  Established  Reestablished  Rebuilt

Identification and type of corner found: Evidence used to identify or procedure used to establish or reestablish the corner:

REESTABLISH THE NORTHERLY LINE OF THAT CERTAIN TRACT OF LAND IDENTIFIED AS THE LANDS OF PRELL (COMMON WITH THE LANDS OF MAAS) AS SURVEYED PER 29 05 53. SEE SKETCH FOR DETAILS FOR FOUND MONUMENTATION OF SAID 29 05 53 USED PER THIS SURVEY

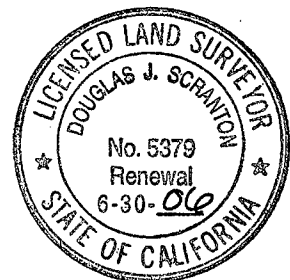
A description of the physical condition of the monument as found and as set or reset:

set either BRASS NAIL WITH BRASS TAG STAMPED LS 5379 IN PAVEMENT AT NORTHEASTERLY CORNER OR set RANDOMLY PLACED ONE POINTS ~ 1/2" REBAR WITH PLS CAP 5379 AFFIXED TO TOP & DRIVEN FLUSH TO SURROUNDING GRADE

**SURVEYOR'S STATEMENT**

This Corner Record was prepared by me or under my direction in conformance with the Land Surveyor's Act on October 8, 2005

Signed Douglas J. Scranton P.L.S. or R.C.E. No. PLS 5379



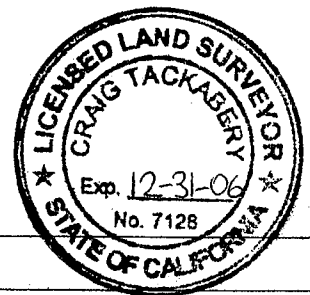
**COUNTY SURVEYOR'S STATEMENT**

This Corner Record was received OCTOBER 12, 2005

and examined and filed NOVEMBER 10, 2005

Signed \_\_\_\_\_ P.L.S. or R.C.E. No. 7128

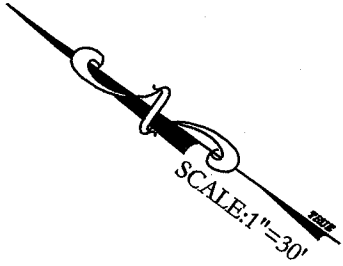
Title COUNTY SURVEYOR



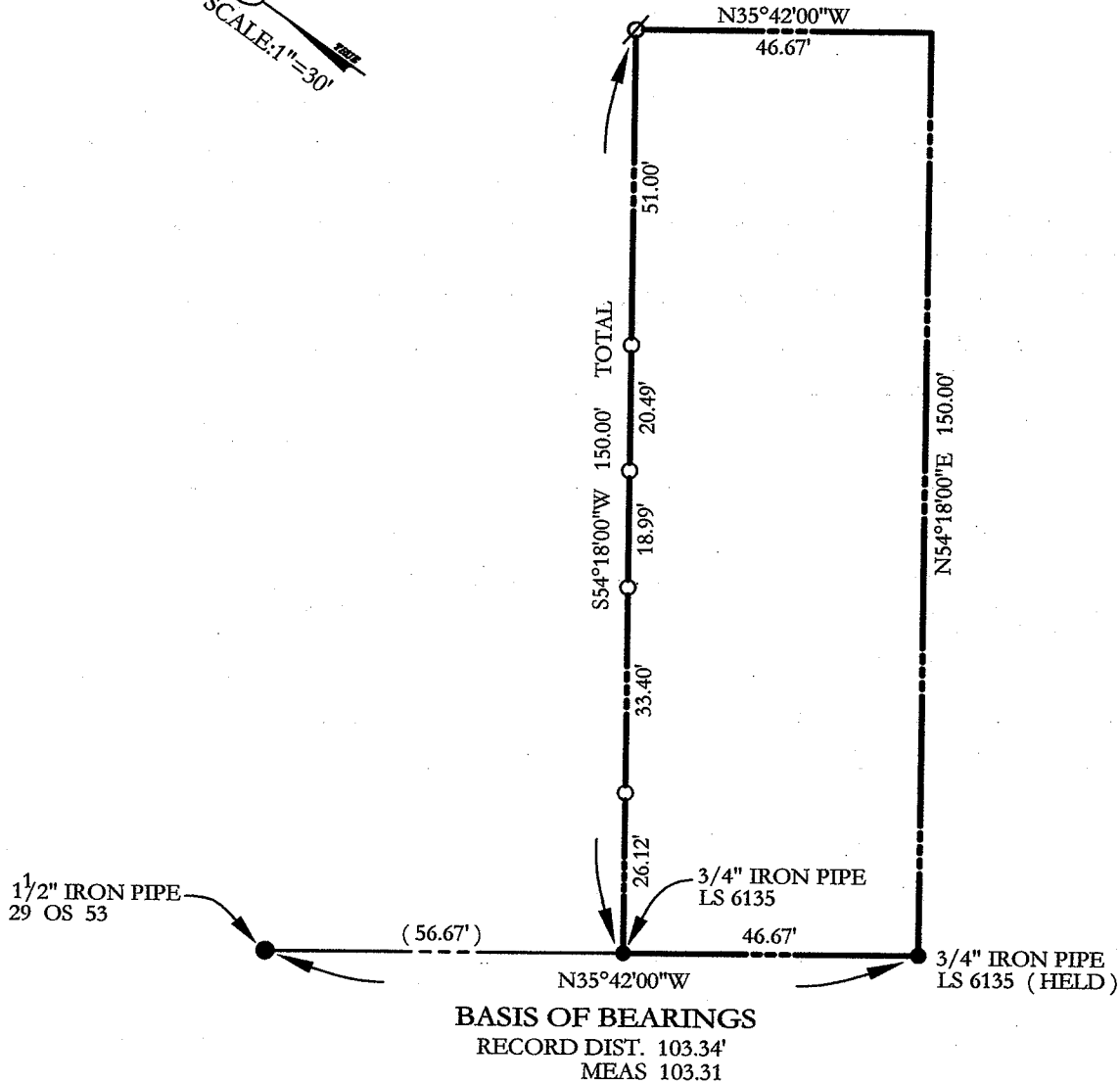
County Surveyor's Comment \_\_\_\_\_

PREPARED BY: DJ SCRANTON SURVEYING NOVATO, CA

JUL 10537



CENTRO WEST



**BASIS OF BEARINGS**  
 RECORD DIST. 103.34'  
 MEAS 103.31

**BASIS OF BEARINGS**

TAKEN AS N35°42'00\"/>

**LEGEND**

- SET 1/2\"/>
- ∅ SET LEAD PLUG WITH BRASS TAG LS 5379 WITH BRASS PIN IN PAVEMENT

ALL DISTANCES GIVEN IN FEET AND DECIMALS THEREOF

NO EASEMENTS ARE DEPICTED