

CORNER RECORD

Agency Index CR24-018

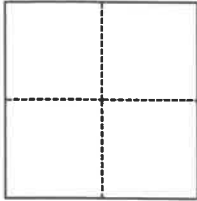
Document Number 059-091-58 (Adj)

City of TIBURON County of MARIN, California

Brief Legal Description FND REBAR IN MON WELL AT CL INT RIDGE & STRAITS VIEW (RS02-160)

CORNER TYPE

COORDINATES (Optional)



- Government Corner
- Meander
- Rancho
- Control
- Property
- Other

Date of Survey August 27, 2023

N. _____ E. _____

Elevation _____

Units Metric U.S. Survey Foot

Horizontal Datum _____

Zone _____ Epoch Date _____

Vertical Datum _____

Complies with Public Resources Code §§8801-8819

Complies with Public Resources Code §§8890-8902

PLS Act Ref.: 8765(d) 8771 8773 Other:

Corner/Monument: Left as found Established Rebuilt Pre-Construction

Found and tagged Reestablished Referenced Post-Construction

Narrative of corner identified and monument as found, set, reset, replaced, or removed:

See sheet #2 for description(s):

FOUND 5/8" REBAR NOT TAGGED IN MON WELL AT CENTERLINE INTERSECTION OF RIDGE ROAD AND STRAITS VIEW DRIVE AS SHOWN ON RECORD OF SURVEY FILED IN BOOK 2 AT PAGE 160. SET THREE RIVETS & BRASS TAGS STAMPED PLS 8614 AND ONE MAG NAIL & WASHER STAMPED PLS 8614 AS REFERENCE POINTS (SEE PAGE 2). THE PURPOSE OF SETTING REFERENCE BRASS TAGS AND MAG NAIL IS TO PRESERVE THE RECORD LOCATION OF FOUND REBAR PRIOR TO ROADWAY CONSTRUCTION.

SURVEYOR'S STATEMENT

This Corner Record was prepared by me or under my direction in conformance with

the Professional Land Surveyors' Act on 12/19/2023

Signed *Anthony G. Cinquin* (P.L.S.) or R.G.E. No. 8614



COUNTY SURVEYOR'S STATEMENT

This Corner Record was received February 01, 2024

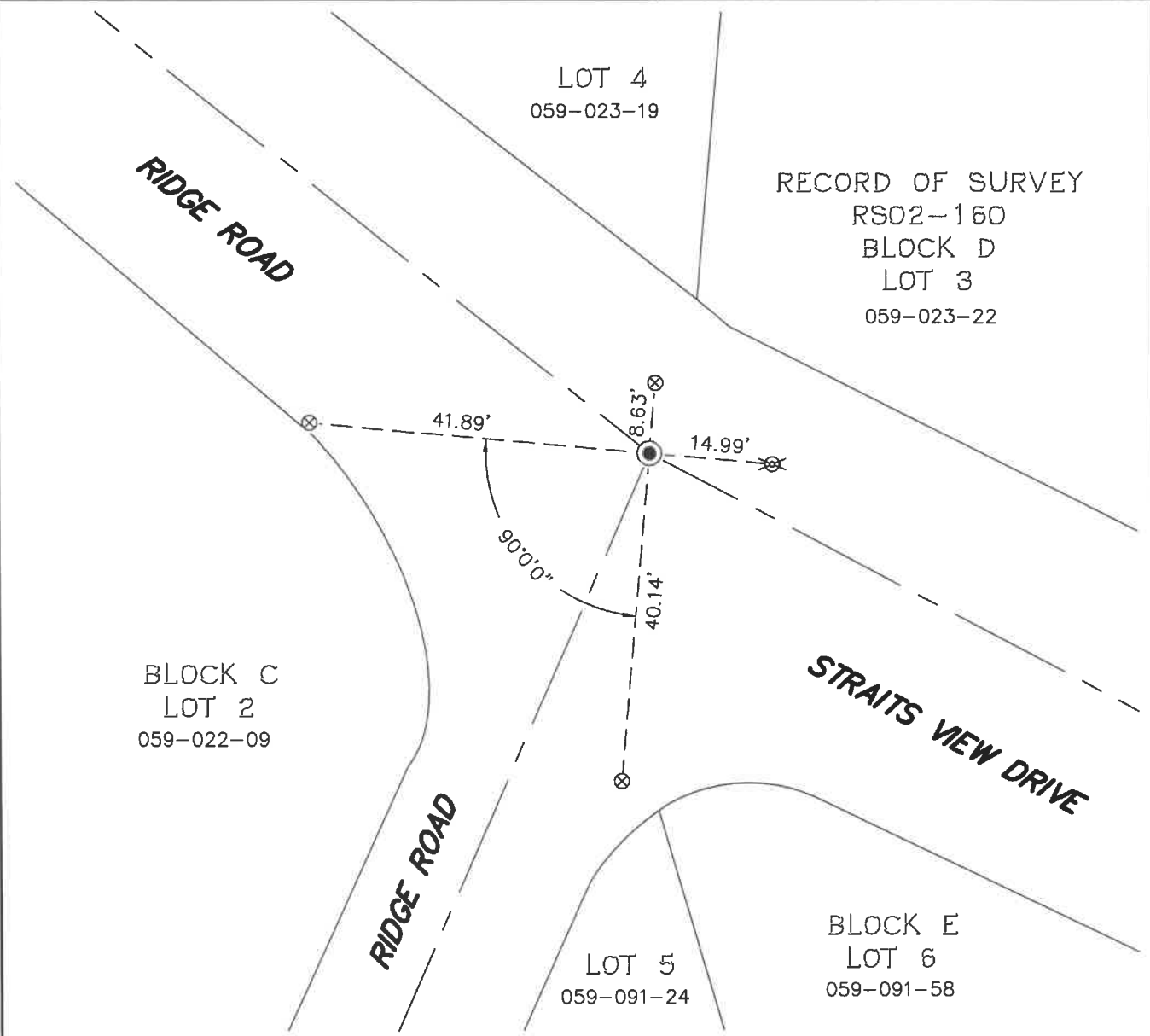
and examined and filed February 05, 2024

Signed *T.W. Park* P.L.S. No. 8176

Title County Surveyor

County Surveyor's Comment



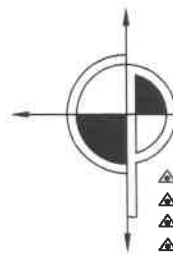
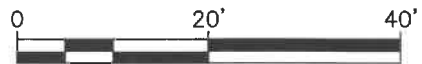


LEGEND

- — — — ROADWAY CENTERLINE
- — — — ADJACENT PROPERTY BOUNDARY
- - - - SURVEY TIE
- ⊙ FOUND 5/8" REBAR NOT TAGGED IN MONUMENT WELL
- ⊗ SET RIVET AND BRASS TAG STAMPED PLS 8614 ON TOP OF CONCRETE CURB
- ⊗ SET MAG NAIL AND WASHER STAMPED PLS 8614 IN AC PAVEMENT

NOTES

ALL DISTANCES AND DIMENSIONS ARE IN FEET AND DECIMALS THEREOF.
 ALL TIES ARE AT RIGHT ANGLES UNLESS OTHERWISE NOTED.
 ALL LINES ARE STRAIGHT-LINE TIES UNLESS OTHERWISE NOTED.



CINQUINI & PASSARINO, INC.
LAND SURVEYING

▲ BOUNDARY
 ▲ TOPOGRAPHIC
 ▲ CONSTRUCTION
 ▲ SUBDIVISIONS

1360 No. Dutton Ave.
 Santa Rosa, Ca. 95401
 Phone: (707) 542-6268
 Fax: (707) 542-2106
 WWW.CINQUINIPASSARINO.COM