

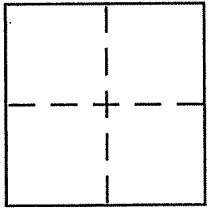
CORNER RECORD

Document Number APN 059-091-55

City of Tiburon

County of Marin, California

Brief Legal Description Parcel 1 of 23 PM 14



CORNER TYPE

Government Corner Control
Meander Property
Rancho Other
Date of Survey 8-27-09

COORDINATES (Optional)

N. _____
E. _____
Zone _____ NAD27 NAD83
NAD83 Epoch _____
Elev. _____
Vert. Datum: NGVD29 NAVD88
Meas. Units: Metric Imperial

Corner - Left as found Found and tagged Established Reestablished Rebuilt

Identification and type of corner found: Evidence used to identify or procedure used to establish or reestablish the corner:
See sheet 2 of 2

A description of the physical condition of the monument as found and as set or reset:
See sheet 2 of 2

SURVEYOR'S STATEMENT

This Corner Record was prepared by me or under my direction in conformance with the Land Surveyor's Act on SEPTEMBER 8 2009
Signed [Signature] P.L.S or R.C.E. No. 6784

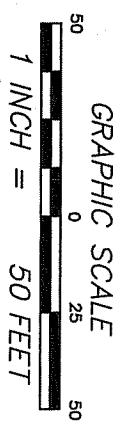
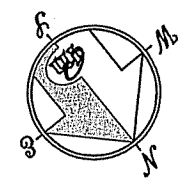
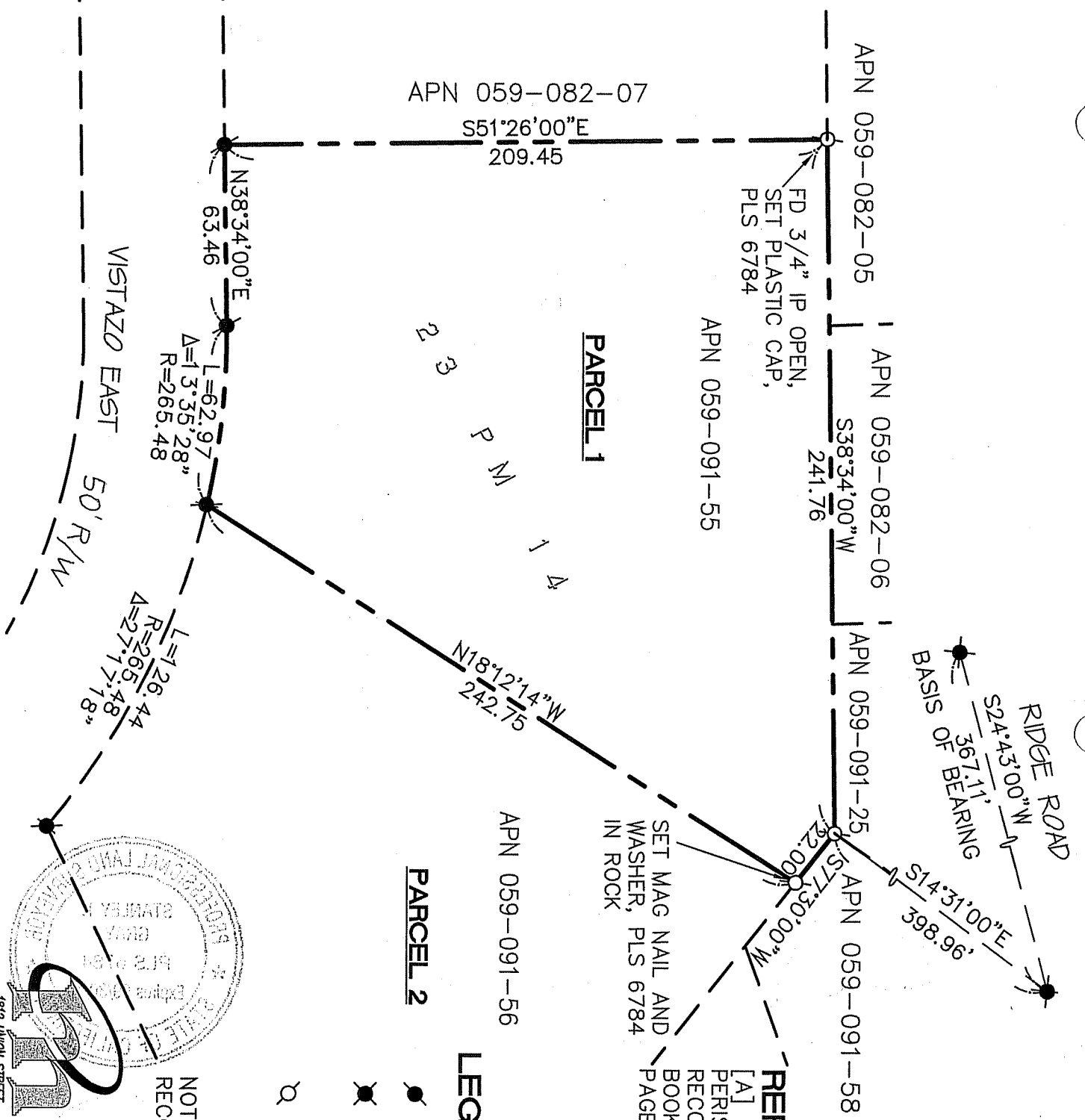


COUNTY SURVEYOR'S STATEMENT

This Corner Record was received OCTOBER 5, 2009
and examined and filed OCTOBER 22, 2009
Signed [Signature] P.L.S or R.C.E. No. 7128
Title COUNTY SURVEYOR



County Surveyor's Comment _____



REFERENCE

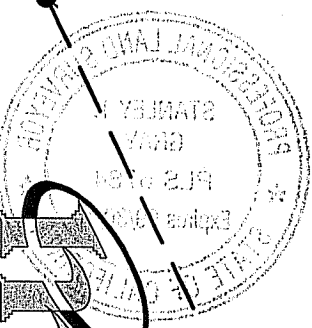
[A] PARCEL MAP, LANDS OF PERISHO AND HARVEY... FILED FOR RECORD FEBRUARY 27, 1986 IN BOOK 23 OF PARCEL MAPS, AT PAGE 14, MARIN COUNTY RECORDS.

LEGEND

- FOUND 3/4" IP AND CAP, LS 2897 PER [A]
- ⊗ FOUND STANDARD STREET MONUMENTS PER [A]
- ⊙ SET 5/8" REBAR WITH CAP, PLS 6784, UNLESS OTHERWISE NOTED

NOTE
RECORD=MEASURED

CORNER RECORD



MERIDIAN SURVEYING ENGINEERING, INC.
 1812 UNION STREET SAN FRANCISCO, CA 94123 (415) 440-4131 info@meridiansurvey.com 09063
 777 GRAND AVENUE, SUITE 202 SAN RAFAEL, CA 94901 (415) 456-6430