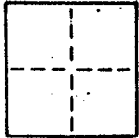


### CORNER RECORD

COUNTY OF \_\_\_\_\_ T. \_\_\_\_\_ R. \_\_\_\_\_ MERIDIAN \_\_\_\_\_ CALIFORNIA \_\_\_\_\_  
 CORNER TYPE: GOV'T. CORNER  MEANDER  RANCHO  CONTROL  OTHER   
 CORNER IDENTIFICATION — DATE OF VISIT \_\_\_\_\_ 19\_\_\_\_



A.P. #59-091-47

CORNER — LEFT AS FOUND  FOUND AND TAGGED  REESTABLISHED OBLITERATED CORNER  REBUILT

PHYSICAL DESCRIPTION OF CORNER FOUND; EVIDENCE AND METHOD USED TO IDENTIFY OR REESTABLISH

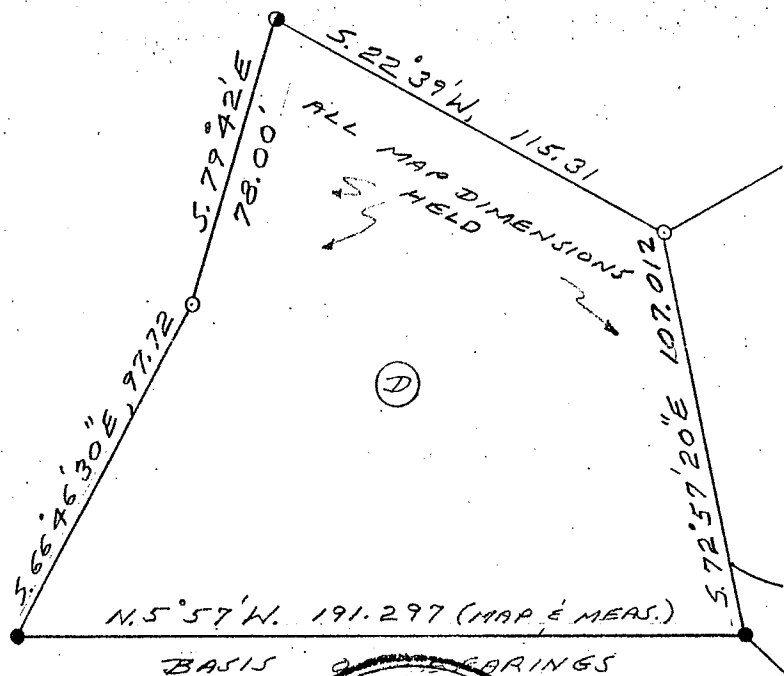
Found 3/4 inch iron pipes on the westerly line of Parcel D as shown in Book 1 of Parcel Maps at Page 76 Marin County Records

PHYSICAL DESCRIPTION OF MONUMENTS, REBUILT OR PERPETUATED

Replace missing corner monuments of Parcel D (1 PM 76) with 3/4 inch iron pipes tagged RCE 8181, or set tag RCE 8181 on rock, as shown on sketch below

CALIFORNIA COORDINATE SYSTEM ORDER: FIRST  SECOND  THIRD   
 STATIONS USED: NGS (USC & GS)  STATE  COUNTY  OTHER  STATION \_\_\_\_\_ STATION \_\_\_\_\_  
 ZONE \_\_\_\_\_ ELEVATION \_\_\_\_\_ NORTHINGS (Y) \_\_\_\_\_ EASTINGS (X) \_\_\_\_\_

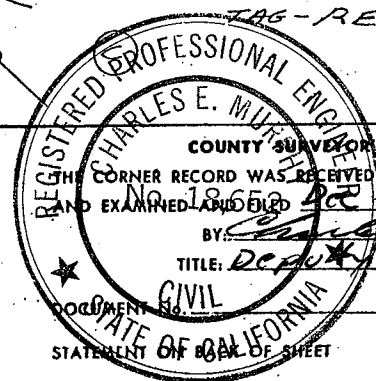
SKETCH: (Include reference tie or witness points, remarks and topo of area)



- RESET 3/4" IRON PIPE TAG-RCE 8181
- RESET TAG-RCE 8181 ON SERPENTINE
- FOUND 3/4" IRON PIPE TAG-RE 5123

THIS CORNER RECORD WAS PREPARED BY ME OR UNDER MY DIRECTION IN CONFORMANCE WITH THE LAND SURVEYORS ACT ON \_\_\_\_\_

SIGNED: \_\_\_\_\_  
 L.S. or R.C.E. No.: \_\_\_\_\_



COUNTY SURVEYORS CERTIFICATE  
 THIS CORNER RECORD WAS RECEIVED DEC 10 1985  
 AND EXAMINED AND FILED DEC 21 1985  
 BY: \_\_\_\_\_  
 TITLE: Deputy County Surveyor

STATEMENT OF WORK OF SHEET

YES  NO