

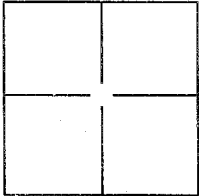
CORNER RECORD

Document Number APN 059-091-08

City of Tiburon

County of Marin, California

Brief Legal Description NE CORNER 3 PM 64



CORNER TYPE

Government Corner Control
 Meander Property
 Rancho Other

Date of Survey November 2014

COORDINATES(Optional)

N. _____
 E. _____
 Zone _____ NAD27 NAD83
 NAD83 Epoch _____
 Elev. _____
 Vert. Datum: NGVD29 NADV88
 Meas. Units: Metric Imperial

Corner - Left as found Found and tagged Established Reestablished Rebuilt

Identification and type of corner found: Evidence used to identify or procedure used to establish or reestablish the corner:

Held record bearing & distance per 3 PM 64*

*See Exhibit on sheet 2

A description of the physical condition of the monument as found and as set or reset:

Set 5/8" rebar & caps PLS 6784 at the NE corner of APN 059-091-08

*See Exhibit on sheet 2

SURVEYOR'S STATEMENT

This Corner Record was prepared by me or under my direction in conformance with the Land Surveyor's Act on 12/2/2014

Signed [Signature] P.L.S. or R.C.E. No.: 6784



COUNTY SURVEYOR'S STATEMENT

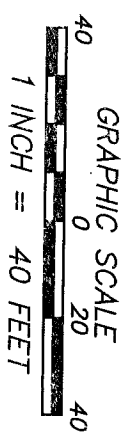
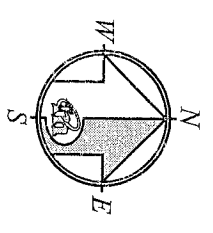
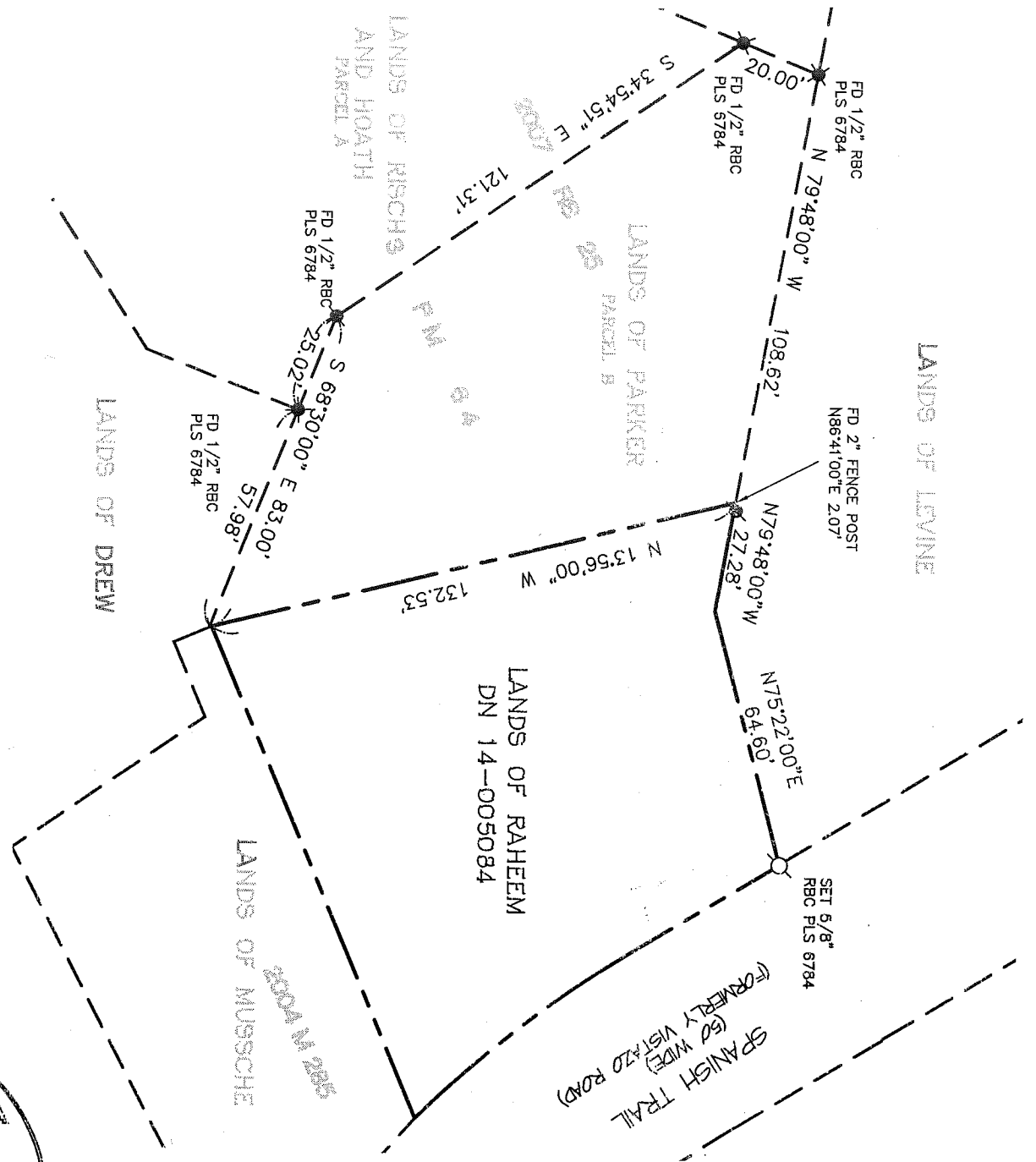
This Corner Record was received FEBRUARY 12, 2015 and examined and filed MARCH 30, 2015

Signed [Signature] P.L.S. or R.C.E. No.: 7821

Title Deputy

County Surveyor's Comment _____





REFERENCES

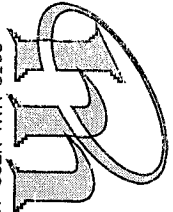
"MAP OF THE DIVISION OF THE LANDS OF NELSON" CALIFORNIA, FILED FOR RECORD JANUARY 7, 1969 IN BOOK 3 OF PARCEL MAPS, AT PAGE 64, MARIN COUNTY RECORDS.

LEGEND

- ⊗ FOUND AS NOTED
- SET 5/8" REBAR WITH CAP, PLS 6784

NOTE:
RECORD=MEASURED.

CORNER RECORD



MERIDIAN SURVEYING
ENGINEERING, INC.

2958 VAN NESS AVENUE 06121 777 GRAND AVENUE, #202
SAN FRANCISCO, CA 94109 SAN RAFAEL, CA 94901
(415) 440-4131 (415) 456-5450

surveyrequest@meridiansurvey.com