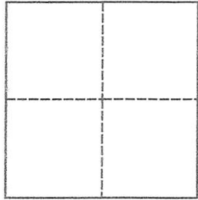


# CORNER RECORD

Agency Index 21-018Document Number 59-082-25aCity of Tiburon County of Marin, CaliforniaBrief Legal Description Parcel One of 2001 PM 162**CORNER TYPE**

Government Corner  Control   
 Meander  Property   
 Rancho  Other

Date of Survey February 13, 2008**COORDINATES (Optional)**

N. \_\_\_\_\_ E. \_\_\_\_\_

Elevation \_\_\_\_\_

Units Metric  U.S. Survey Foot 

Horizontal Datum \_\_\_\_\_

Zone \_\_\_\_\_ Epoch Date \_\_\_\_\_

Vertical Datum \_\_\_\_\_

 Complies with Public Resources Code §§8801-8819 Complies with Public Resources Code §§8890-8902PLS Act Ref.:  8765(d)  8771  8773  Other:

Corner/Monument:  Left as found  Established  Rebuilt  Pre-Construction  
 Found and tagged  Reestablished  Referenced  Post-Construction

Narrative of corner identified and monument as found, set, reset, replaced, or removed:

 See sheet #2 for description(s):

The purpose of this Corner Record is to correct a minor revision to the previous corner record done by this office that was filed March 31, 2008. See reverse side for the particulars of the revision to the Southerly line of Ridge Road as it was depicted upon the previous corner record.

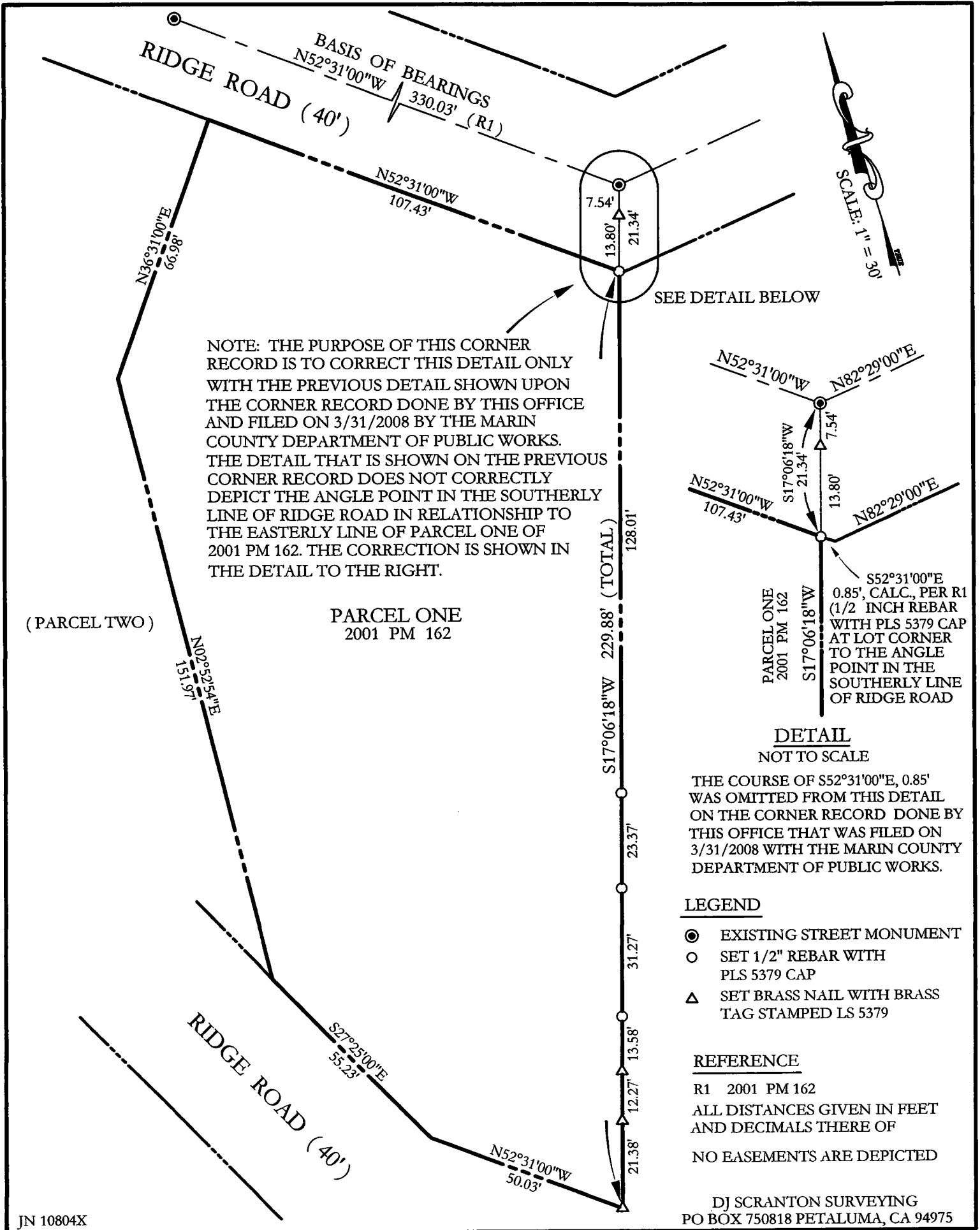
**SURVEYOR'S STATEMENT**

This Corner Record was prepared by me or under my direction in conformance with

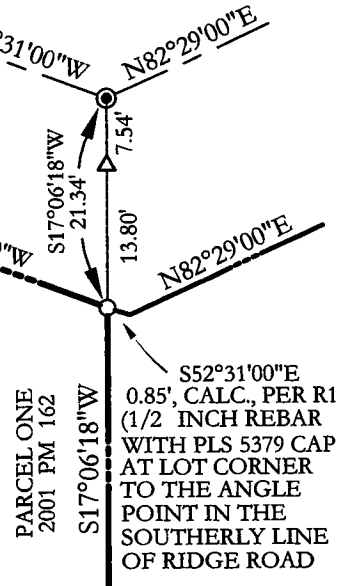
the Professional Land Surveyors' Act on January 27, 2021Signed Douglas J. Scranton P.L.S. or R.C.E. No. 5379**COUNTY SURVEYOR'S STATEMENT**This Corner Record was received 2-4-21and examined and filed 5-12-21Signed J. [Signature] P.L.S. or R.C.E. No. 9292Title DEPUTY

County Surveyor's Comment \_\_\_\_\_





NOTE: THE PURPOSE OF THIS CORNER RECORD IS TO CORRECT THIS DETAIL ONLY WITH THE PREVIOUS DETAIL SHOWN UPON THE CORNER RECORD DONE BY THIS OFFICE AND FILED ON 3/31/2008 BY THE MARIN COUNTY DEPARTMENT OF PUBLIC WORKS. THE DETAIL THAT IS SHOWN ON THE PREVIOUS CORNER RECORD DOES NOT CORRECTLY DEPICT THE ANGLE POINT IN THE SOUTHERLY LINE OF RIDGE ROAD IN RELATIONSHIP TO THE EASTERLY LINE OF PARCEL ONE OF 2001 PM 162. THE CORRECTION IS SHOWN IN THE DETAIL TO THE RIGHT.



**DETAIL**  
NOT TO SCALE

THE COURSE OF S52°31'00"E, 0.85' WAS OMITTED FROM THIS DETAIL ON THE CORNER RECORD DONE BY THIS OFFICE THAT WAS FILED ON 3/31/2008 WITH THE MARIN COUNTY DEPARTMENT OF PUBLIC WORKS.

**LEGEND**

- EXISTING STREET MONUMENT
- SET 1/2" REBAR WITH PLS 5379 CAP
- △ SET BRASS NAIL WITH BRASS TAG STAMPED LS 5379

**REFERENCE**

R1 2001 PM 162  
ALL DISTANCES GIVEN IN FEET AND DECIMALS THERE OF  
NO EASEMENTS ARE DEPICTED