

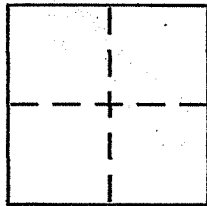
CORNER RECORD

Document Number 059-082-23

City of TIBURON

County of MARIN, California

Brief Legal Description LANDS OF O'DONOVAN SHOWN UPON 2006 M 256



CORNER TYPE

Government Corner Control
Meander Property
Rancho Other
Date of Survey 7/29/2009

COORDINATES (Optional)

N. _____
E. _____
Zone _____ NAD27 NAD83
NAD83 Epoch _____
Elev. _____
Vert. Datum: NGVD29 NAVD88
Meas. Units: Metric Imperial

Corner - Left as found Found and tagged Established Reestablished Rebuilt

Identification and type of corner found: Evidence used to identify or procedure used to establish or reestablish the corner:

SET Miscellaneous line points at random intervals along the southeasterly (southerly) line of the LANDS OF O'DONOVAN as depicted upon 2006 MAPS PAGE 256 (done by this office). See sketch on reverse side for details.

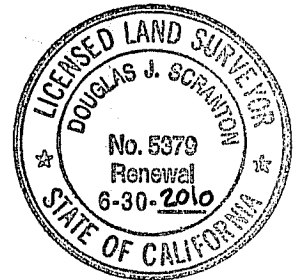
A description of the physical condition of the monument as found and as set or reset:

set 1/2" rebar with plastic cap affixed to top of rebar embossed SKRANTON, PLS 5379. Top of pipe driven flush with surrounding grade.

SURVEYOR'S STATEMENT

This Corner Record was prepared by me or under my direction in conformance with the Land Surveyor's Act on July 6, 2009

Signed [Signature] P.L.S or R.C.E. No. PLS 5379



COUNTY SURVEYOR'S STATEMENT

This Corner Record was received AUGUST 11, 2009

and examined and filed SEPTEMBER 9, 2009

Signed [Signature] P.L.S or R.C.E. No. 7128

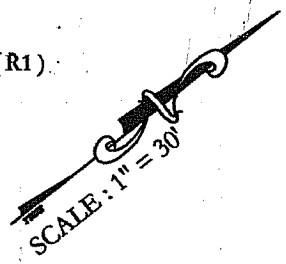
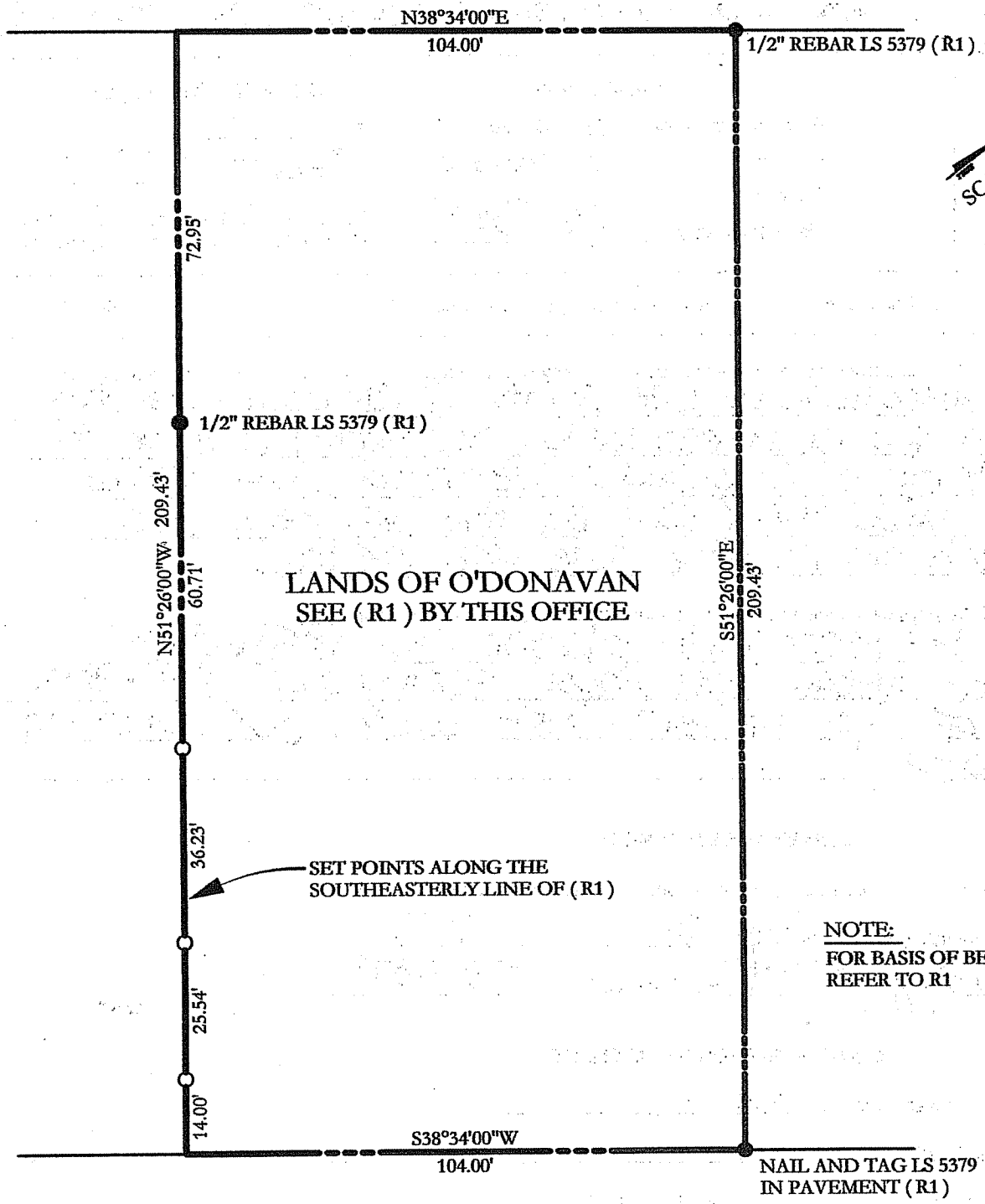
Title COUNTY SURVEYOR

County Surveyor's Comment _____



JN 10606

PREPARED BY: DJ SKRANTON SURVEYING NOVATO, CA



LANDS OF O'DONAVAN
SEE (R1) BY THIS OFFICE

SET POINTS ALONG THE
SOUTHEASTERLY LINE OF (R1)

NOTE:
FOR BASIS OF BEARINGS
REFER TO R1

VISTAZO EAST (50')

LEGEND

- FOUND MONUMENTATION OF R1
- SET 1/2" REBAR WITH PLS CAP 5379
- R1 2006 MAPS 256

ALL DISTANCES GIVEN IN FEET
AND DECIMALS THEREOF.