

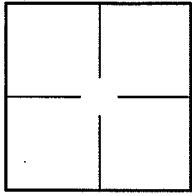
CORNER RECORD

Document Number A.P.# 059-082-21

City of TIBURON

County of MARIN, California

Brief Legal Description 35 O.S. 68



CORNER TYPE

COORDINATES (Optional)

Government Corner  Control

Meander  Property

Rancho  Other

Date of Survey 01/29/13

N. \_\_\_\_\_  
 E. \_\_\_\_\_  
 Zone \_\_\_\_\_ NAD27  NAD83   
 NAD83 Epoch \_\_\_\_\_  
 Elev. \_\_\_\_\_  
 Vert. Datum: NGVD29  NAVD88   
 Meas. Units: Metric  Imperial

Corner- Left as found  Found and tagged  Established  Reestablished  Rebuilt

Identification and type of corner found: Evidence used to identify or procedure used to establish or reestablish the corner:  
REESTABLISHED 4 CORNERS AND REAR LINE OF "LANDS OF HANNAHS" AS SHOWN ON 35 O.S. 68  
BASED UPON FOUND STREET MONUMENTS PER 35 O.S. 68 AS SHOWN ON SHEET 2

A description of the physical condition of the monument as found and as set or reset: SEE SHEET 2.

SURVEYOR'S STATEMENT

This Corner Record was prepared by me or under my direction in conformance with  
 the Land Surveyor's Act on JANUARY 30 2013  
 Signed Lawrence P. Doyle P.L.S. or R.C.E. No. P.L.S. 4694

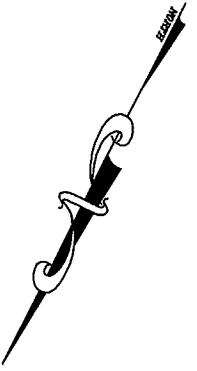


COUNTY SURVEYOR'S STATEMENT

This Corner Record was received MARCH 4, 2013  
 and examined and filed APRIL 17, 2013  
 Signed Richard G. Simonitch P.L.S. or R.C.E. No. 7821  
 Title DEPUTY

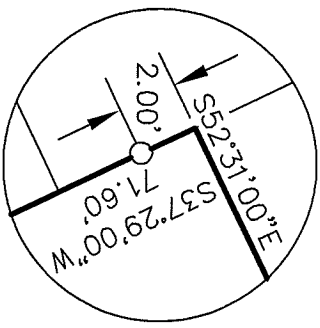
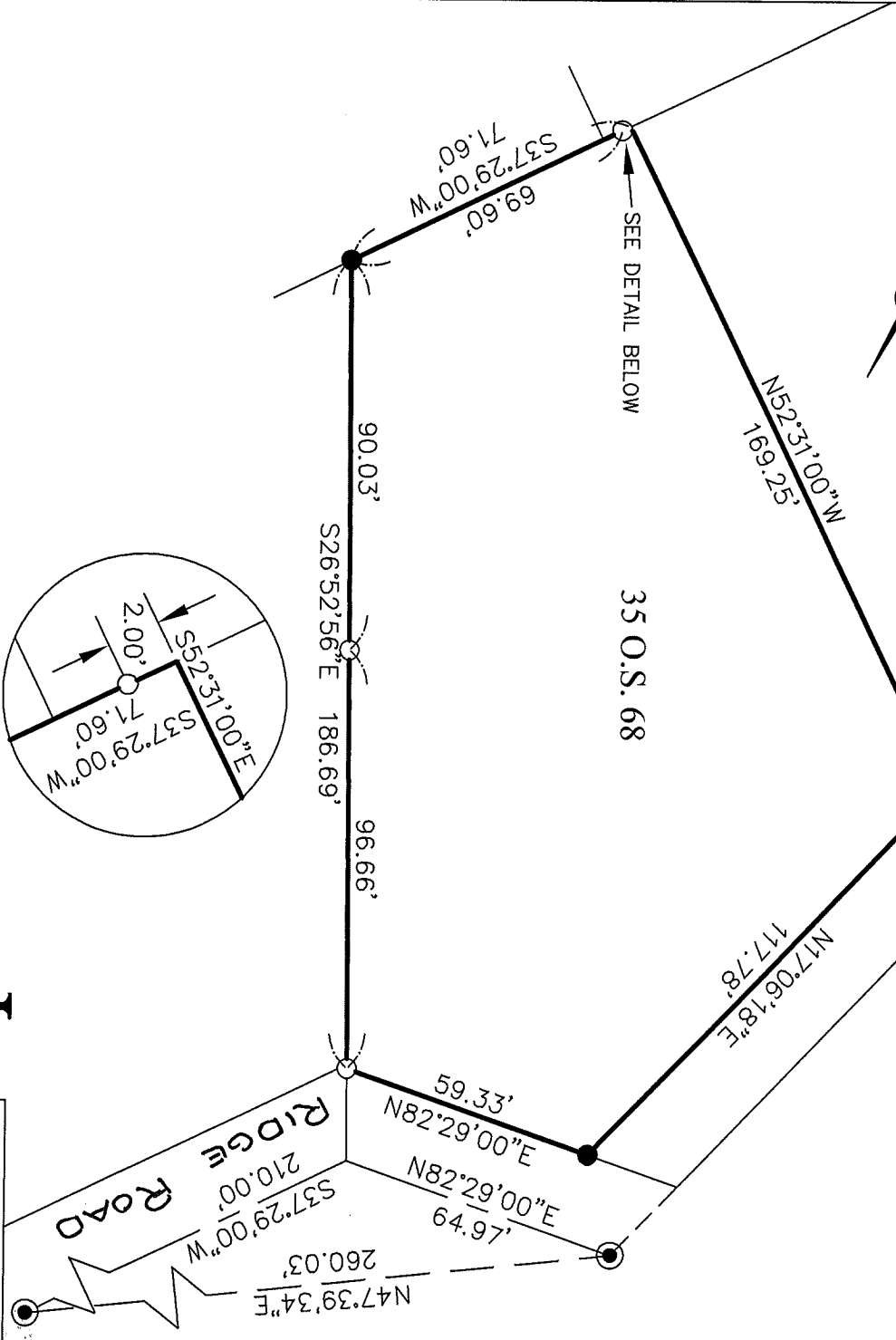


County Surveyor's Comment \_\_\_\_\_



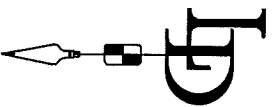
SET NAIL IN CONCRETE  
FENCE FOOTING

**BASIS OF BEARING**  
THE BASIS OF BEARING FOR THIS SURVEY  
IS BETWEEN FOUND MONUMENTS PER 35 O.S. 68



**DETAIL**  
NOT TO SCALE

- LEGEND**
- FOUND STREET MONUMENT
  - FOUND REBAR & CAP, L.S. 5767
  - SET 3/4" PIPE & PLUG, L.S. 4694
  - SET NAIL & TAG, L.S. 4694



<b>CORNER RECORD</b>	
35 O.S. 68	
TIBURON	MARIN COUNTY
CALIFORNIA	
<b>LAWRENCE P. DOYLE</b>	
LAND SURVEYOR/CIVIL ENGINEER	
100 HELENS LANE MILL VALLEY CA 94941 (415-388-9585)	
SCALE: 1" = 40'	DRAWN BY:
DATE: 01/29/13	SHEET 1 OF 1
DRAWING NO. 2164-CR	