

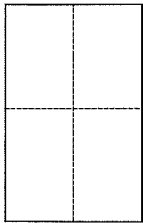
CORNER RECORD

Document Number 059-082-06

City of Tiburon

County of Marin, California

Brief Legal Description APN 059-082-06, being a portion of Lot 4, Block "E", as shown on Map of "Hill Haven" filed in Book 2 of Maps, at Page 160, M.C.R.



CORNER TYPE

Government Corner Control
Meaneder Property
Rancho Other
Date of Survey 5/20/14

COORDINATES (Optional)

N. _____
E. _____
Zone _____ NAD27 NAD83
NAD83 Epoch _____
Elev. _____
Vert. Datum: NGVD29 NAVD88
Meas. Units: Metric Imperial

Corner - Left as found Found and tagged Established Reestablished Rebuilt

Identification and type of corner found: Evidence used to identify or procedure used to establish or reestablish the corner:
Standard Street Monuments per Record of Survey filed in Book 37 of maps,
at page 8, were found to be in record position and used to reestablish
the location of the most westerly property corner of Lot 5, Block "E",
of "Hill Haven".

A description of the physical condition of the monument as found and as set or reset: _____
Set 1/2" iron pipe tagged LS 7237.

SURVEYOR'S STATEMENT

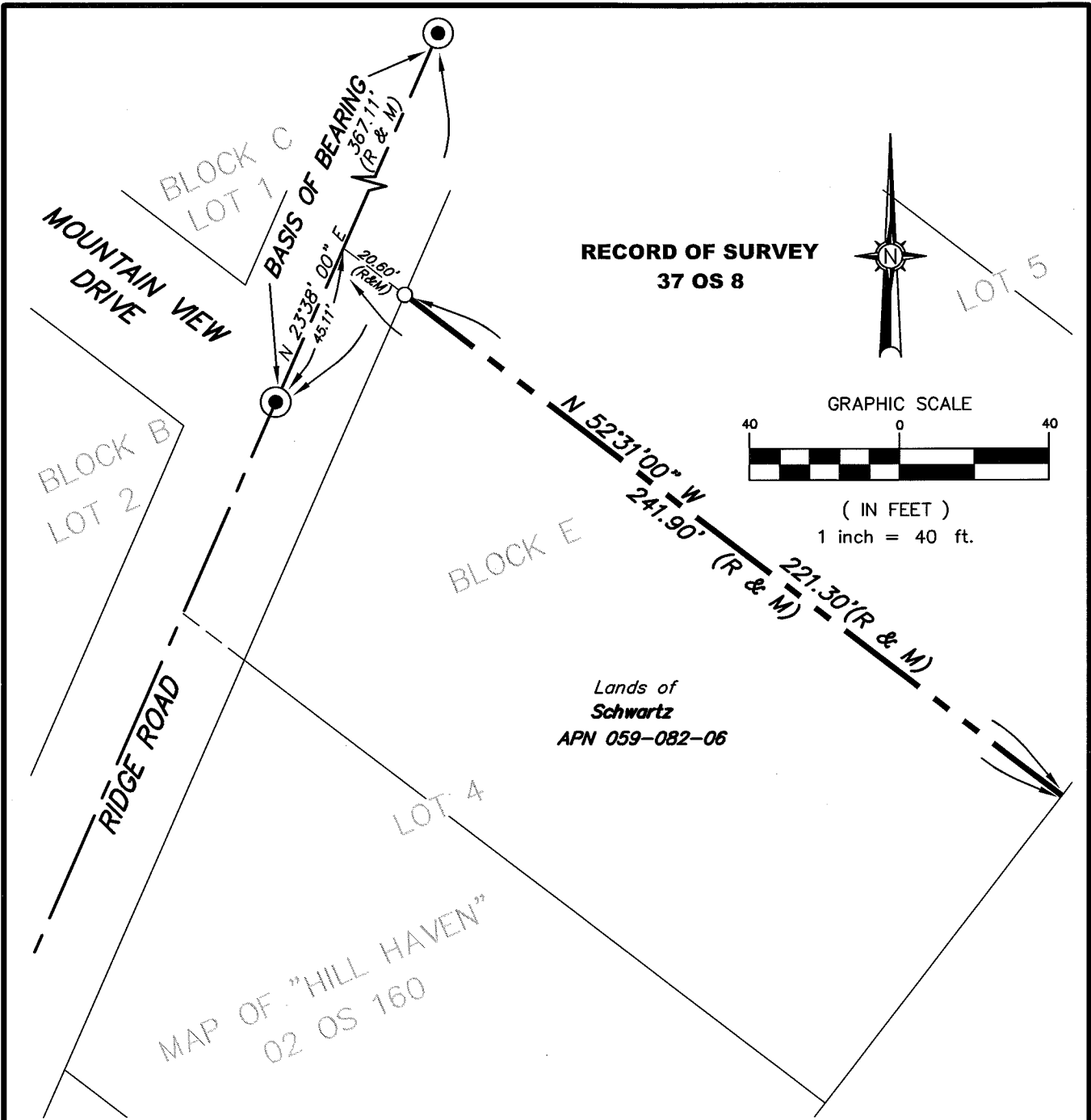
This Corner Record was prepared by me or under my direction in conformance with
the Land Surveyor's Act on MAY 29, 2014
Signed Michael E. Ford P.L.S. or R.C.E. No. 7237



COUNTY SURVEYOR'S STATEMENT

This Corner Record was received JUNE 16, 2014
and examined and filed JUNE 25, 2014
Signed Robert Dint P.L.S. or R.C.E. No. 7821
Title DEPUTY

County Surveyor's Comment



LEGEND

- STANDARD STREET MONUMENT
- SET 1/2" IRON PIPE, LS 7237
- R RECORD OF SURVEY BOOK 37 OF MAPS, AT PAGE 8
- M MEASURED

BASIS OF BEARINGS

S 23°38'00" W BETWEEN FOUND STANDARD STREET MONUMENTS AS SHOWN ON RECORD OF SURVEY FILED IN BOOK 37 OF MAPS, AT PAGE 8, MARIN COUNTY RECORDS.



2300 bethards drive, suite J
santa rosa, california 95405
p 707.542.8513 - f 707.542.1825
www.michaelfordinc.com