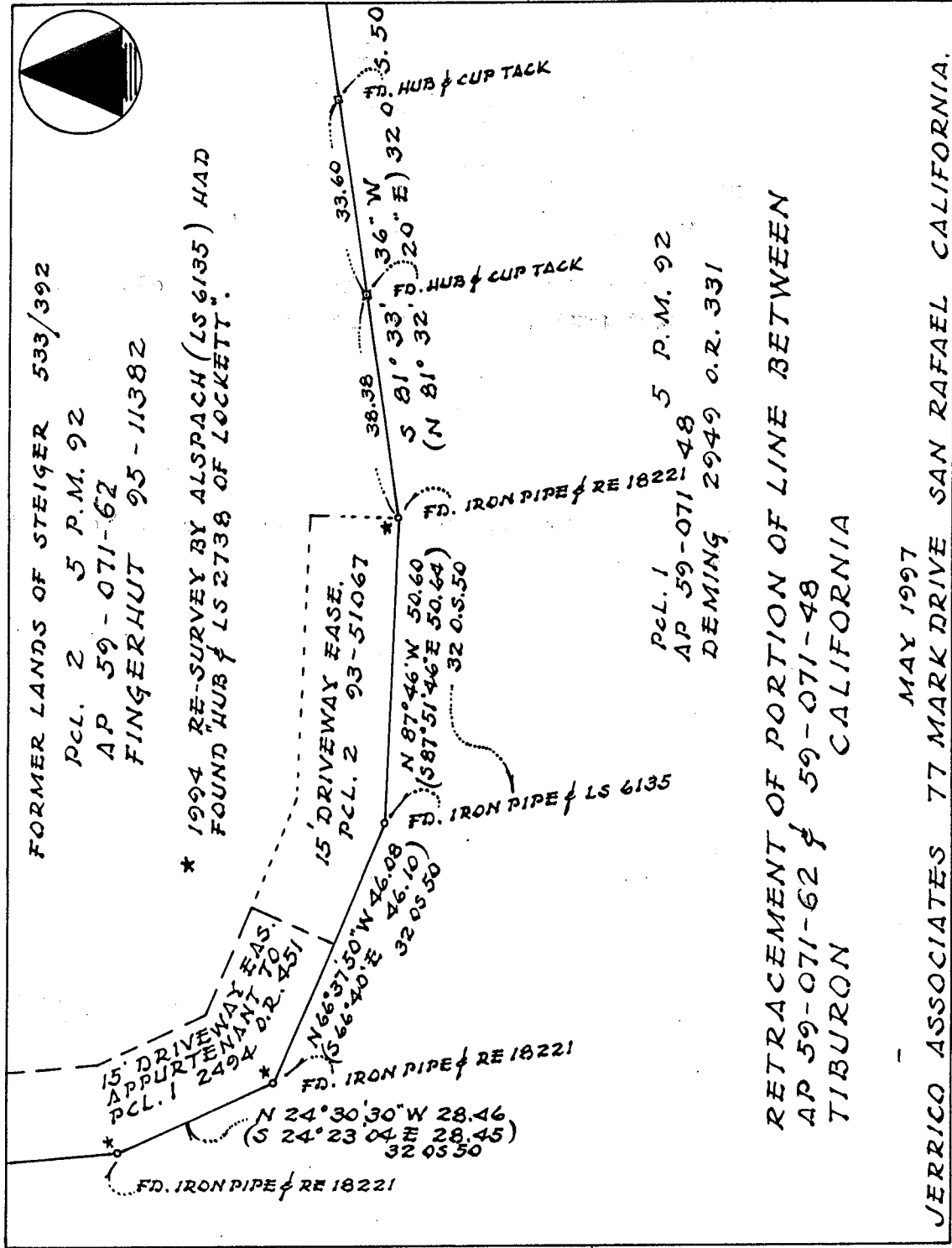


FORMER LANDS OF STEIGER 533/392
 PCL. 2 5 P.M. 92
 AP 59-071-62
 FINGERHUT 95-11382

* 1994 RE-SURVEY BY ALSPACH (LS 6135) HAD
 FOUND "HUB & CUP TACK"
 FOUND "HUB & CUP TACK"



PCL. 1 5 P.M. 92
 AP 59-071-48
 DEMING 2949 O.R. 331

RETRACEMENT OF PORTION OF LINE BETWEEN
 AP 59-071-62 & 59-071-48
 TIBURON CALIFORNIA

MAY 1997
 JERRICO ASSOCIATES 77 MARK DRIVE SAN RAFAEL CALIFORNIA.

S-7256