

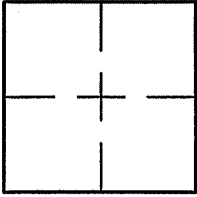
CORNER RECORD

Document Number A.P. 059-052-06

City of TIBURON

County of MARIN, California

Brief Legal Description LANDS OF ATCHLEY AS SHOWN ON BOTH 21 O.S. 66 AND 1998 M 10.



CORNER TYPE COORDINATES (Optional)

Government Corner Control

Meander Property

Rancho Other

Date of Survey 3/27/08

N. _____
 E. _____
 Zone _____ NAD27 NAD83
 NAD83 Epoch _____
 Elev. _____
 Vert. Datum: NGVD29 NAVD88
 Meas. Units: Metric Imperial

Corner- Left as found Found and tagged Established Reestablished Rebuilt

Identification and type of corner found: Evidence used to identify or procedure used to establish or reestablish the corner:
REESTABLISHED THE PORTION OF 21 O.S. 66 AND 1998 M 10 DESCRIBED AS "LANDS OF ATCHLEY"
BY USING FOUND POINTS PER 1998 M 10 AND AS SHOWN ON SHEET 2.

A description of the physical condition of the monument as found and as set or reset: SEE SHEET 2.

SURVEYOR'S STATEMENT

This Corner Record was prepared by me or under my direction in conformance with

the Land Surveyor's Act on MARCH 31, 2008

Signed Lawrence P. Doyle P.L.S. or R.C.E. No. P.L.S. 4694



COUNTY SURVEYOR'S STATEMENT

This Corner Record was received APRIL 14, 2008

and examined and filed MAY 8, 2008

Signed [Signature] P.L.S. or R.C.E. No. 7128

Title COUNTY SURVEYOR



County Surveyor's Comment _____

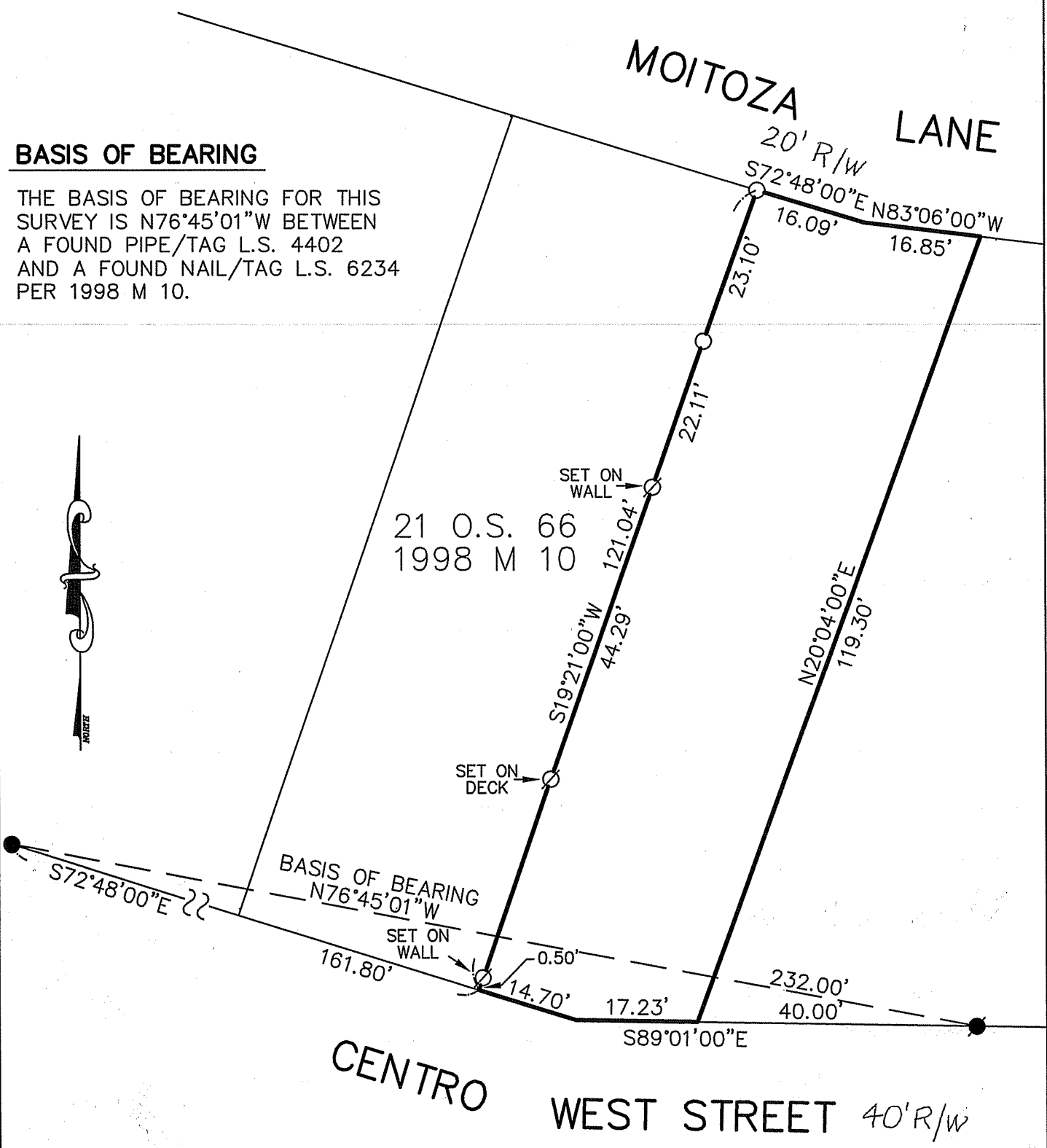
MOITOZA LANE

BASIS OF BEARING

THE BASIS OF BEARING FOR THIS SURVEY IS N76°45'01"W BETWEEN A FOUND PIPE/TAG L.S. 4402 AND A FOUND NAIL/TAG L.S. 6234 PER 1998 M 10.



21 O.S. 66
1998 M 10



CENTRO WEST STREET 40' R/W

LEGEND

- FOUND NAIL/TAG L.S. 6234 PER 1998 M 10
- FOUND 1-1/2" PIPE/TAG L.S. 4402 PER 16 O.S. 63
- SET 3/4" PIPE/PLUG L.S. 4694
- ∅ SET NAIL/TAG L.S. 4694



CORNER RECORD	
21 O.S. 66 / 1998 M 10	
TIBURON	MARIN COUNTY CALIFORNIA
SCALE: 1" = 20'	DRAWN BY:
DATE: 3/31/08	LAWRENCE P. DOYLE
LAND SURVEYOR/CIVIL ENGINEER	
100 HELENS LANE MILL VALLEY CA 94942 (415-388-9585)	
DRAWING NO. 1767-08	