

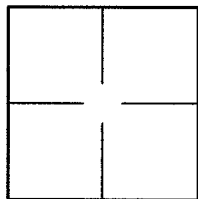
CORNER RECORD

Document Number A.P.# 059-042-09

City of TIBURON

County of MARIN, California

Brief Legal Description 2003 M. 41



CORNER TYPE COORDINATES (Optional)

Government Corner Control
Meander Property
Rancho Other
Date of Survey 01/16/13

N. _____
E. _____
Zone _____ NAD27 NAD83
NAD83 Epoch _____
Elev. _____
Vert. Datum: NGVD29 NAVD88
Meas. Units: Metric Imperial

Corner- Left as found Found and tagged Established Reestablished Rebuilt

Identification and type of corner found: Evidence used to identify or procedure used to establish or reestablish the corner:
ESTABLISHED THE NORTHWESTERLY LINE OF A.P. 59-042-09 AS SHOWN ON 2003 M 41. FOUND A
PIPE/TAG L.S. 2731 AT THE INTERSECTION OF SAID NORTHWESTERLY LINE AND THE EASTERLY LINE
OF LAGOON VIEW DRIVE AS SHOWN ON 2003 M 41. SEE SHEET 2.

A description of the physical condition of the monument as found and as set or reset: SEE SHEET 2.

SURVEYOR'S STATEMENT

This Corner Record was prepared by me or under my direction in conformance with
the Land Surveyor's Act on JANUARY 16 2013
Signed Lawrence P Doyle P.L.S. or R.C.E. No. P.L.S. 4694



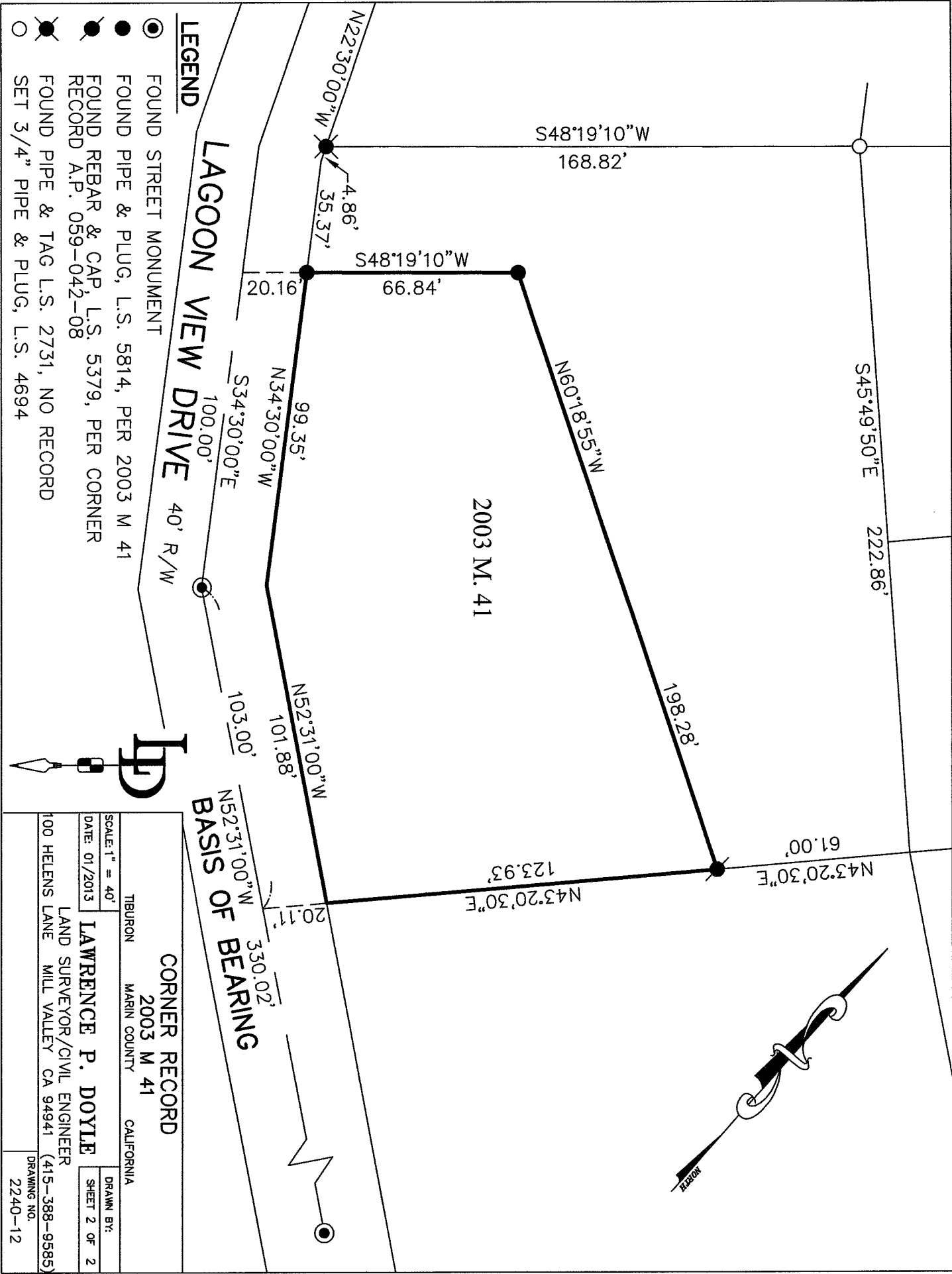
COUNTY SURVEYOR'S STATEMENT

This Corner Record was received JANUARY 23, 2013
and examined and filed MARCH 11, 2013
Signed Richard G Simonitch P.L.S. or R.C.E. No. 7821



Title DEPUTY COUNTY SURVEYOR

County Surveyor's Comment _____



LEGEND

- FOUND STREET MONUMENT
- FOUND PIPE & PLUG, L.S. 5814, PER 2003 M 41
- FOUND REBAR & CAP, L.S. 5379, PER CORNER RECORD A.P. 059-042-08
- ⊗ FOUND PIPE & TAG L.S. 2731, NO RECORD
- SET 3/4" PIPE & PLUG, L.S. 4694



BASIS OF BEARING

SCALE: 1" = 40'	
DATE: 01/2013	
TIBURON MARIN COUNTY CALIFORNIA	
CORNER RECORD	
2003 M 41	
LAWRENCE P. DOYLE	
LAND SURVEYOR/CIVIL ENGINEER	
100 HELENS LANE MILL VALLEY CA 94941 (415-388-9585)	
DRAWN BY:	SHEET 2 OF 2
DRAWING NO. 2240-12	