

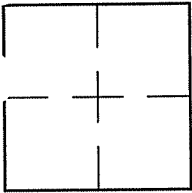
CORNER RECORD

Document Number A.P.# 059-032-26

City of TIBURON

County of MARIN, California

Brief Legal Description LOT 4 PER 19 R.M. 53



CORNER TYPE		COORDINATES (Optional)	
Government Corner	<input type="checkbox"/>	Control	<input type="checkbox"/>
Meander	<input type="checkbox"/>	Property	<input checked="" type="checkbox"/>
Rancho	<input type="checkbox"/>	Other	<input type="checkbox"/>
Date of Survey <u>04/12/05</u>			

N. \_\_\_\_\_  
 E. \_\_\_\_\_  
 Zone \_\_\_\_\_ NAD27  NAD83   
 NAD83 Epoch \_\_\_\_\_  
 Elev. \_\_\_\_\_  
 Vert. Datum: NGVD29  NAVD88   
 Meas. Units: Metric  Imperial

Corner- Left as found  Found and tagged  Established  Reestablished  Rebuilt

Identification and type of corner found: Evidence used to identify or procedure used to establish or reestablish the corner:

REESTABLISHED THE PROPERTY LINE FROM SURVEY MONUMENTS AS SHOWN UPON 19 R.M. 53

SEE SHEET 2.

A description of the physical condition of the monument as found and as set or reset: SEE SHEET 2.

SURVEYOR'S STATEMENT

This Corner Record was prepared by me or under my direction in conformance with

the Land Surveyor's Act on APRIL 12 2005

Signed Lawrence P. Doyle P.L.S. or R.C.E. No. P.L.S. 4694



COUNTY SURVEYOR'S STATEMENT

This Corner Record was received 5-11-2005

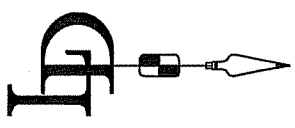
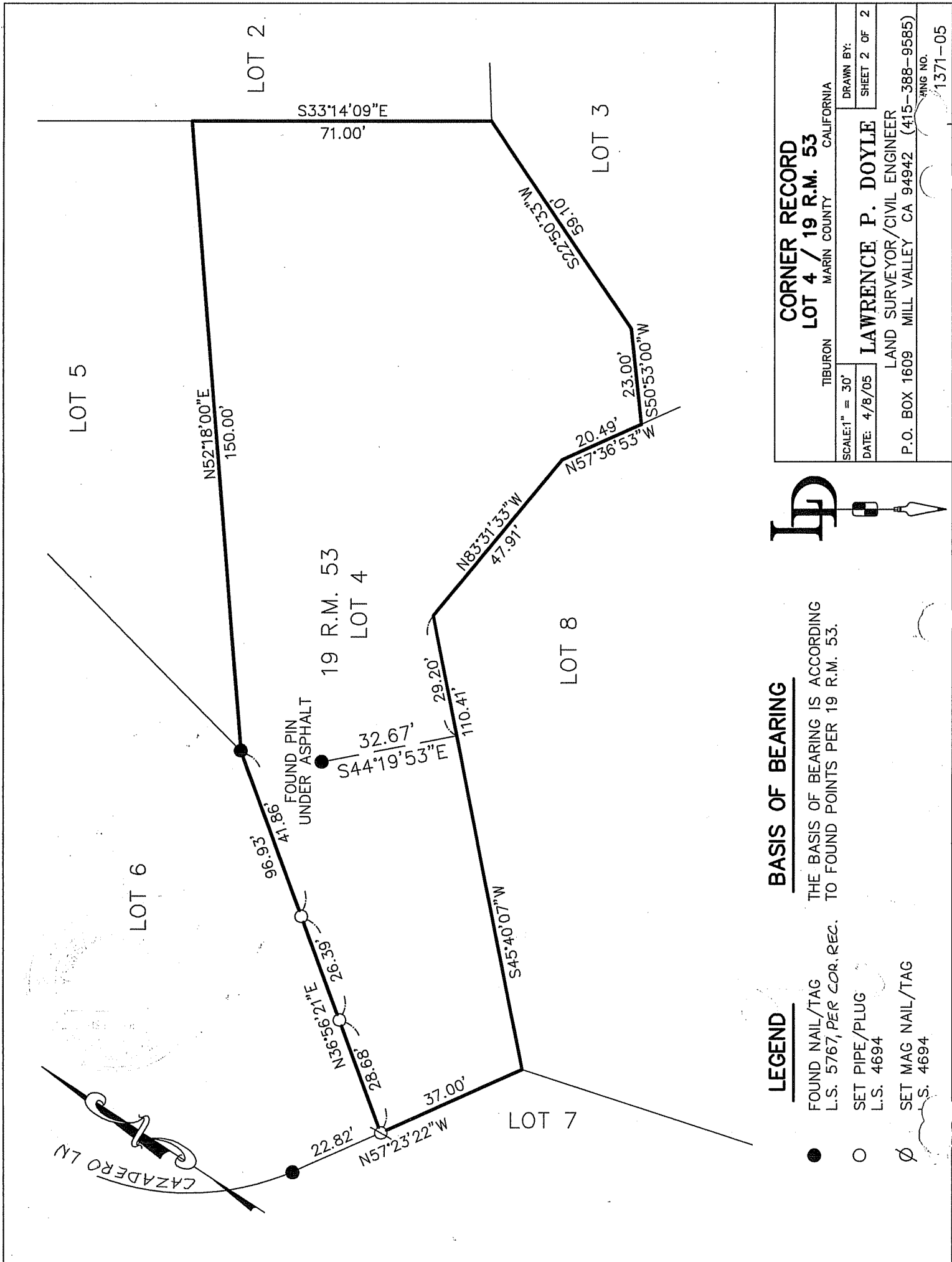
and examined and filed 6-29-2005

Signed Craig Tackabery P.L.S. or R.C.E. No. 7128



Title CO. SURV.

County Surveyor's Comment \_\_\_\_\_



**BASIS OF BEARING**

THE BASIS OF BEARING IS ACCORDING TO FOUND POINTS PER 19 R.M. 53.

**LEGEND**

- FOUND NAIL/TAG  
L.S. 5767, PER COR. REC.
- SET PIPE/PLUG  
L.S. 4694
- ∅ SET MAG NAIL/TAG  
L.S. 4694

**CORNER RECORD**  
**LOT 4 / 19 R.M. 53**  
MARIN COUNTY CALIFORNIA

TIBURON  
**LAWRENCE P. DOYLE**  
LAND SURVEYOR/CIVIL ENGINEER  
P.O. BOX 1609 MILL VALLEY CA 94942 (415-388-9585)

SCALE: 1" = 30'  
DATE: 4/8/05

DRAWN BY:  
SHEET 2 OF 2

PLANNING NO.  
1371-05