

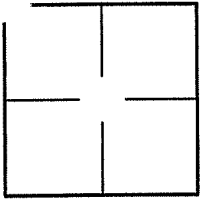
CORNER RECORD

Document Number A.P. 59-032-24

City of TIBURON

County of MARIN, California

Brief Legal Description LOT 2 PER 19 R.M. 53



CORNER TYPE

COORDINATES (Optional)

Government Corner Control

Meander Property

Rancho Other

Date of Survey 5/12/08

N. _____
 E. _____
 Zone _____ NAD27 NAD83
 NAD83 Epoch _____
 Elev. _____
 Vert. Datum: NGVD29 NAVD88
 Meas. Units: Metric Imperial

Corner- Left as found Found and tagged Established Reestablished Rebuilt

Identification and type of corner found: Evidence used to identify or procedure used to establish or reestablish the corner:
REESTABLISHED LOT 2 PER 19 R.M. 53 BY USING FOUND POINTS PER 19 R.M. 53 AND AS SHOWN ON SHEET 2.

A description of the physical condition of the monument as found and as set or reset: SEE SHEET 2.

SURVEYOR'S STATEMENT

This Corner Record was prepared by me or under my direction in conformance with

the Land Surveyor's Act on MAY 15, 2008

Signed Lawrence P Doyle P.L.S. or R.C.E. No. P.L.S. 4694



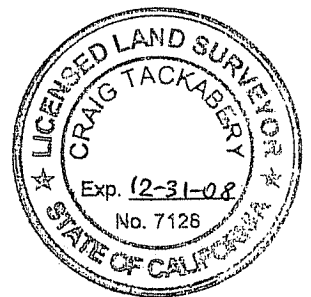
COUNTY SURVEYOR'S STATEMENT

This Corner Record was received JUNE 5, 2008

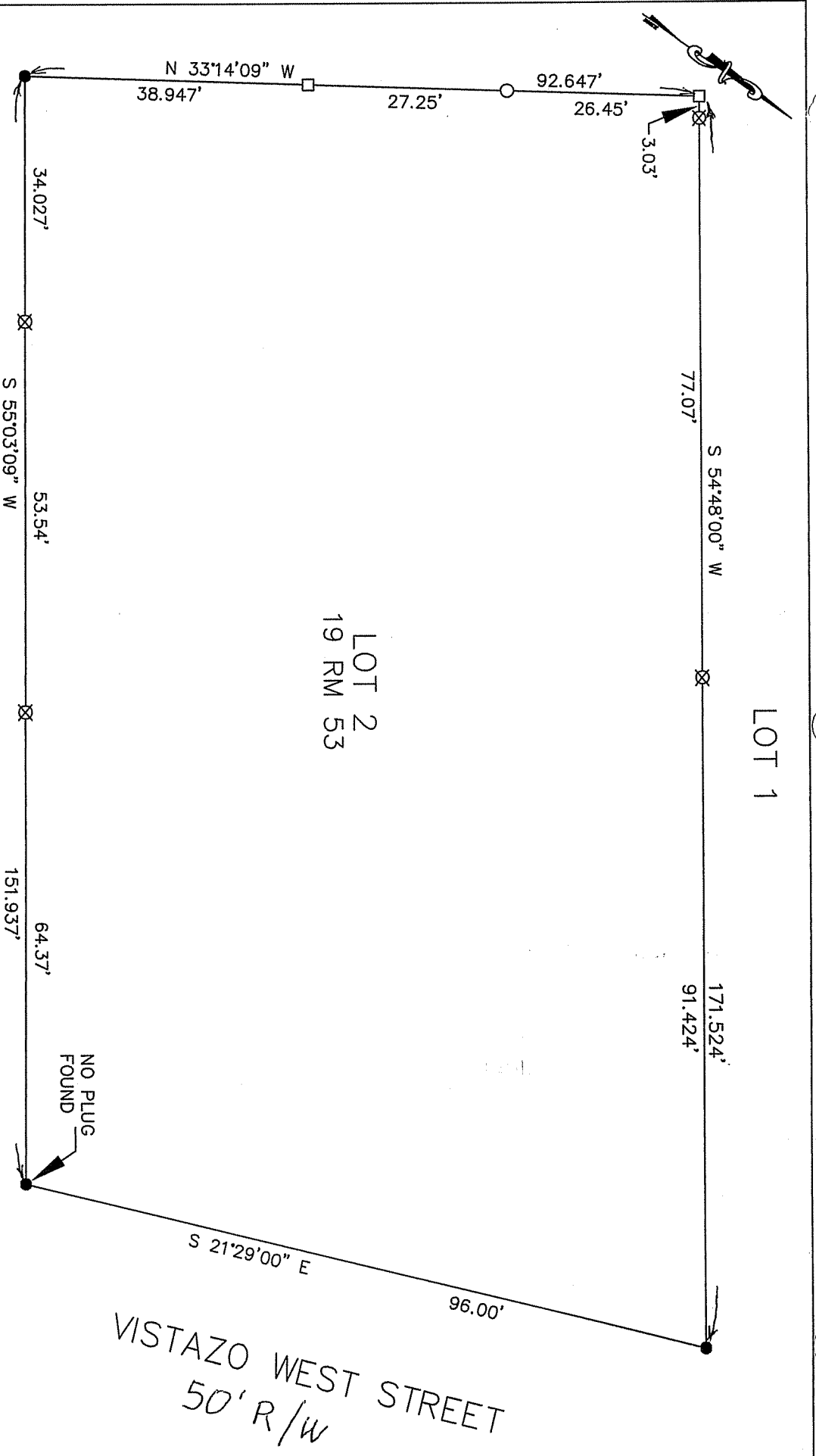
and examined and filed JUNE 26, 2008

Signed [Signature] P.L.S. or R.C.E. No. 7128

Title COUNTY SURVEYOR



County Surveyor's Comment _____



- FD 3/4" PIPE & PLUG L.S. 3971
- SET 1/2" REBAR & CAP L.S. 4694
- SET PIPE AND PLUG L.S. 4694
- SET HUB AND TAG L.S. 4694

LEGEND

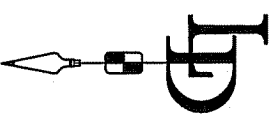
BASIS OF BEARING
 THE BASIS OF BEARING IS BETWEEN FOUND POINTS PER 19 R.M. 53.

LOT 3

LOT 2
 19 RM 53

LOT 1

VISTAZO WEST STREET
 50' R/W



CORNER RECORD	
LOT 2 / 19 R.M. 53	
TIBURON MARIN COUNTY CALIFORNIA	
SCALE: 1" = 20'	DRAWN BY:
DATE: 5/13/08	SHEET 2 OF 2
LAWRENCE P. DOYLE	
LAND SURVEYOR/CIVIL ENGINEER	
100 HELENS LANE MILL VALLEY CA 94941 (415-388-9585)	
	DRAWING NO. 438