

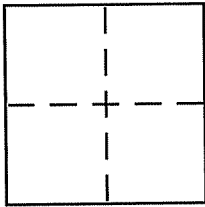
CORNER RECORD

Document Number APN: 059-023-18

City of TIBURON

County of MARIN, California

Brief Legal Description PARCEL A AS PER MARIN COUNTY PARCEL MAP, BK 14 PG 65



CORNER TYPE

Government Corner Control
Meander Property
Rancho Other
Date of Survey 6-20-2005

COORDINATES (Optional)

N. _____
E. _____
Zone _____ NAD27 NAD83
NAD83 Epoch _____
Elev. _____
Vert. Datum: NGVD29 NAVD88
Meas. Units: Metric Imperial

Corner - Left as found Found and tagged Established Reestablished Rebuilt

Identification and type of corner found: Evidence used to identify or procedure used to establish or reestablish the corner:

FOUND WELL MONUMENT: 1/2" REBAR WITH CAP (R.C.E. 11181)
ALONG RIDGE ROAD AS SHOWN ON MARIN COUNTY PARCEL
MAP BOOK 14 PG 65.

A description of the physical condition of the monument as found and as set or reset: ALL MONUMENTS
FOUND SHOWED NO SIGNS OF BEING DISTURBED. 1/2" IRON
PIPES WITH CAP, TAGGED L.S. 7362 HAVE BEEN SET TO REPLACE
MISSING MONUMENTS AS SHOWN ON ATTACHED MAP.

SURVEYOR'S STATEMENT

This Corner Record was prepared by me or under my direction in conformance with the Land Surveyor's Act on JANUARY 27TH 2006.

Signed [Signature] P.L.S or R.C.E. No. PLS7362



COUNTY SURVEYOR'S STATEMENT

This Corner Record was received FEBRUARY 6, 2006

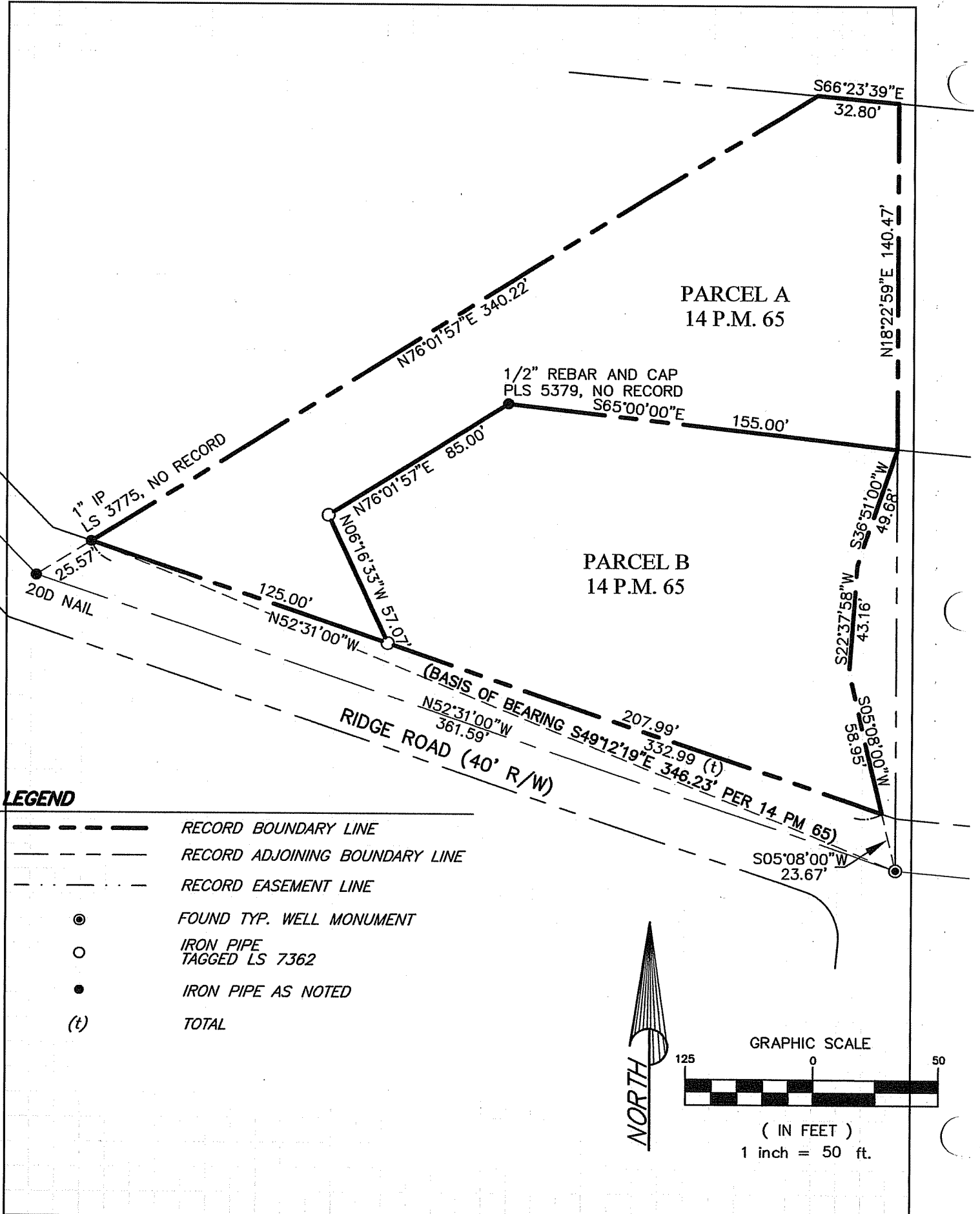
and examined and filed FEBRUARY 7, 2006

Signed [Signature] P.L.S or R.C.E. No. 7128

Title COUNTY SURVEYOR



County Surveyor's Comment _____



S66°23'39"E
32.80'

PARCEL A
14 P.M. 65

1/2" REBAR AND CAP
PLS 5379, NO RECORD
S65°00'00"E

PARCEL B
14 P.M. 65

1" IP
LS 3775, NO RECORD
25.57'
20D NAIL

125.00'
N52°31'00"W

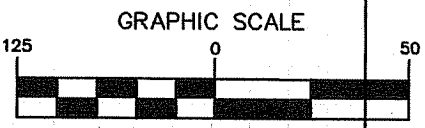
(BASIS OF BEARING
N52°31'00"W
361.59'
RIDGE ROAD (40' R/W)

207.99'
S49°12'19"E
332.99 (t)
346.23' PER 14 PM 65)

S05°08'00"W
23.67'

LEGEND

- RECORD BOUNDARY LINE
- - - RECORD ADJOINING BOUNDARY LINE
- · - · RECORD EASEMENT LINE
- ⊙ FOUND TYP. WELL MONUMENT
- IRON PIPE TAGGED LS 7362
- IRON PIPE AS NOTED
- (t) TOTAL



(IN FEET)
1 inch = 50 ft.