

1071

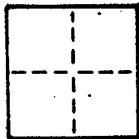
# CORNER RECORD

COUNTY OF \_\_\_\_\_ T. \_\_\_\_\_ R. \_\_\_\_\_ MERIDIAN CALIFORNIA

CORNER TYPE: GOVT. CORNER  MEANDER  RANCHO  CONTROL  OTHER

CORNER IDENTIFICATION — DATE OF VISIT \_\_\_\_\_ 19\_\_\_\_

CORNER — LEFT AS FOUND  FOUND AND TAGGED  REESTABLISHED OBLITERATED CORNER  REBUILT



A.P. # 58-351-11 and 24  
NOT APPLICABLE

PHYSICAL DESCRIPTION OF CORNER FOUND, EVIDENCE AND METHOD USED TO IDENTIFY OR REESTABLISH

NOT APPLICABLE

PHYSICAL DESCRIPTION OF MONUMENTS, REBUILT OR PERPETUATED

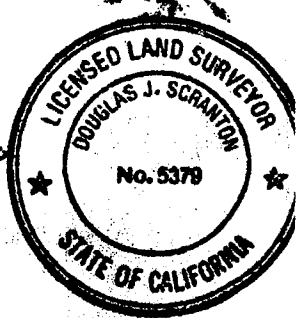
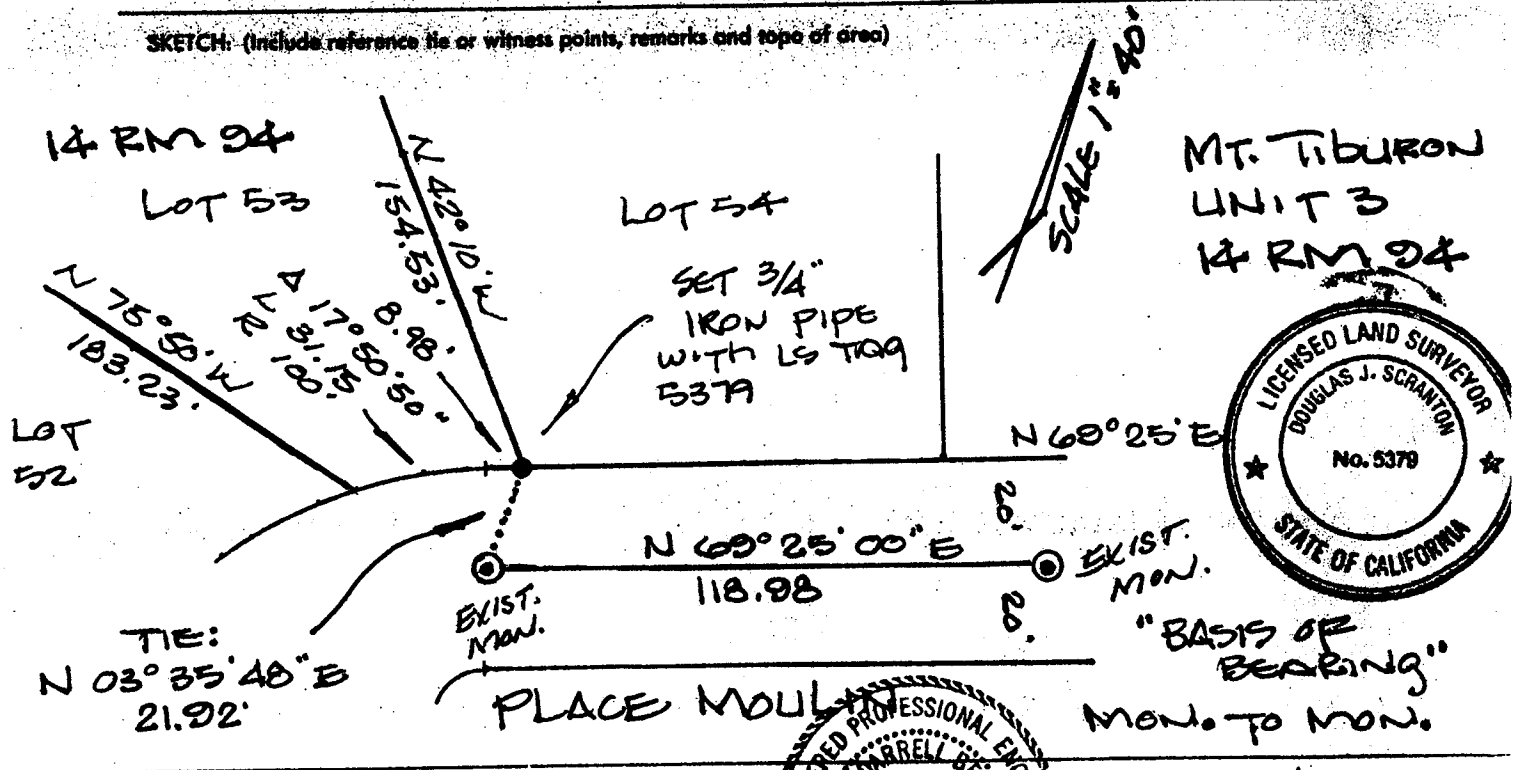
SET 3/4" IRON PIPE WITH LS TAG 5379 @ THE RIGHT OF WAY CORNER COMMON TO LOTS 53 & 54 OF 14 RM 94, MT. TIBURON UNIT 3 [14 RM 94] CORNER SET FROM EXISTING RECORD MONUMENTS

CALIFORNIA COORDINATE SYSTEM ORDER: FIRST  SECOND  THIRD

STATIONS USED: NGS (USC & GS)  STATE  COUNTY  OTHER  STATION \_\_\_\_\_ STATION \_\_\_\_\_

ZONE \_\_\_\_\_ ELEVATION \_\_\_\_\_ NORTHINGS (Y) \_\_\_\_\_ EASTINGS (X) \_\_\_\_\_

SKETCH: (Include reference to or witness points, remarks and topo of area)



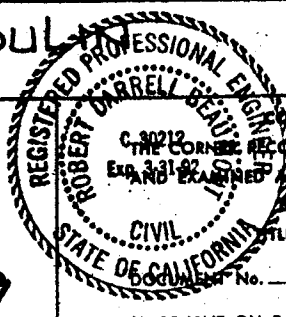
**SURVEYOR'S CERTIFICATE**

THIS CORNER RECORD WAS PREPARED BY ME OR UNDER MY DIRECTION IN CONFORMANCE WITH THE LAND SURVEYORS ACT ON MAY 19 1988

SIGNED: Douglas J. Scranton

L.S. or R.C.E. No.: LS 5379

EXP 6/30/88



COUNTY SURVEYOR'S CERTIFICATE

THIS CORNER RECORD WAS RECEIVED 5/24 1988

AND EXAMINED AND FILED 5/25 1988

FILE: 12301