

CORNER RECORD

Document Number APN 058-341-05

Town of Tiburon

County of Marin, California

Brief Legal Description: Lot 5 "Map of Meadowhill Subdivision in the City of Tiburon, Marin County, California" recorded in Book 14 of Maps at Page 90, Marin County Records.

CORNER TYPE

COORDINATES

(Optional)

Government Corner
Meander
Rancho
Date of Survey August 2005

Control
Property
Other

N. _____
E. _____
Zone _____ Datum _____
Elev. _____

Corner --Left as found Found and tagged Established Reestablished Rebuilt

Identification and type of corner found: Evidence used to identify or procedure used to establish or reestablish the corner.

This survey is based upon found monuments shown on that certain Map entitled "Map of Meadowhill Subdivision in the City of Tiburon, Marin County, California" recorded in Book 14 of Maps at Page 90, Marin County Records.

A Description of the physical condition of the monument as found and as set or reset.

See Sheet two.

SURVEYOR'S STATEMENT

This Corner Record was prepared by me or under my direction in conformance with the Professional Land Act on 8-30-05, 2005.

Signed [Signature] P.L.S. 7053



COUNTY SURVEYOR'S STATEMENT

This Corner Record was received 9-14, 2005 and examined and filed OCTOBER 12, 2005.

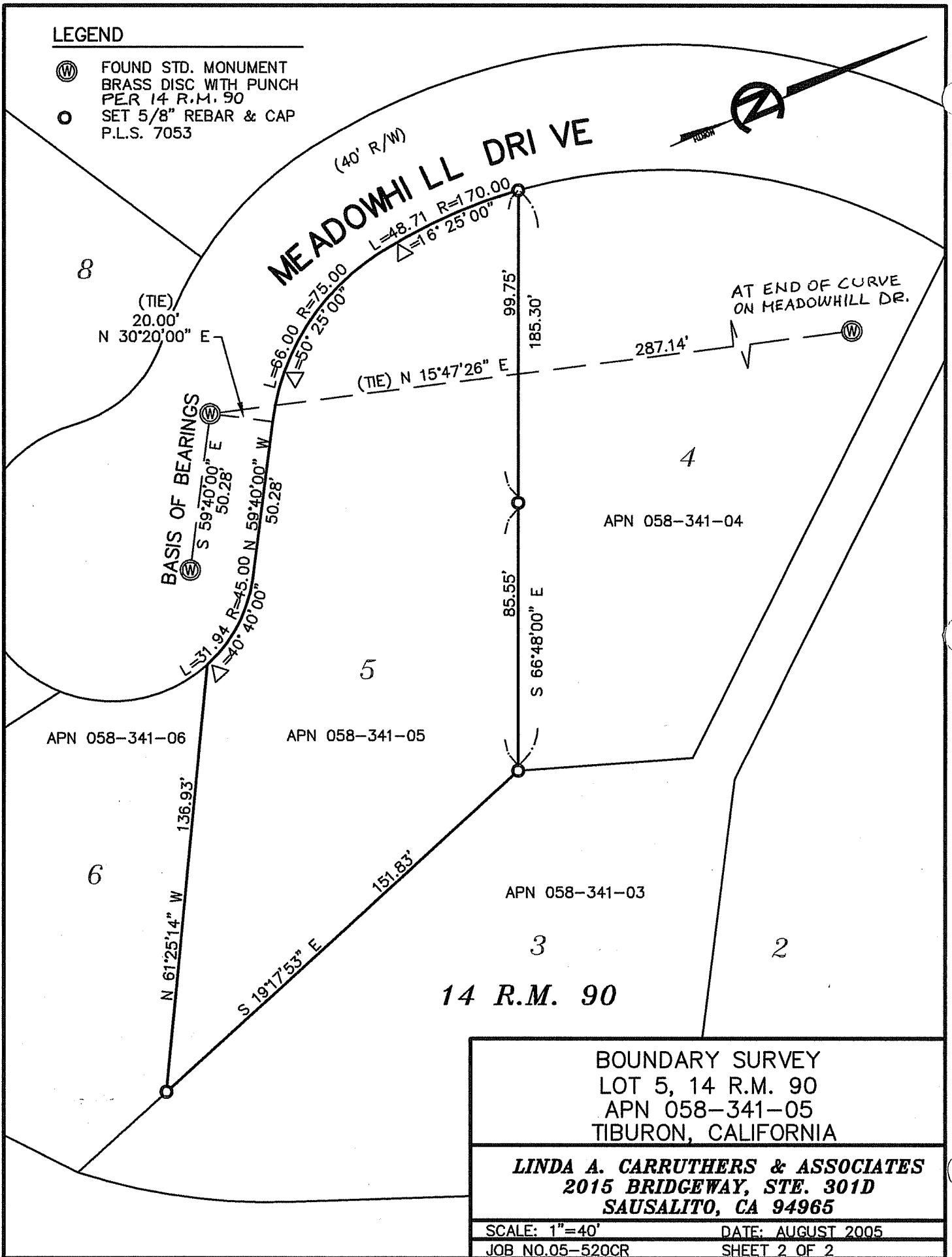
Signed [Signature] Title COUNTY SURVEYOR



County Surveyor's Comments _____

LEGEND

- ⊙ FOUND STD. MONUMENT
BRASS DISC WITH PUNCH
PER 14 R.M. 90
- SET 5/8" REBAR & CAP
P.L.S. 7053



BOUNDARY SURVEY
LOT 5, 14 R.M. 90
APN 058-341-05
TIBURON, CALIFORNIA

LINDA A. CARRUTHERS & ASSOCIATES
2015 BRIDGEWAY, STE. 301D
SAUSALITO, CA 94965

SCALE: 1"=40' DATE: AUGUST 2005
JOB NO.05-520CR SHEET 2 OF 2