

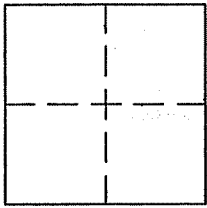
CORNER RECORD

Document Number APN 058-341-03

City of TIBURON

County of MARIN, California

Brief Legal Description LOT 3, 14 RM 90, MAP OF MEADOWHILL SUB.



CORNER TYPE

- Government Corner  Control
- Meander  Property
- Rancho  Other
- Date of Survey \_\_\_\_\_

COORDINATES (Optional)

N. \_\_\_\_\_  
 E. \_\_\_\_\_  
 Zone \_\_\_\_\_ NAD27  NAD83   
 NAD83 Epoch \_\_\_\_\_  
 Elev. \_\_\_\_\_  
 Vert. Datum: NGVD29  NAVD88   
 Meas. Units: Metric  Imperial

Corner - Left as found  Found and tagged  Established  Reestablished  Rebuilt

Identification and type of corner found: Evidence used to identify or procedure used to establish or reestablish the corner:

FOUND STD. ST. MONUMENTS AS SHOWN ON 14 RM 90 AND ON REVERSE. SEE ALSO POINTS SET BY CARRUTHERS CORNER RECORD AS SHOWN ON REVERSE.

A description of the physical condition of the monument as found and as set or reset: SET 3/4" I.P.'S TAGGED PLS 5296 AND PK NAILS W/ TAG PLS 5296 AS SHOWN ON REVERSE.

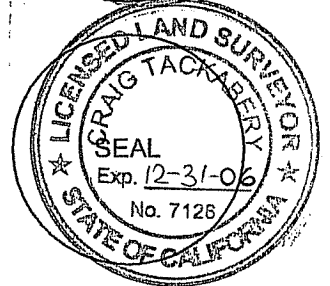
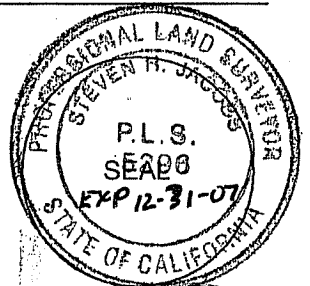
SURVEYOR'S STATEMENT

This Corner record was prepared by me or under my direction in conformance with the Land Surveyor's Act on AUGUST 7, 2006.  
 Signed [Signature] P.L.S. or R.C.E. No. PLS 5296

COUNTY SURVEYOR'S STATEMENT

This Corner Record was received SEPTEMBER 27, 2006  
 and examined and filed NOVEMBER 9, 2006.  
 Signed [Signature] P.L.S. or R.C.E. No. 7128  
 Title COUNTY SURVEYOR

County Surveyor's Comment \_\_\_\_\_

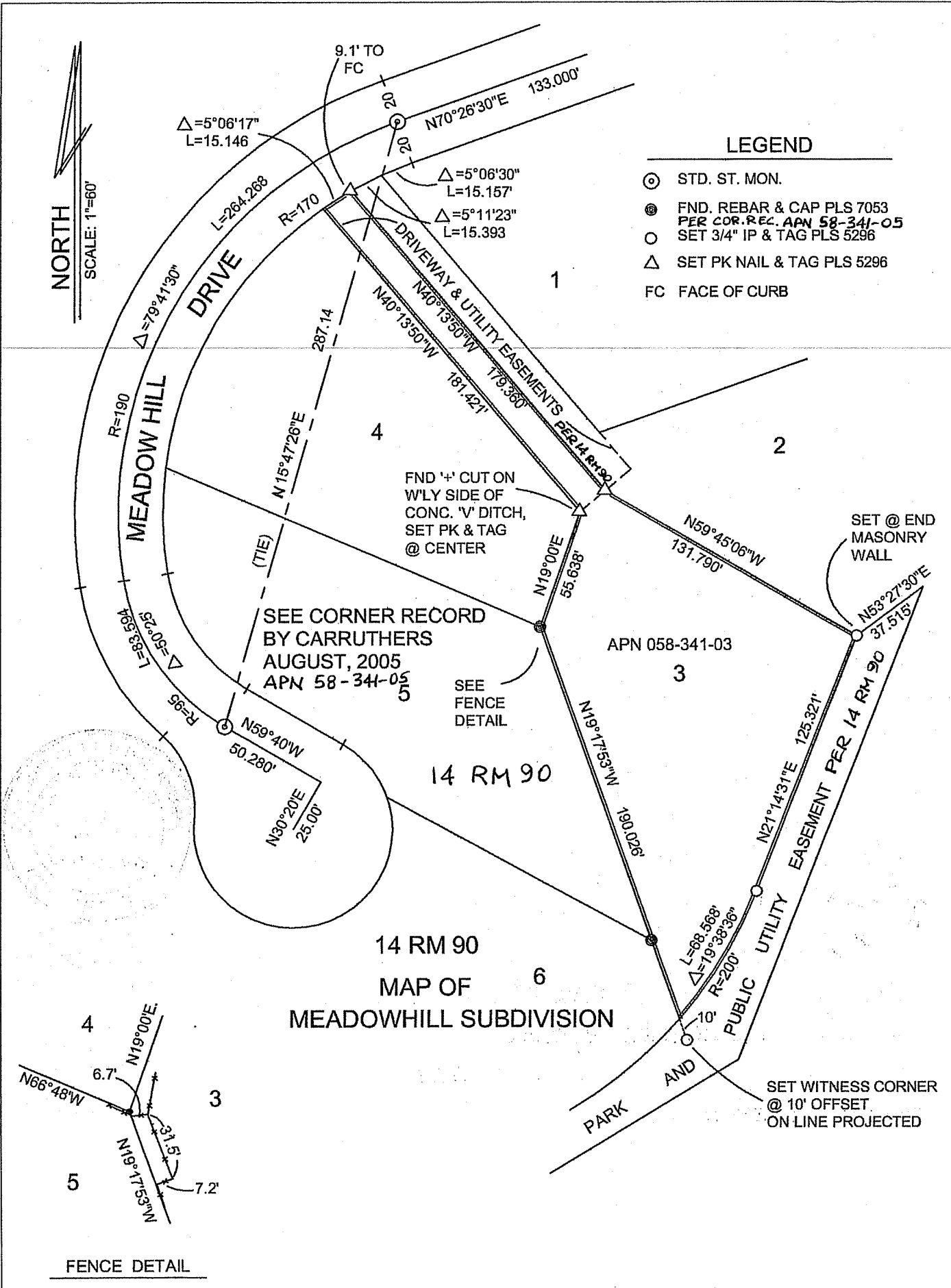


NORTH

SCALE: 1"=60'

LEGEND

- ⊙ STD. ST. MON.
- ⊙ FND. REBAR & CAP PLS 7053  
PER COR. REC. APN 58-341-05
- SET 3/4" IP & TAG PLS 5296
- △ SET PK NAIL & TAG PLS 5296
- FC FACE OF CURB



SEE CORNER RECORD BY CARRUTHERS AUGUST, 2005 APN 58-341-05

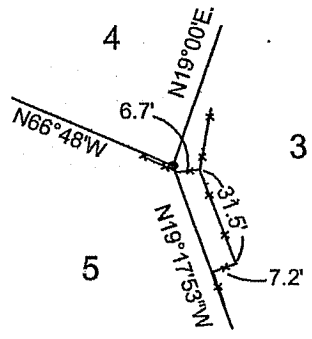
FND '4' CUT ON W'LY SIDE OF CONC. 'V' DITCH, SET PK & TAG @ CENTER

SEE FENCE DETAIL

SET @ END MASONRY WALL

SET WITNESS CORNER @ 10' OFFSET ON LINE PROJECTED

14 RM 90 MAP OF MEADOWHILL SUBDIVISION



FENCE DETAIL