

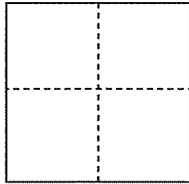
# CORNER RECORD

Documented Number 058-311-02

City of TIBURON

County of MARIN, CALIFORNIA

Brief Legal Description LOT 2, EL MARINERO, 14 MAPS 25, MARIN COUNTY RECORDS



### CORNER TYPE

Government Corner  Control   
Meander  Property   
Rancho  Other

### COORDINATES(Optional)

N. \_\_\_\_\_  
E. \_\_\_\_\_  
Zone \_\_\_\_\_ NAD27  NAD83   
NAD83 Epoch \_\_\_\_\_  
Elevation \_\_\_\_\_  
Vert. Datum: NGVD 29  NADV88   
Meas. Units: Metric  Imperial

DATE OF SURVEY: AUGUST 21, 2012

Corner- Left as found  Found and tagged  Established  Reestablished  Rebuilt

Identification and type of corner found: Evidence used to identify or procedure used to establish or reestablish the corner:  
REESTABLISHED THE SOUTHERLY LINE OF LOT 2, EL MARINERO, 14 MAPS, 25, MARIN COUNTY RECORDS, FROM STANDARD STREET MONUMENTS ON SUGARLOAF DRIVE DEPICTED UPON SAID MAP OF EL MARINERO.

SEE SKETCH ON REVERSE SIDE FOR DETAILS AND FOR POINTS SET AT RANDOMLY PLACED INTERVALS ALONG THE SOUTHERLY LOT LINE AND SETTING THE SOUTHEASTERLY AND SOUTHWESTERLY LOT CORNERS FOR SAID LOT 2.

A description of the physical condition of the monument as found and as set or reset: SET EITHER OF THE FOLLOWING:

1) BRASS NAIL AND BRASS TAG STAMPED "LS 5379" SET IN CONCRETE OR 2) SET 1/2" REBAR WITH YELLOW PLASTIC CAP AFFIXED TO TOP OF REBAR, CAP STAMPED "SCRANTON, PLS 5379". THE TOP OF THE REBAR WITH THE CAP AFFIXED TO THE TOP OF THE REBAR WAS DRIVEN FLUSH TO THE SURROUNDING GRADE.

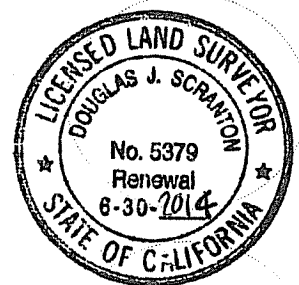
SEE SKETCH ON REVERSE SIDE FOR SPECIFIC LOCATIONS OF EITHER TYPE OF POINT SET AS A PART OF THIS SURVEY.

### SURVEYOR'S STATEMENT

This Corner Record was prepared by me or under my direction in conformance with

the Land Surveyor's Act on SEPTEMBER 14, 2012

Signed *Douglas J. Scranton* P.L.S. or R.C.E. No.: PLS 5379



### COUNTY SURVEYOR'S STATEMENT

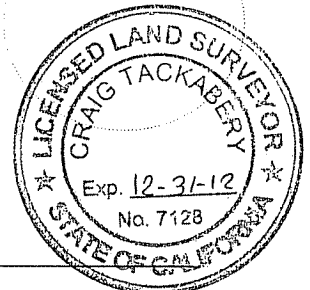
This Corner Record was received SEPTEMBER 17, 2012 and examined

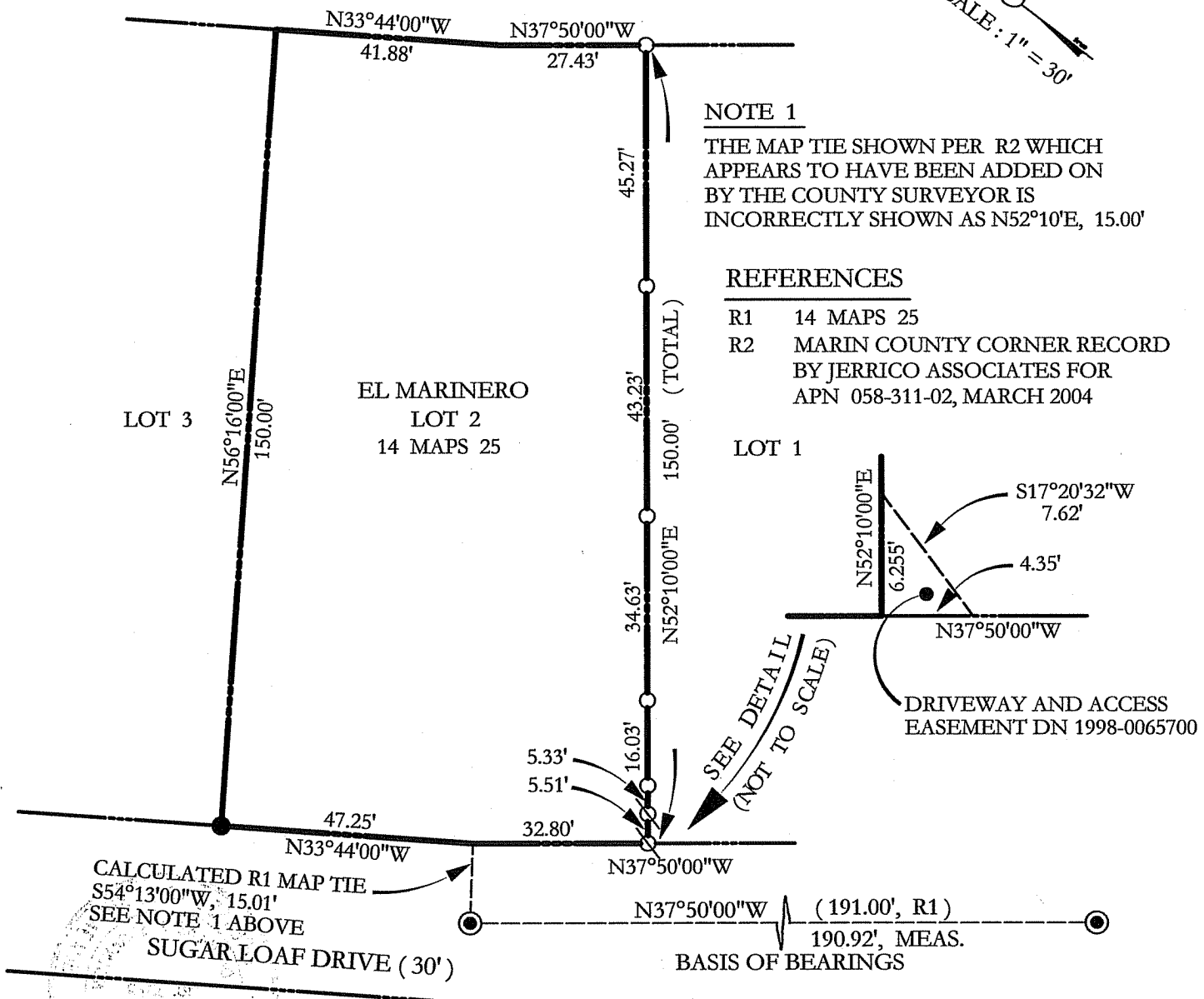
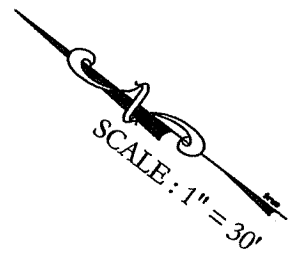
and filed OCTOBER 2, 2012

Signed *Craig Tackabery* P.L.S. or R.C.E. No.: 7128

Title COUNTY SURVEYOR

County Surveyor's Comment \_\_\_\_\_





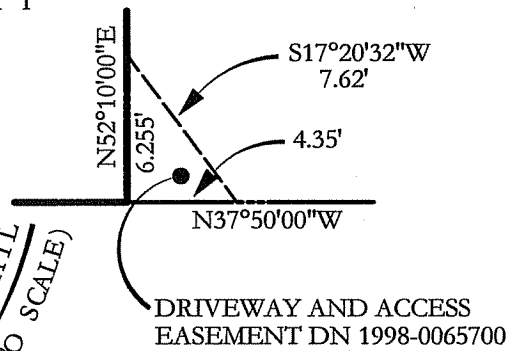
**NOTE 1**

THE MAP TIE SHOWN PER R2 WHICH APPEARS TO HAVE BEEN ADDED ON BY THE COUNTY SURVEYOR IS INCORRECTLY SHOWN AS N52°10'E, 15.00'

**REFERENCES**

- R1 14 MAPS 25
- R2 MARIN COUNTY CORNER RECORD BY JERRICO ASSOCIATES FOR APN 058-311-02, MARCH 2004

**LOT 1**



**LEGEND**

- ⊙ STANDARD STREET MONUMENT PER R1
- SET 1/2" REBAR WITH PLASTIC CAP STAMPED PLS 5379
- ⊗ SET BRASS NAIL AND BRASS TAG LS 5379 IN CONCRETE
- FOUND NAIL AND TAG LS 3887 PER R2

**BASIS OF BEARINGS**

TAKEN AS NORTH 37°50'00" WEST BETWEEN STANDARD STREET MONUMENTS PER R1 AS SHOWN HEREON

ALL DIMENSIONS GIVEN IN FEET AND DECIMALS THEREOF

NO EASEMENTS ARE SHOWN

