

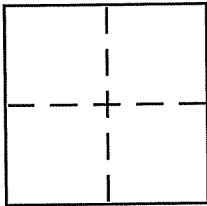
**CORNER RECORD**

Document Number APN 58-271-07

City of TIBURON

County of MARIN, California

Brief Legal Description APN 058-271-07, LOT 71 11 P.M. 72 M.C.R.



**CORNER TYPE**

Government Corner  Control   
Meander  Property   
Rancho  Other   
Date of Survey \_\_\_\_\_

**COORDINATES (Optional)**

N. \_\_\_\_\_  
E. \_\_\_\_\_  
Zone \_\_\_\_\_ NAD27  NAD83   
NAD83 Epoch \_\_\_\_\_  
Elev. \_\_\_\_\_  
Vert. Datum: NGVD29  NAVD88   
Meas. Units: Metric  Imperial

Corner - Left as found  Found and tagged  Established  Reestablished  Rebuilt

Identification and type of corner found: Evidence used to identify or procedure used to establish or reestablish the corner:  
11 P.M. 72 TWO FOUND MONUMENTS ON CENTERLINE OF BARTEL CT. USED FOR BASIS OF BEARINGS. PROPERTY CORNER AT SOUTHEAST CORNER OF LOT 71 RE-SET USING RECORD BEARINGS & DISTANCES.

A description of the physical condition of the monument as found and as set or reset:  
SET 1/2" IRON PIPE WITH PLASTIC TAG L5 7237

**SURVEYOR'S STATEMENT**

This Corner Record was prepared by me or under my direction in conformance with the Land Surveyor's Act on MARCH 7 2008  
Signed Michael E. Ford (P.L.S. or R.C.E. No. 7237)

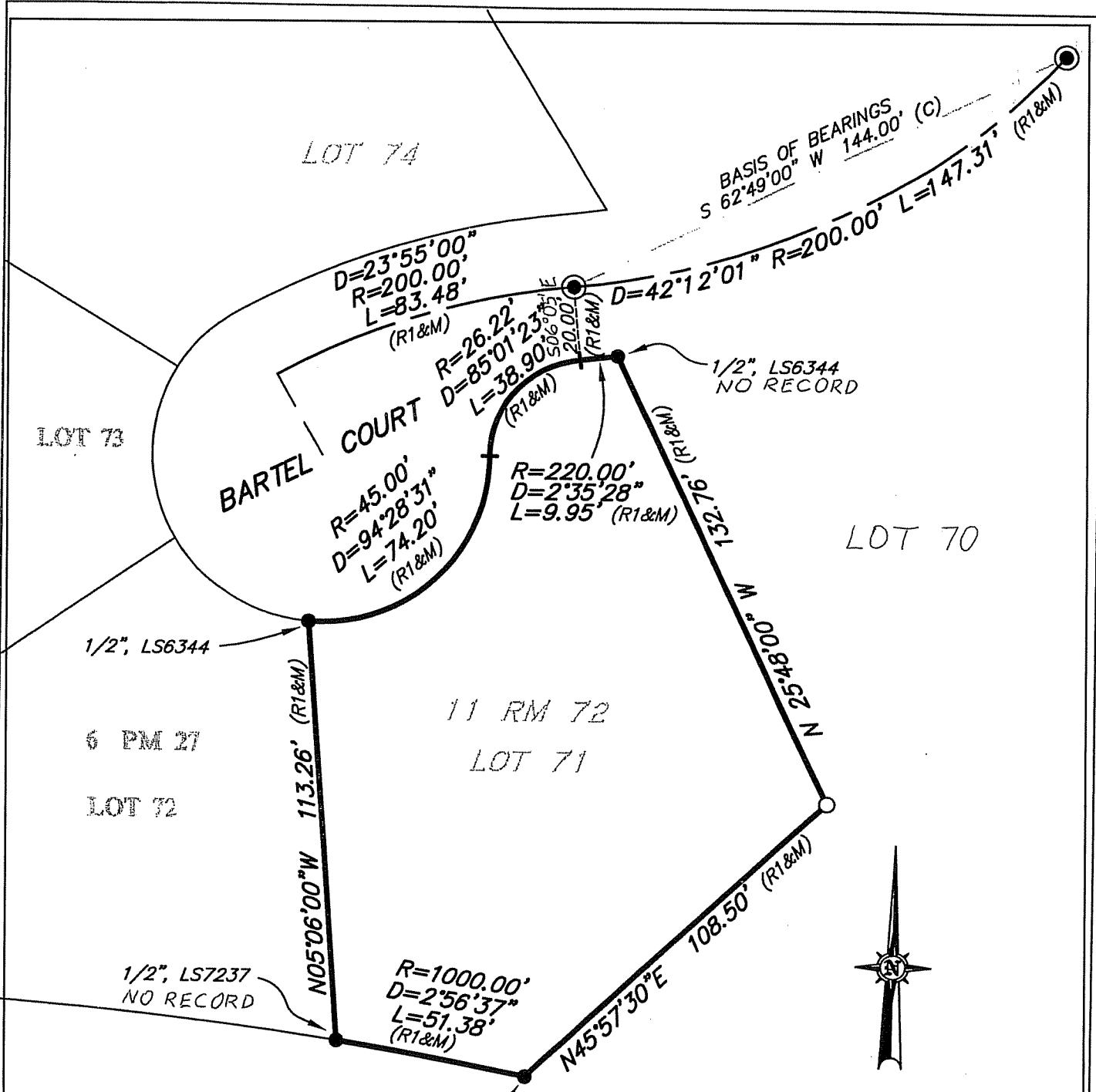


**COUNTY SURVEYOR'S STATEMENT**

This Corner Record was received MARCH 28, 2008  
and examined and filed MAY 8, 2008  
Signed \_\_\_\_\_ (P.L.S. or R.C.E. No. 7128)  
Title COUNTY SURVEYOR

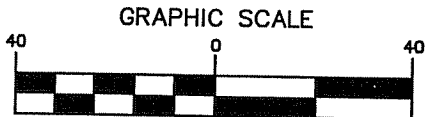


County Surveyor's Comment \_\_\_\_\_



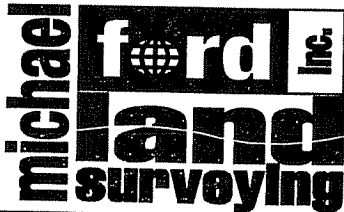
**LEGEND**

- FOUND MON. WELL, PIN IN CC
- FOUND IRON PIPE, AS NOTED
- SET 1/2" IRON PIPE, LS7237
- R1 11 RM 72
- (C) CALCULATED
- (M) MEASURED



( IN FEET )  
1 inch = 40 ft.

**BASIS OF BEARINGS**  
S 62°49'00" W BETWEEN FOUND CENTERLINE MONUMENTS ON BARTEL COURT, AS SHOWN ON MAP OF MARINERO RESIDENCE NO. 1, UNIT 2, AS FILED IN BK.11 OF MAPS, PAGE 72, MARIN COUNTY RECORDS.



8910 sonoma hwy suite 12b  
po box 1243, kenwood, ca 95452  
p 707.833.6468 - f 707.833.5744  
www.michaelfordinc.com