

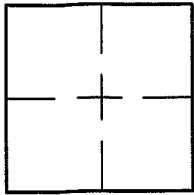
CORNER RECORD

Document Number A.P.# 058-261-19

City of TIBURON

County of MARIN, California

Brief Legal Description LOT 41 PER 11 R.M. 57



CORNER TYPE **COORDINATES (Optional)**

Government Corner Control

Meander Property

Rancho Other

Date of Survey 5/9/05

N. _____
 E. _____
 Zone _____ NAD27 NAD83
 NAD83 Epoch _____
 Elev. _____
 Vert. Datum: NGVD29 NAVD88
 Meas. Units: Metric Imperial

Corner- Left as found Found and tagged Established Reestablished Rebuilt

Identification and type of corner found: Evidence used to identify or procedure used to establish or reestablish the corner:
ESTABLISHED AND FOUND EXISTING PROPERTY CORNERS PER 11 R.M. 57

A description of the physical condition of the monument as found and as set or reset: SEE SHEET 2.

SURVEYOR'S STATEMENT

This Corner Record was prepared by me or under my direction in conformance with
 the Land Surveyor's Act on MAY 9 2005
 Signed Lawrence P. Doyle P.L.S. or R.C.E. No. P.L.S. 4694



COUNTY SURVEYOR'S STATEMENT

This Corner Record was received MAY 31, 2005
 and examined and filed JULY 28, 2005
 Signed [Signature] P.L.S. or R.C.E. No. 7128
 Title COUNTY SURVEYOR



County Surveyor's Comment _____



LOT 43
14 R.M. 94

LOT 41
11 R.M. 57

LOT 42
11 R.M. 57

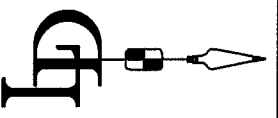
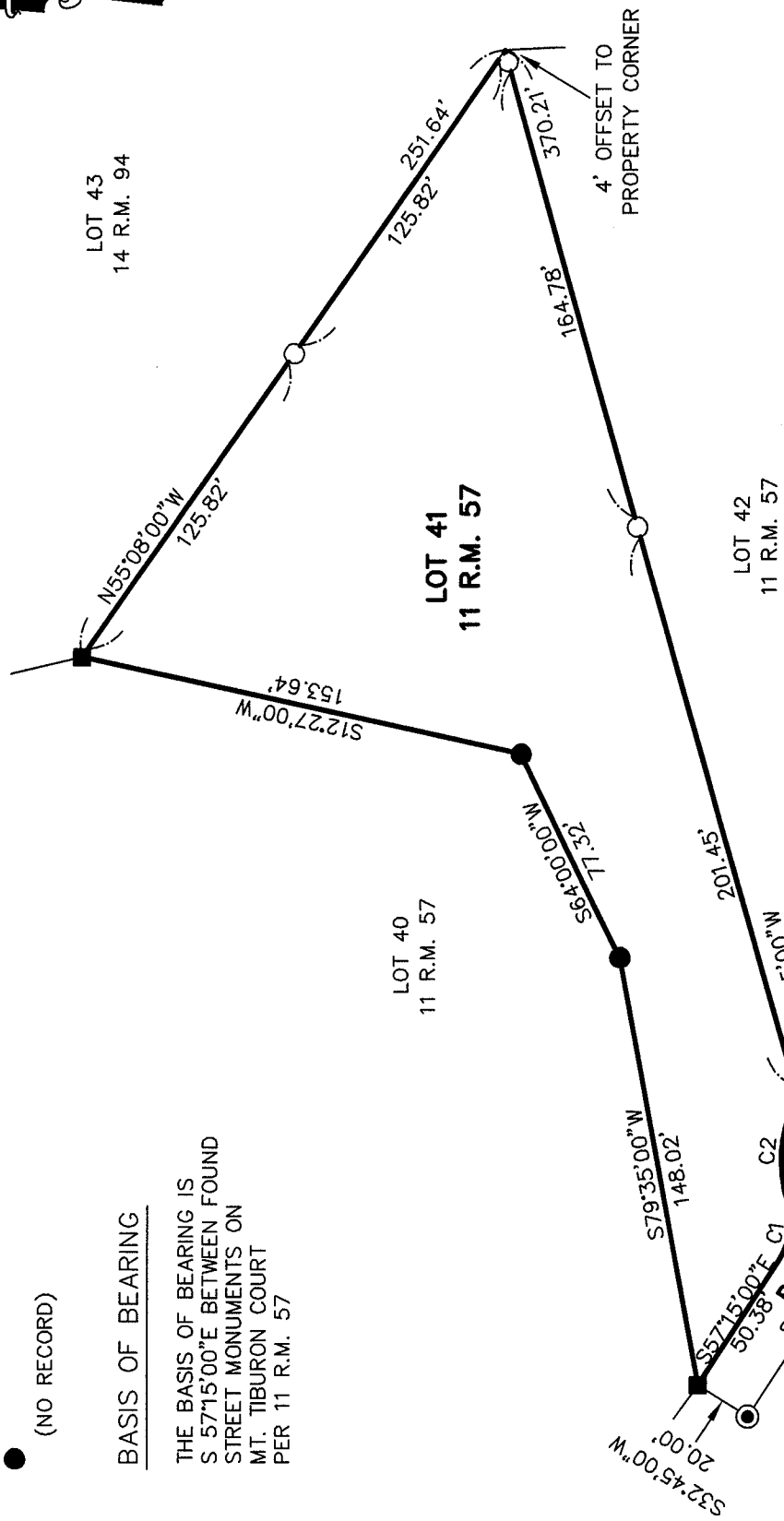
LOT 40
11 R.M. 57

(NO RECORD)

BASIS OF BEARING

THE BASIS OF BEARING IS
S 57°15'00"E BETWEEN FOUND
STREET MONUMENTS ON
MT. TIBURON COURT
PER 11 R.M. 57

-
-
-



CURVE TABLE			
CURVE	LENGTH	RADIUS	DELTA
C1	21.81'	25.00'	Δ=49°59'42"
C2	36.19'	45.00'	Δ=46°04'53"

CORNER RECORD
LOT 41 / 11 R.M. 57
 TIBURON MARIN COUNTY CALIFORNIA

SCALE: 1" = 60'
 DATE: 5/9/05
 DRAWN BY: SHEET 2 OF 2

LAWRENCE P. DOYLE
 LAND SURVEYOR/CIVIL ENGINEER
 P.O. BOX 1609 MILL VALLEY CA 94942 (415-388-9585)
 DRAWING NO. 1369-05

MOUNT TIBURON COURT
R/W 40'