

AP # 58-261-07

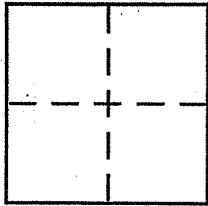
CORNER RECORD

Document Number _____

City of Tiburon

County of Marin, California

Brief Legal Description Being Lot 29, Map of Mt. Tiburon Unit 2 (11 RM 57)



CORNER TYPE

Government Corner Control
Meander Property
Rancho Other
Date of Survey Nov. 14, 2006

COORDINATES (Optional)

N. _____
E. _____
Zone _____ NAD27 NAD83
NAD83 Epoch _____
Elev. _____
Vert. Datum: NGVD29 NAVD88
Meas. Units: Metric Imperial

Corner -- Left as found Found and tagged Established Reestablished Rebuilt

Identification and type of corner found: Evidence used to identify or procedure used to establish or reestablish the corner:

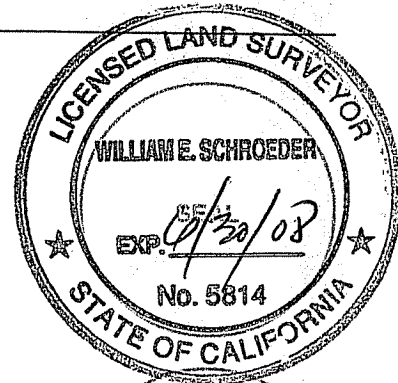
Found Standard Street Monuments per Map of Mt. Tiburon Unit 2, See Page 2.

A description of the physical condition of the monument as found and as set or reset: Set Points as shown on page 2.

SURVEYOR'S STATEMENT

This Corner Record was prepared by me or under my direction in conformance with the Land Surveyor's Act on 1/26/07

Signed [Signature] P.L.S or R.C.E. No. 5814



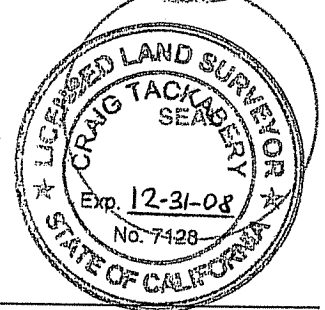
COUNTY SURVEYOR'S STATEMENT

This Corner Record was received JANUARY 29, 2007

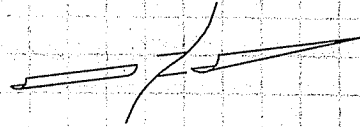
and examined and filed FEBRUARY 1, 2007

Signed [Signature] P.L.S or R.C.E. No. 7128

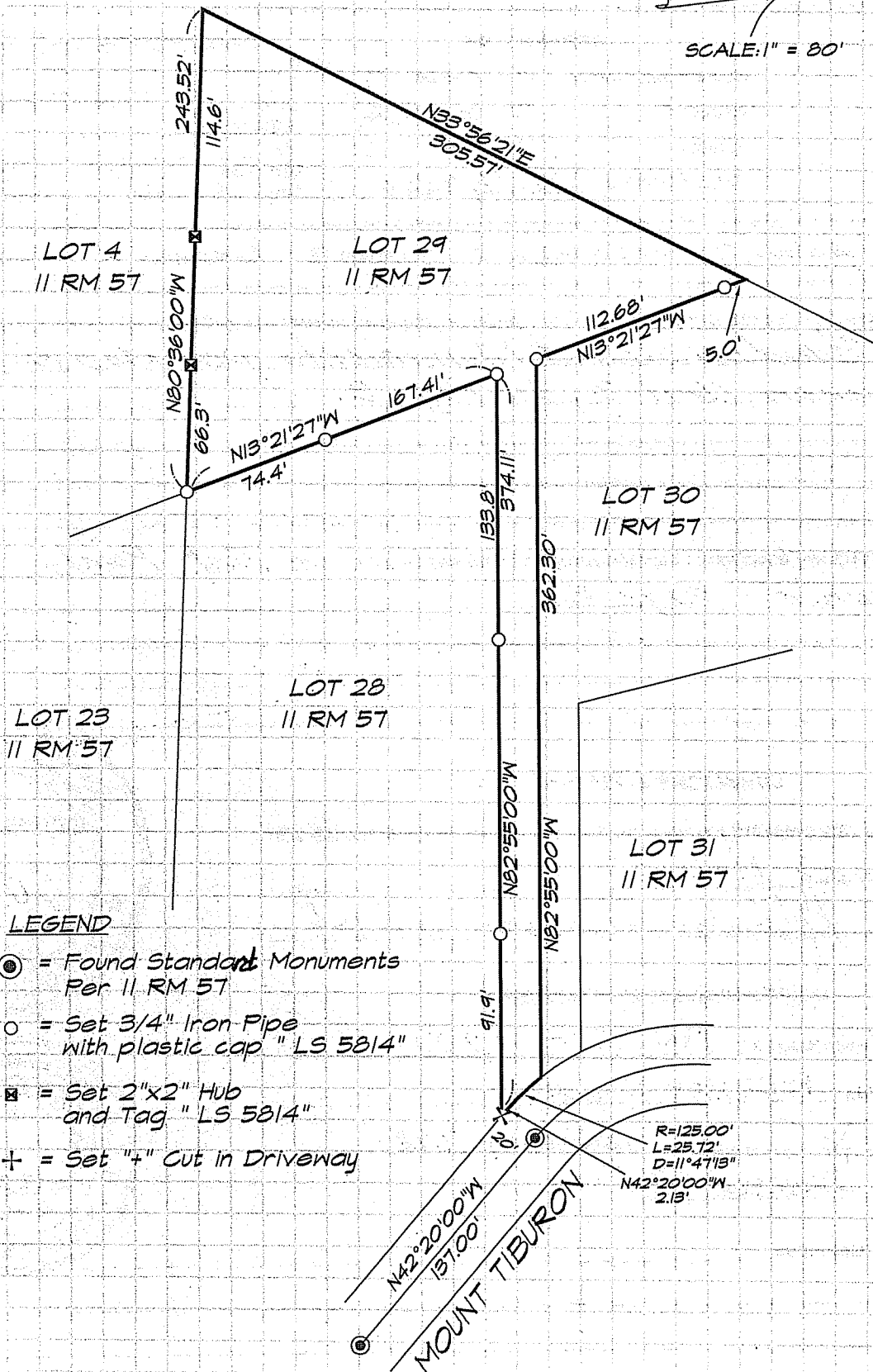
Title COUNTY SURVEYOR



County Surveyor's Comment _____



SCALE: 1" = 80'



LEGEND

- ⊙ = Found Standard Monuments Per 11 RM 57
- = Set 3/4" Iron Pipe with plastic cap "LS 5814"
- ⊠ = Set 2"x2" Hub and Tag "LS 5814"
- + = Set "+" Cut in Driveway

R=125.00'
L=25.72'
D=11°47'15"
N42°20'00"W
2.13'

MOUNT TIBURON

S-1032