

CORNER RECORD

Document Number

058-261-02

City of Tiburon

County of Marin

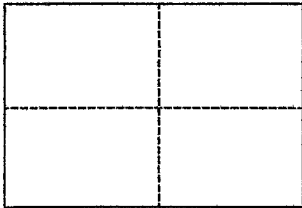
California

Brief Legal Description

Lot 24 of 11 RM 57, Marin County Records

CORNER TYPE

**COORDINATES
(Optional)**



Government Corner Control
 Meander Property
 Rancho Other
 Date of Survey December 08, 2013

North _____
 East _____
 Zone _____ Datum _____
 Elev. _____

Corner _____ Left as found Found and tagged Established Reestablished Rebuilt

Identification and type of corner found: Evidence used to identify or procedure used to establish or reestablish the corner:

Held Record Monuments and Record Data per 11 RM 57.

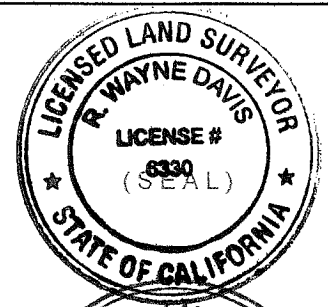
A description of the physical condition of the monument as found and as set or reset: _____

Set Rebar & Cap Tagged LS 6330 unless shown otherwise on attached plat.

SURVEYOR'S STATEMENT

This Corner Record was prepared by me or under my direction in conformance with the Land Surveyors' Act on December 9, 2013

Signed *R. Wayne Davis* L.S. Number 6330



COUNTY SURVEYOR'S STATEMENT

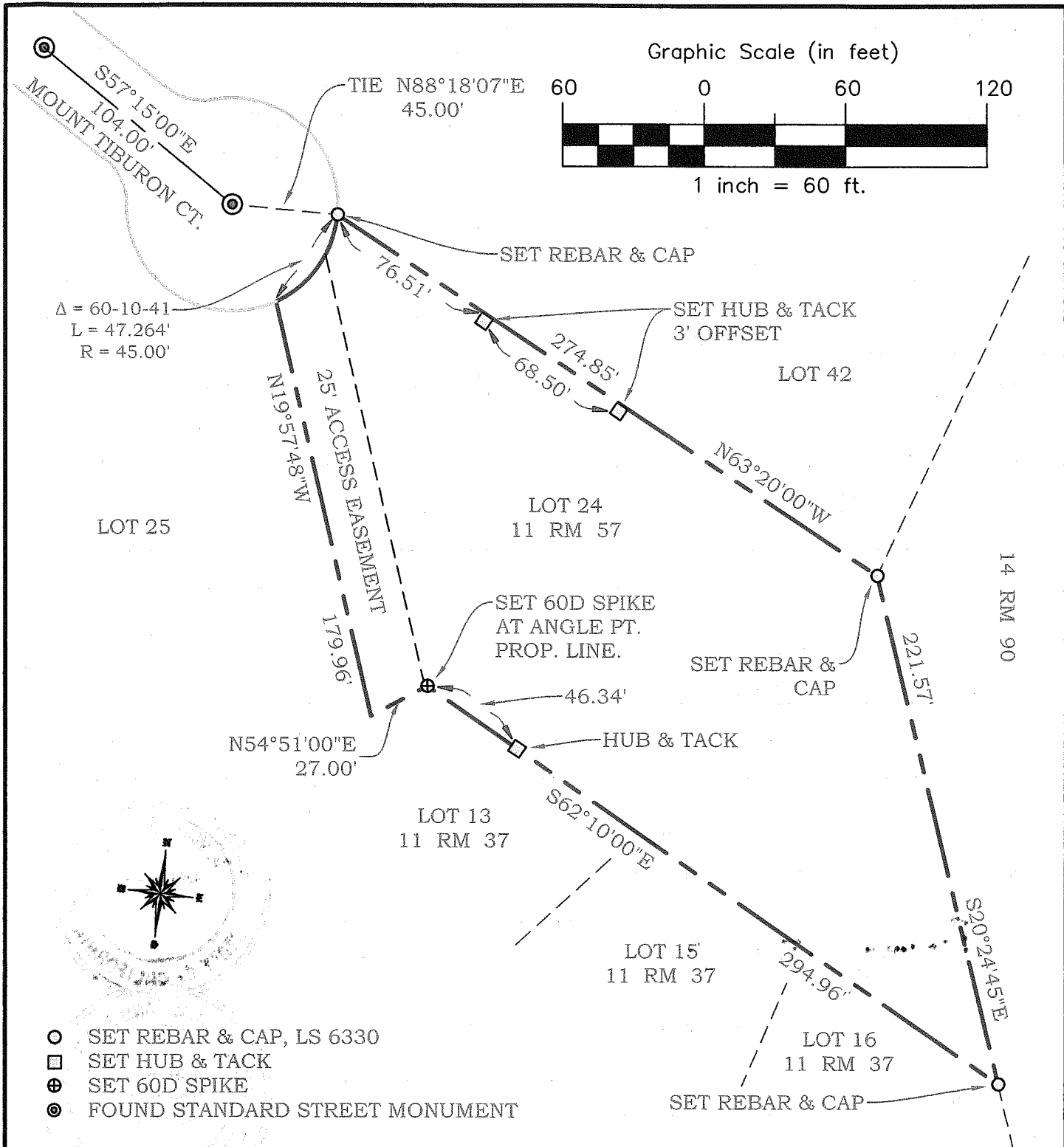
This Corner Record was received FEB. 06, 2014

and examined and filed MARCH 4, 2014

Signed *Richard G. Simonitch* Title DEPUTY



County Surveyor's Comment _____



- SET REBAR & CAP, LS 6330
- SET HUB & TACK
- ⊕ SET 60D SPIKE
- ⊙ FOUND STANDARD STREET MONUMENT



R.W. DAVIS & ASSOCIATES, INC.
LAND SURVEYORS

45 Leveroni Court
Novato CA 94949
L.S. 6330

Tel. (415) 883-9099
Fax (415) 883-2016
Email: rwdavis@rwdavis-survey.com

© 2013

Rev.	Date: 12-09-13
Job No. 421-001	Scale: 1"=60'

CORNER RECORD

APN 058 - 261 - 02
TIBURON CALIFORNIA