

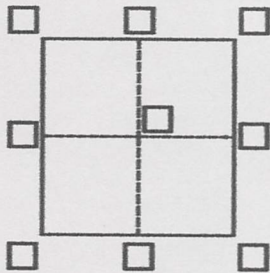
CORNER RECORD

Agency Index 21-023

Document Number 058-252-15

City of SAN ANSELMO County of MARIN, California

Brief Legal Description LOT 23



CORNER TYPE

Government Corner Control
 Meander Property
 Rancho Other

Date of Survey May 20, 2019

COORDINATES (Optional)

N. _____ E. _____

Elevation _____

Units Metric U.S. Survey Foot

Horizontal Datum _____

Zone _____ Epoch Date _____

Vertical Datum _____

Complies with Public Resources Code §§8801-8819

Complies with Public Resources Code §§8890-8902

PLS Act Ref.: 8765(d) 8771 8773 Other:

Corner/Monument: Left as found Established Rebuilt Pre-Construction
 Found and tagged Reestablished Referenced Post-Construction

Narrative of corner identified and monument as found, set, reset, replaced, or removed:

See sheet #2 for description(s):

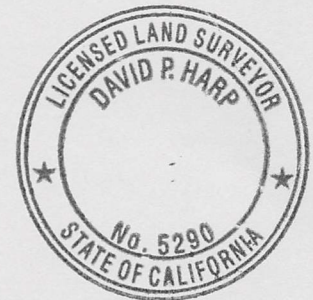
FOUND STANDARD STREET MONUMENTS AND PINS PER 11 RM 37, AND FOUND POINTS SET PER CORNER RECORDS 058-267-06(11/21/03) AND 058-252-15(12/25/09). FROM MEASUREMENT OF THESE POINTS ONE CORNER WAS SET AND TWO LINE POINTS WERE SET. (SEE SHEET TWO)

SURVEYOR'S STATEMENT

This Corner Record was prepared by me or under my direction in conformance with

the Professional Land Surveyors' Act on February 15, 2021

Signed David Harp P.L.S. or R.C.E. No. PLS 5290



COUNTY SURVEYOR'S STATEMENT

This Corner Record was received 2-25-21

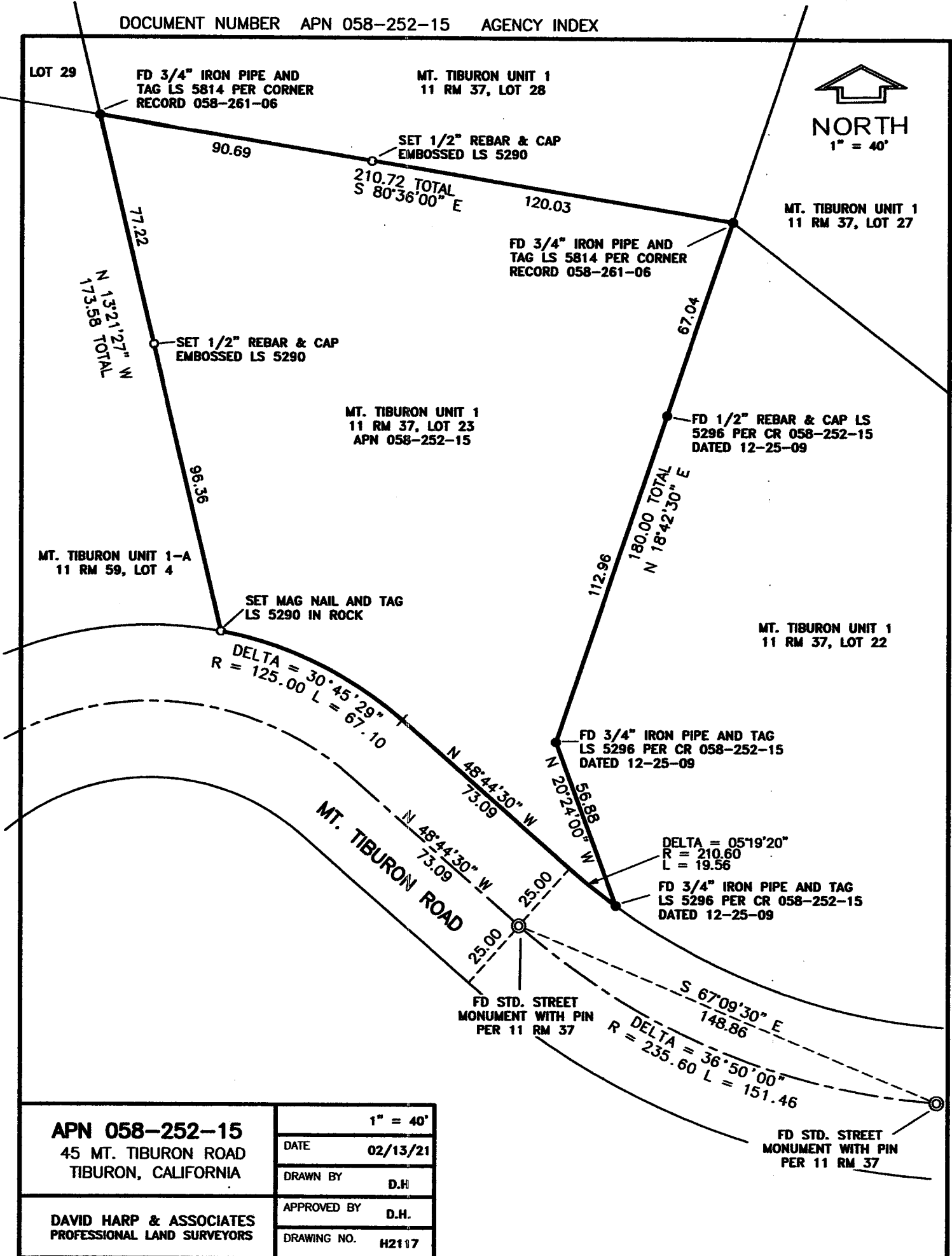
and examined and filed 5-12-21

Signed [Signature] P.L.S. or R.C.E. No. 9292

Title DEPUTY

County Surveyor's Comment





<p>APN 058-252-15 45 MT. TIBURON ROAD TIBURON, CALIFORNIA</p>	<p>1" = 40'</p>
	<p>DATE 02/13/21</p>
<p>DAVID HARP & ASSOCIATES PROFESSIONAL LAND SURVEYORS</p>	<p>DRAWN BY D.H.</p>
	<p>APPROVED BY D.H.</p>
	<p>DRAWING NO. H2117</p>