

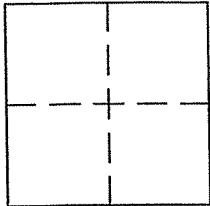
CORNER RECORD

Document Number APN 058-252-15

City of TIBURON

County of MARIN, California

Brief Legal Description LOT 23, 11 RM 37



CORNER TYPE

Government Corner Control
Meander Property
Rancho Other
Date of Survey 12-25-09

COORDINATES (Optional)

N. _____
E. _____
Zone _____ NAD27 NAD83
NAD83 Epoch _____
Elev. _____
Vert. Datum: NGVD29 NAVD88
Meas. Units: Metric Imperial

Corner - Left as found Found and tagged Established Reestablished Rebuilt

Identification and type of corner found: Evidence used to identify or procedure used to establish or reestablish the corner:
FOUND STD. ST. WELL MONUMENTS AS SHOWN ON 11 RM 37 AND 3/4" IP'S TAGGED LS 5814 AS SHOWN ON CORNER RECORD AS DEPICTED ON REVERSE.

A description of the physical condition of the monument as found and as set or reset:
SET 3/4" IP'S TAGGED PLS 5296 AND 2"X2" HUB TAGGED PLS 5296 AS SHOWN ON REVERSE.

SURVEYOR'S STATEMENT

This Corner record was prepared by me or under my direction in conformance with the Land Surveyor's Act of JANUARY 13, 2010

Signed [Signature] P.L.S. or R.C.E. No. PLS 5296

COUNTY SURVEYOR'S STATEMENT

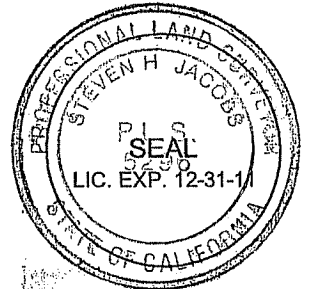
This Corner Record was received MARCH 3, 2010

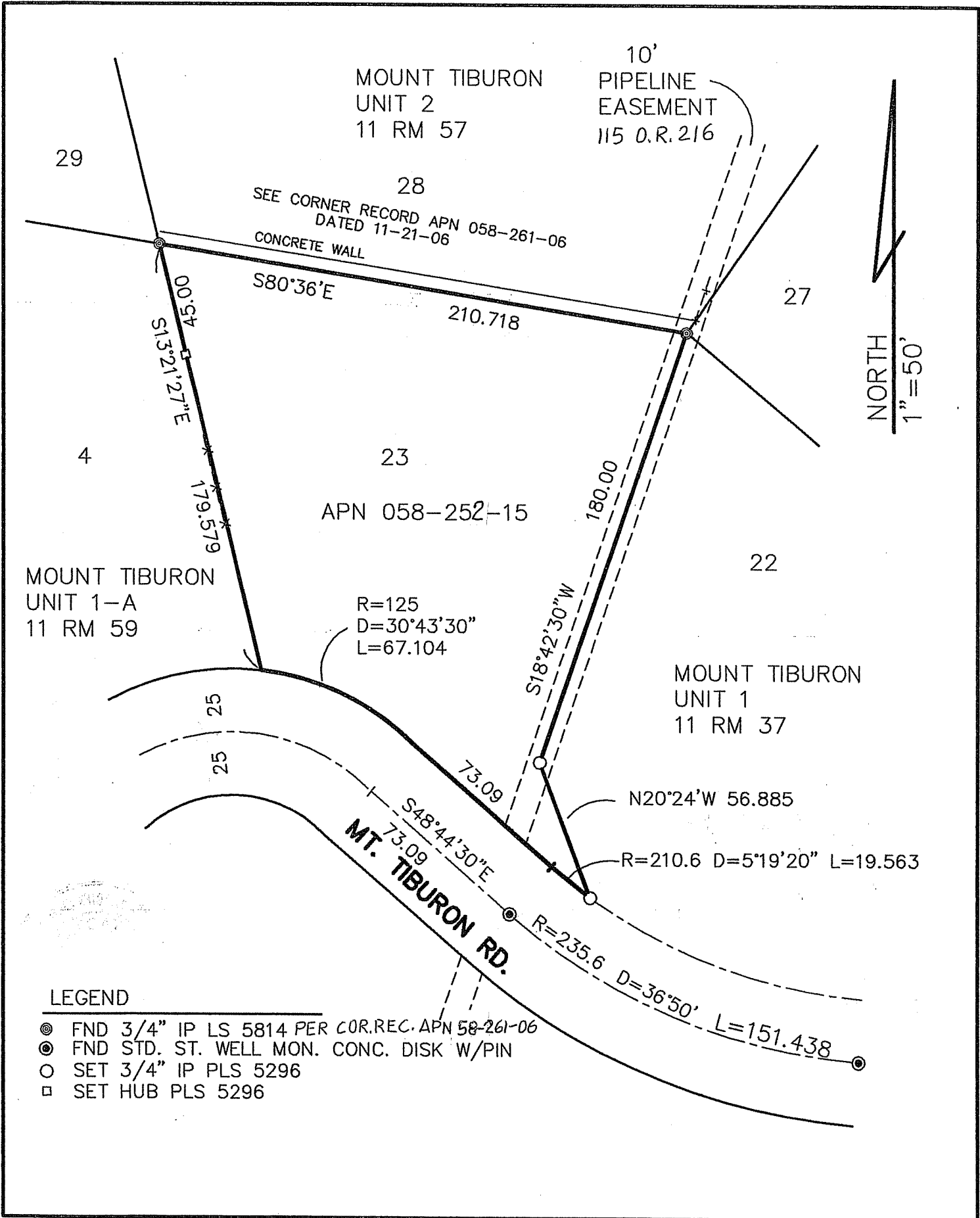
and examined and filed MARCH 24, 2010

Signed [Signature] P.L.S. or R.C.E. No. 7128

Title COUNTY SURVEYOR

County Surveyor's Comment _____





LEGEND

- ⊙ FND 3/4" IP LS 5814 PER COR.REC. APN 58-261-06
- ⊙ FND STD. ST. WELL MON. CONC. DISK W/PIN
- SET 3/4" IP PLS 5296
- SET HUB PLS 5296