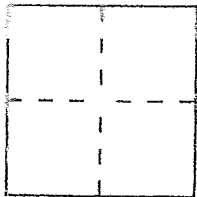


CORNER RECORD

Document Number 058-251-02

City of Tiburon County of Marin, California

Brief Legal Description Lot 7 of 11 RM 37



CORNER TYPE

Government Corner  Control   
Meander  Property   
Rancho  Other   
Date of Survey July 1, 2016

COORDINATES (Optional)

N. \_\_\_\_\_  
E. \_\_\_\_\_  
Zone \_\_\_\_\_ Datum \_\_\_\_\_  
Elev. \_\_\_\_\_

Corner — Left as found  Found and tagged  Established  Reestablished  Rebuilt

Identification and type of corner found: Evidence used to identify or procedure used to establish or reestablish the corner:

Found standard original street monuments per 11 RM 37.

A description of the physical condition of the monument as found and as set or reset:

Found property corners as shown (over) and set nail + brass tag embossed LS 5290, and 1/2 bars & cap embossed LS 5290

SURVEYOR'S STATEMENT

This Corner Record was prepared by me or under my direction in conformance with the Land Surveyors' Act on July 5, 2016

Signed David Harp L.S. or R.C.E. Number LS 5290



COUNTY SURVEYOR'S STATEMENT

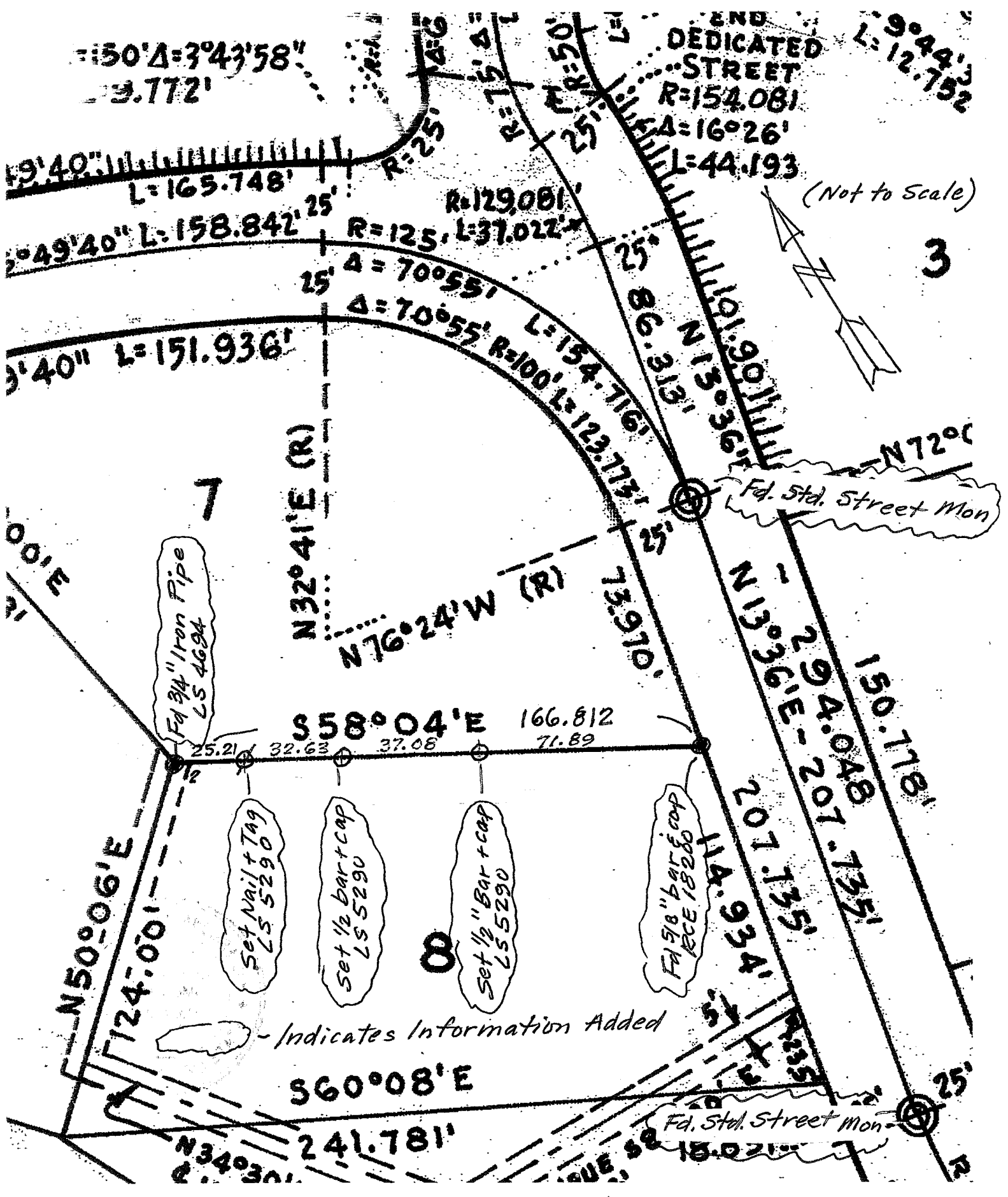
This Corner Record was received July 7, 2016 and examined

and filed AUGUST 4, 2016

Signed Richard G. Simonitch Title County Surveyor



County Surveyor's Comment \_\_\_\_\_



$\Delta = 3^\circ 43' 58''$   
 $L = 3.772'$

END DEDICATED STREET  
 $R = 154.081$   
 $\Delta = 16^\circ 26'$   
 $L = 44.193$   
 $L = 9^\circ 44' 33''$   
 $L = 12.752$

(Not to Scale)

3

$19^\circ 40''$   
 $L = 165.748'$

$2^\circ 49' 40''$   
 $L = 158.842'$

$R = 129.001'$   
 $L = 37.022'$   
 $R = 125'$

$3^\circ 40''$   
 $L = 151.936'$

$\Delta = 70^\circ 55'$   
 $\Delta = 70^\circ 55'$   
 $R = 100'$   
 $L = 123.113'$

$N 13^\circ 36' 19'' E$   
 $L = 101.901'$   
 $N 13^\circ 36' 19'' E$   
 $L = 86.313'$

$N 72^\circ 0'$

F.d. Std. Street Mon

$00^\circ E$

Fd 3/4" Iron Pipe  
 LS 4624

$N 32^\circ 41' E (R)$

$N 76^\circ 24' W (R)$

$S 58^\circ 04' E$   
 $166.812$   
 $25.21$   $32.63$   $37.08$   $71.89$

$N 50^\circ 06' E$

$L = 124.001'$

Set Nail + Tag  
 LS 5290

Set 1/2 bar + cap  
 LS 5290

Set 1/2" Bar + cap  
 LS 5290

Fd 9/8" bar + cap  
 REE 18200

$N 13^\circ 36' E$   
 $L = 201.135'$   
 $L = 114.934'$

$150.118'$   
 $294.048$   
 $201.735'$

- Indicates Information Added

$S 60^\circ 08' E$

$N 34^\circ 30'$

$L = 241.781'$

F.d. Std. Street Mon

$25^\circ$