

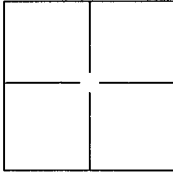
# CORNER RECORD

Document Number APN 058-231-17

City of TIBURON

County of MARIN, California

Brief Legal Description LOT 54 10 RM 75 . MAP OF MARINERD RESIDENCE No. i



### CORNER TYPE

Government Corner  Control   
Meander  Property   
Rancho  Other

Date of Survey FEBRUARY 3, 2005

### COORDINATES(Optional)

N. \_\_\_\_\_  
E. \_\_\_\_\_  
Zone \_\_\_\_\_ NAD27N  AD83   
NAD83 Epoch \_\_\_\_\_  
Elev. \_\_\_\_\_  
Vert. Datum: NGVD29  NADV88   
Meas. Units: Metric  Imperial

Corner - Left as found  Found and tagged  Established  Reestablished  Rebuilt

Identification and type of corner found: Evidence used to identify or procedure used to establish or reestablish the corner:

REESTABLISHED TWO CORNERS FROM EXISTING STREET MONUMENTS  
FOUND FOUR EXISTING CORNERS SEE SHEET # 2

A description of the physical condition of the monument as found and as set or reset:

SET 3/4" IRON PIPE AND PLASTIC PIPE, ACE 30465

### SURVEYOR'S STATEMENT

This Corner Record was prepared by me or under my direction in conformance with the Land Surveyor's Act on April 1, 2005.

Signed Jay H P.L.S. or R.C.E. No.: 30465

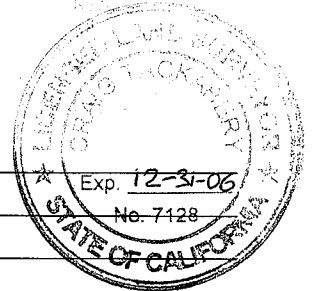
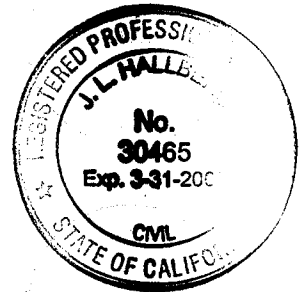
### COUNTY SURVEYOR'S STATEMENT

This Corner Record was received APRIL 2, 2005 and examined and filed APRIL 6, 2005.

Signed C P.L.S. or R.C.E. No.: 7128

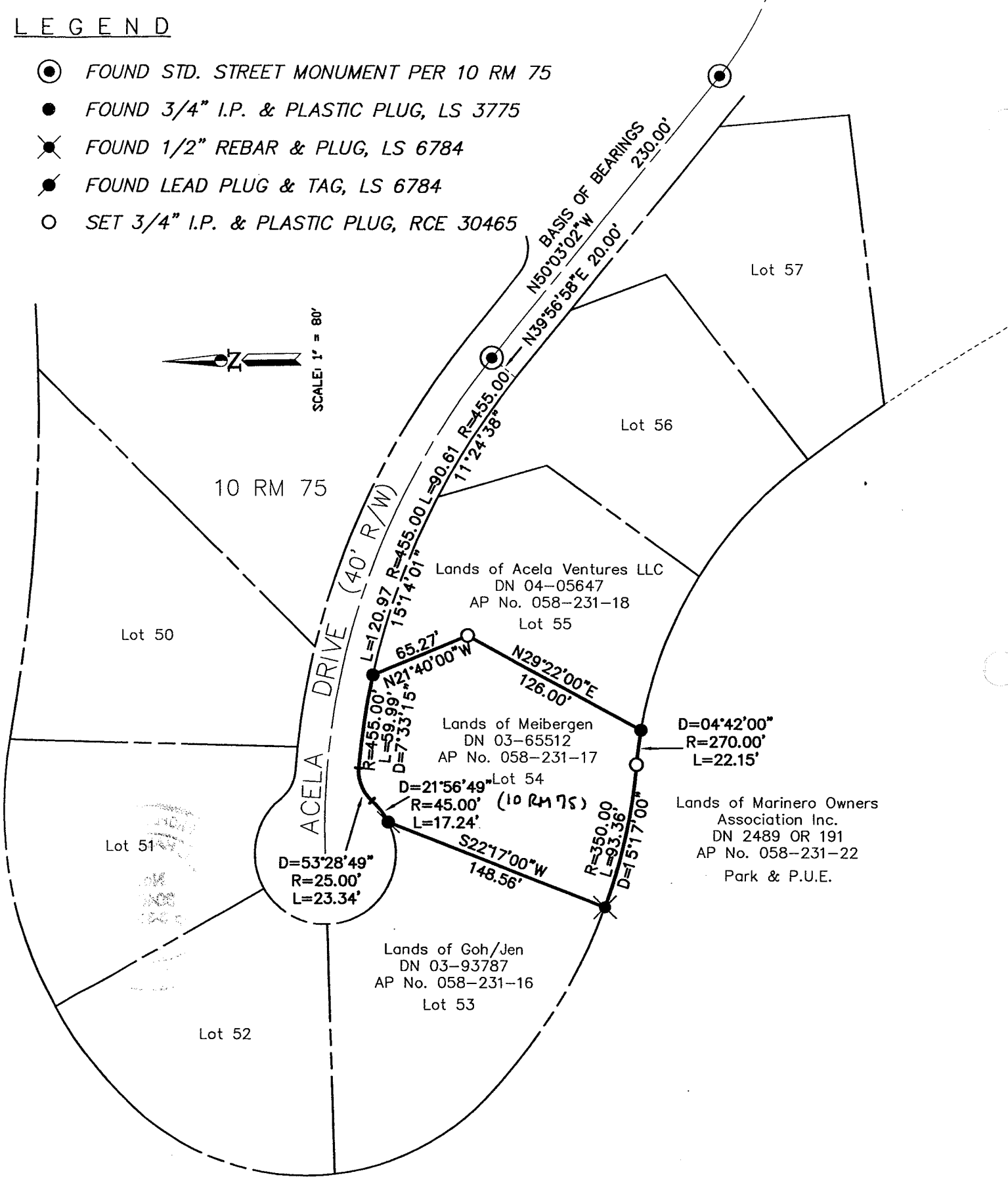
Title COUNTY SURVEYOR

County Surveyor's Comment \_\_\_\_\_



# LEGEND

- ⊙ FOUND STD. STREET MONUMENT PER 10 RM 75
- FOUND 3/4" I.P. & PLASTIC PLUG, LS 3775
- ✕ FOUND 1/2" REBAR & PLUG, LS 6784
- ⦿ FOUND LEAD PLUG & TAG, LS 6784
- SET 3/4" I.P. & PLASTIC PLUG, RCE 30465



Note: All distances are in feet and decimals thereof.

SHEET	1	OF	1
SCALE:	1" = 80'	DESIGN:	MDH
DATE:	2/3/05	DRAWN:	MDH
FILE:	2005-022	CHECKED:	J.L.H
\\Land Projects\2005-022\dwg\CorRec.dwg			

**J.L. ENGINEERING**  
**CIVIL ENGINEERS—LAND SURVEYORS**  
 1539 4th ST., SAN RAFAEL, CA. 94901 (415) 457-6647

## Corner Record

Lands of Meibergen - 15 Acela Drive  
 APN 058-231-17, Tiburon, Marin County, CA