

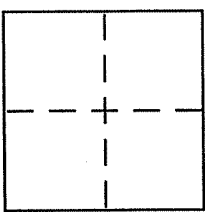
CORNER RECORD

Document Number APN 058-231-08

City of Tiburon

County of Marin, California

Brief Legal Description Lot 45 of 10 Maps 75



CORNER TYPE

Government Corner Control
Meander Property
Rancho Other
Date of Survey May 29, 2009

COORDINATES (Optional)

N. _____
E. _____
Zone _____ NAD27 NAD83
NAD83 Epoch _____
Elev. _____
Vert. Datum: NGVD29 NAVD88
Meas. Units: Metric Imperial

Corner - Left as found Found and tagged Established Reestablished Rebuilt

Identification and type of corner found: Evidence used to identify or procedure used to establish or reestablish the corner:

See page 2 of 2

A description of the physical condition of the monument as found and as set or reset:

See page 2 of 2

SURVEYOR'S STATEMENT

This Corner Record was prepared by me or under my direction in conformance with the Land Surveyor's Act on 8/10 2009

Signed [Signature] P.L.S or R.C.E. No. 6784



COUNTY SURVEYOR'S STATEMENT

This Corner Record was received 8-14-2009

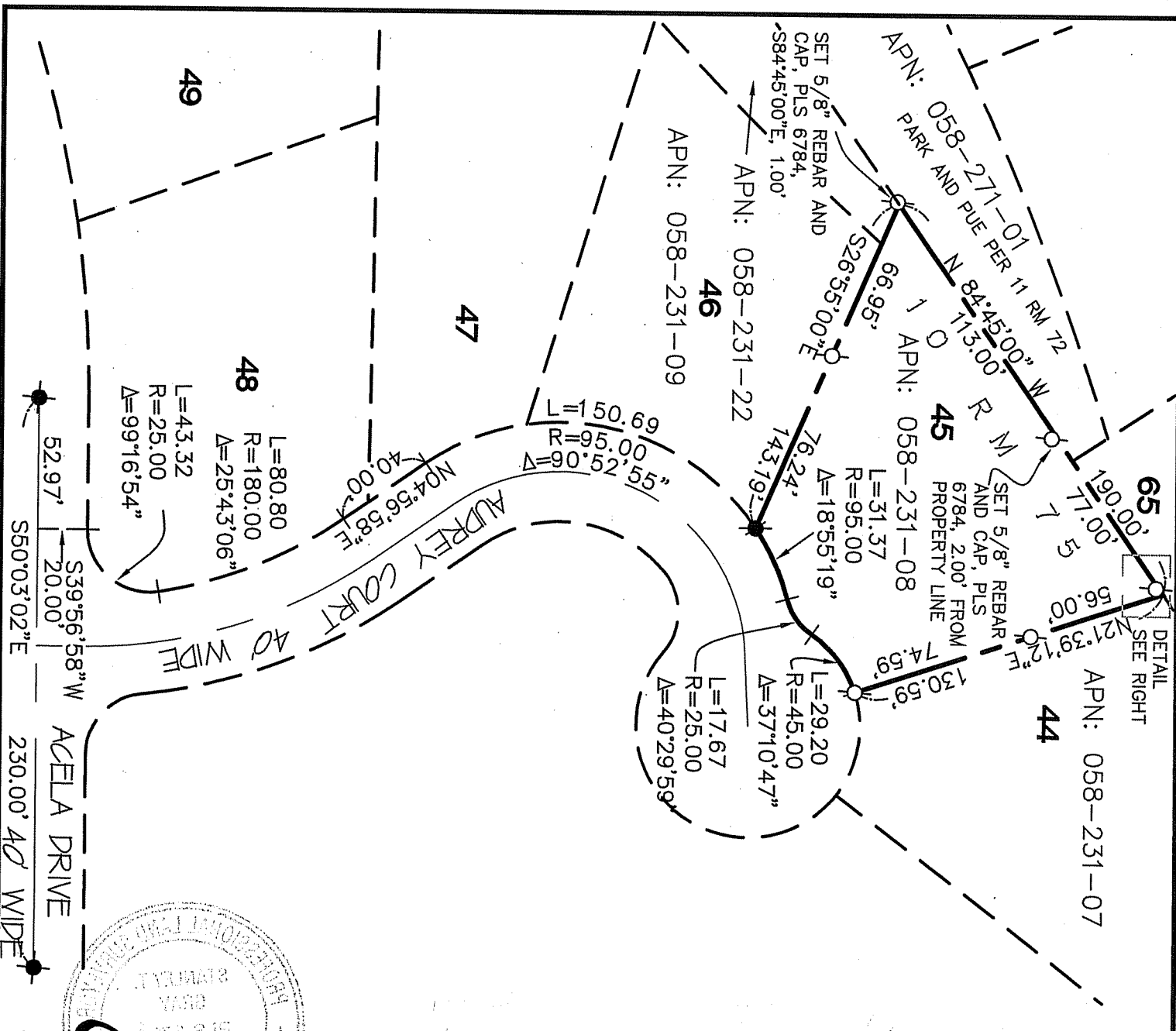
and examined and filed 8-18-2009

Signed [Signature] P.L.S or R.C.E. No. 7128

Title COUNTY SURVEYOR



County Surveyor's Comment _____



DETAIL
SEE RIGHT

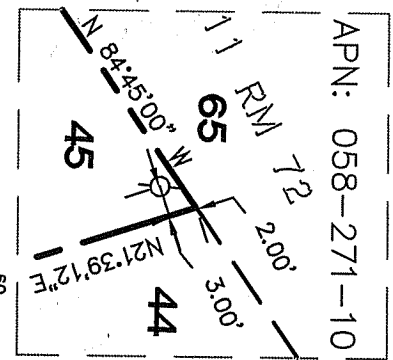
APN: 058-231-07
44

APN: 058-231-08
45
SET 5/8" REBAR AND CAP, PLS 6784, 2.00' FROM PROPERTY LINE

APN: 058-231-22
46

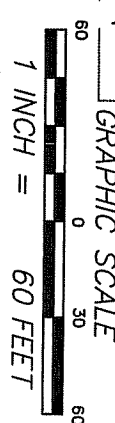
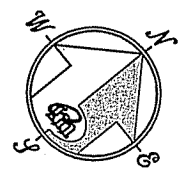
APN: 058-231-09
48
L=80.80
R=180.00
A=25°43'06"

APN: 058-231-09
49
L=43.32
R=25.00
A=99°16'54"



DETAIL NO SCALE

APN: 058-271-10
65



REFERENCE

"MAP OF MARINERO RESIDENCE NO. 1" FILED FOR RECORD SEPTEMBER 7, 1960 IN VOLUME 10 OF MAPS, AT PAGE 75, MARIN COUNTY RECORDS.

LEGEND

- FOUND 1" IP AND CAP PLS 3775
- SET 5/8" REBAR WITH CAP, PLS 6784

NOTE
RECORD=MEASURED

CORNER RECORD



MERRIDIAN SURVEYING ENGINEERING, INC.
1812 UNION STREET
SAN FRANCISCO, CA 94133
(415) 440-4131
08076
777 GRAND AVENUE, SUITE 202
SAN RAFAEL, CA 94901
(415) 456-5400
Info@merridiansurveying.com