

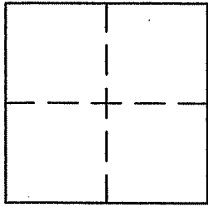
CORNER RECORD

Document Number APN 058-201-26

City of TIBURON

County of MARIN, California

Brief Legal Description LOT 16, 10 RM 102



CORNER TYPE

Government Corner Control
Meander Property
Rancho Other
Date of Survey 6-10-10

COORDINATES (Optional)

N. _____
E. _____
Zone _____ NAD27 NAD83
NAD83 Epoch _____
Elev. _____
Vert. Datum: NGVD29 NAVD88
Meas. Units: Metric Imperial

Corner - Left as found Found and tagged Established Reestablished Rebuilt

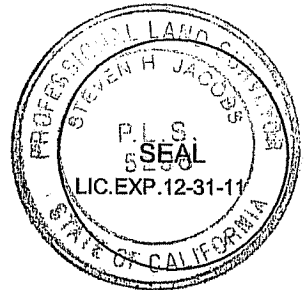
Identification and type of corner found: Evidence used to identify or procedure used to establish or reestablish the corner:
FOUND STANDARD STREET MONUMENTS AS SHOWN ON 10 RM 102 AND ON CORNER RECORD APN 058-201-26
AND ON REVERSE

A description of the physical condition of the monument as found and as set or reset: _____
SET HUBS & TAGS, PLS 5296 LINE POINTS AS SHOWN ON REVERSE

SURVEYOR'S STATEMENT

This Corner record was prepared by me or under my direction in conformance with
the Land Surveyor's Act on JUNE 22, 2010

Signed [Signature] P.L.S. or R.C.E. No. PLS 5296



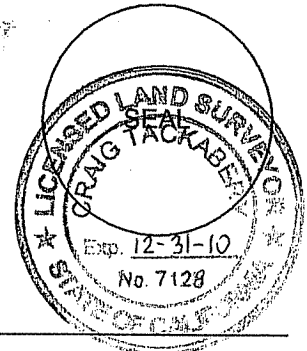
COUNTY SURVEYOR'S STATEMENT

This Corner Record was received JULY 1, 2010
and examined and filed AUGUST 3, 2010

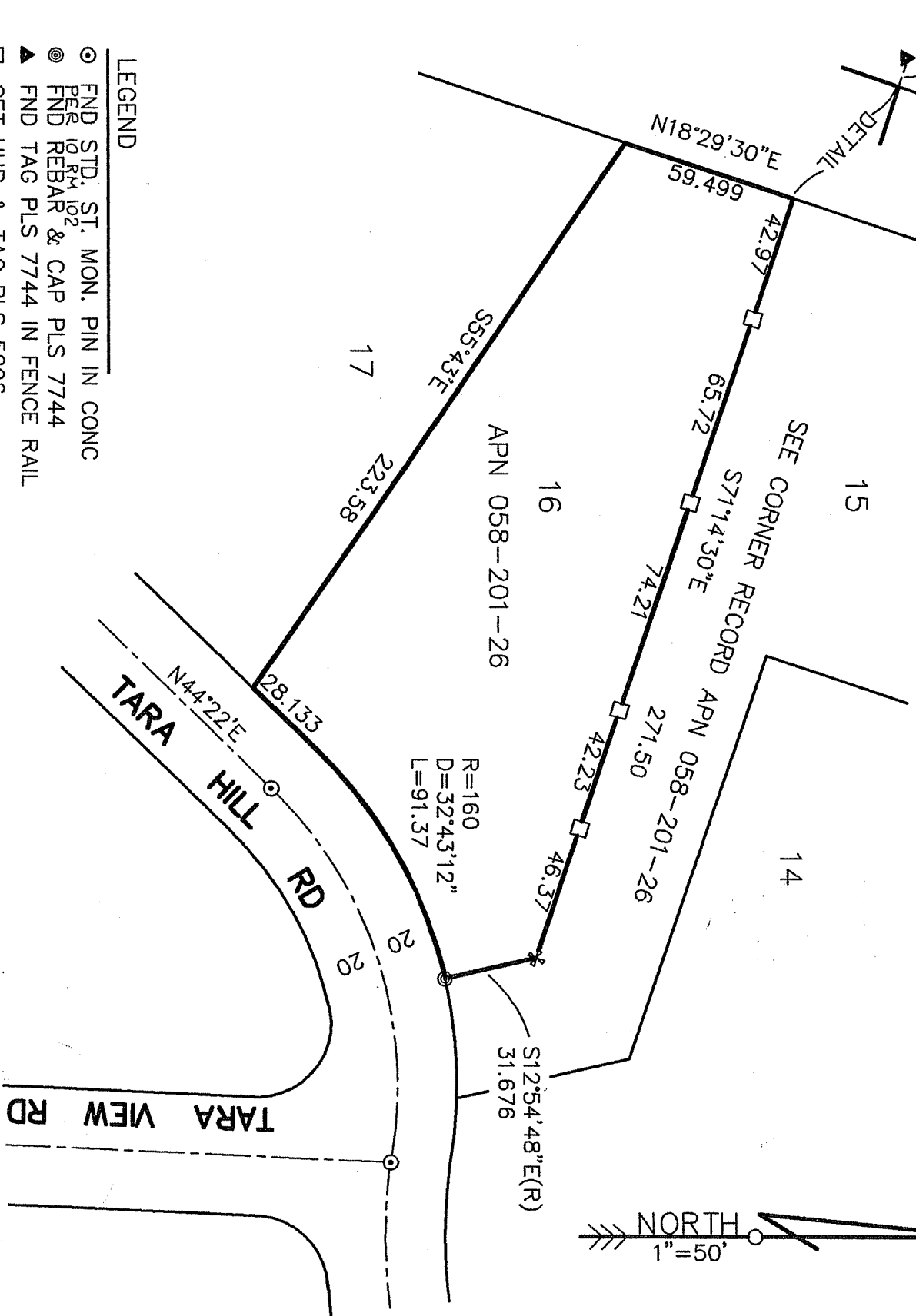
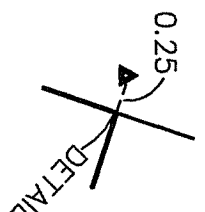
Signed [Signature] P.L.S. or R.C.E. No. 7128

Title COUNTY SURVEYOR

County Surveyor's Comment _____



MAP OF TARA HILL
10 RM 102



- LEGEND**
- FND STD. ST. MON. PIN IN CONC
 - ⊙ PER 10 RM 102 & CAP PLS 7744
 - ⊙ FND REBAR & CAP PLS 7744
 - ▲ FND TAG PLS 7744 IN FENCE RAIL
 - SET HUB & TAG PLS 5296
 - ⊕ SET "+" IN CONCRETE DRIVEWAY
 - (R) RADIAL BEARING