

CORNER RECORD

DPW# 18-041

Agency Index

Document Number A.P. 058-201-19

TOWN OF TIBURON

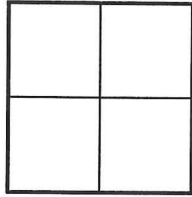
County of MARIN

, California

Brief Legal Description LOT 9 10 R.M. 102

CORNER TYPE

COORDINATES(Optional)



Government Corner Control
 Meander Property
 Rancho Other

N. _____ E. _____
 Elevation _____
 Units Metric U.S. Survey Foot
 Horizontal Datum _____
 Zone _____ Epoch Date _____
 Vertical Datum _____

Date of Survey 3/26/01

Complies with Public Resources Code §§8801-8819
 Complies with Public Resources Code §§8890-8902

PLS Act Ref.: 8765(d) 8771 8773 Other:
 Corner/Monument: Left as found Established Rebuilt Pre-Construction
 Found and tagged Reestablished Referenced Post-Construction

Narrative of corner identified and monument as found, set, reset, replaced, or removed:
 See sheet #2 for description(s):

SET THE BOUNDRY CORNER OF LOT 9 10 R.M. 102 FROM STREET MONUMENTS

SURVEYOR'S STATEMENT

This Corner Record was prepared by me or under my direction in conformance with
 the Professional Land Surveyors' Act on JUNE 18, 2018

Signed Lawrence P. Doyle P.L.S. No. 4694



COUNTY SURVEYOR'S STATEMENT

This Corner Record was received JUNE 25, 2018

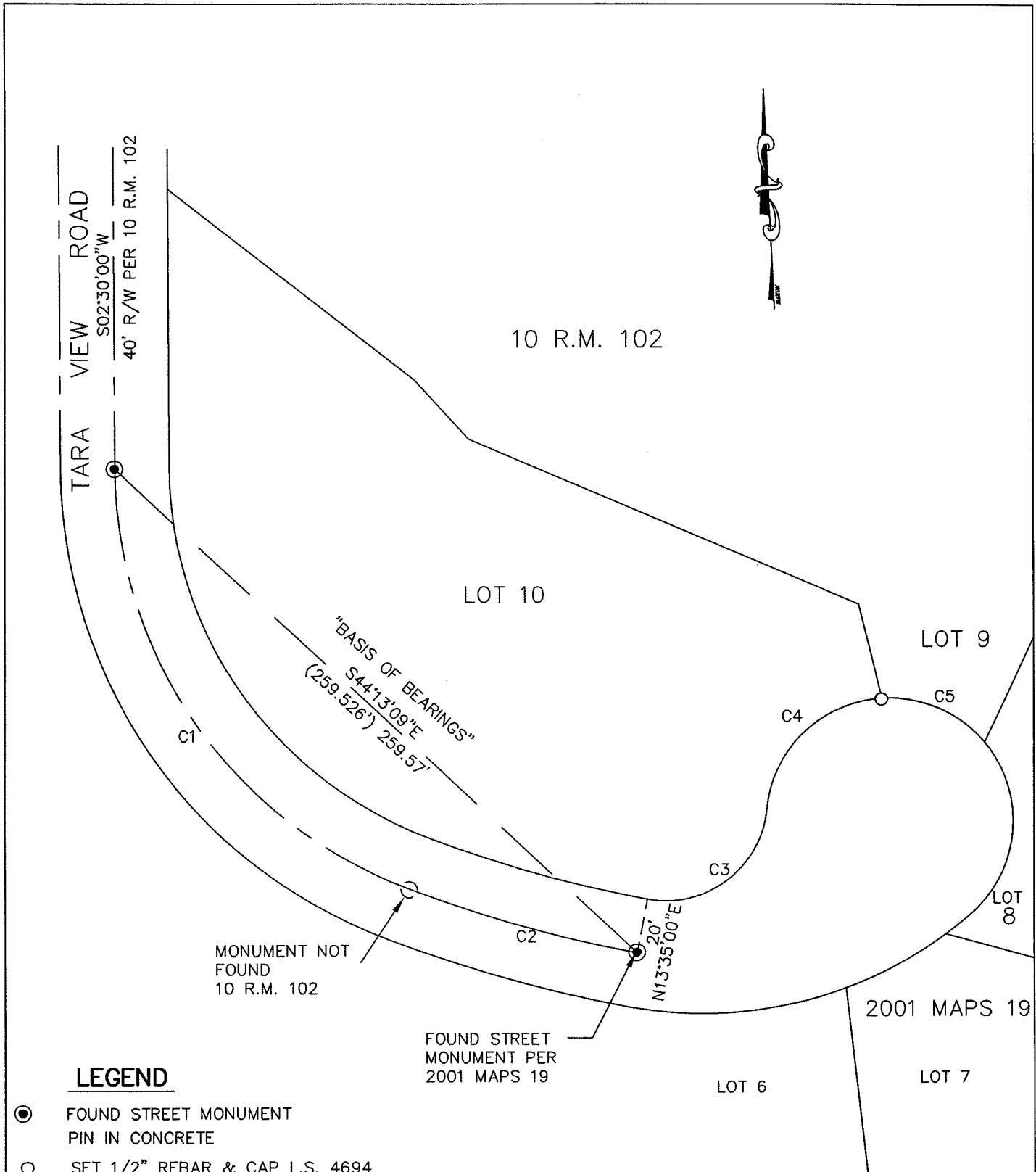
and examined and filed JULY 30, 2018

Signed [Signature] P.L.S. or R.C.E. No. 9292

Title DEPUTY C.S.

County Surveyor's Comment





LEGEND

- FOUND STREET MONUMENT
PIN IN CONCRETE
- SET 1/2" REBAR & CAP L.S. 4694

CURVE TABLE			
CURVE	ANGLE	LENGTH	RADIUS
C1	69°00'00"	198.706'	165.000'
C2	9°55'00"	86.539'	500.000'
C3	95°16'46"	61.093'	36.738'
C4	80°48'13"	63.463'	45.000'
C5	54°10'42"	42.552'	45.000'



CORNER RECORD		
LOT 9 10 R.M 102		
TIBURON MARIN COUNTY CALIFORNIA		
SCALE: 1"=50'	LAWRENCE P. DOYLE	DRAWN BY:
DATE: 6-18		SHEET 2 OF 2
LAND SURVEYOR/CIVIL ENGINEER		
100 HELENS LANE MILL VALLEY CA 94941 (415-388-9585)		
		DRAWING NO. 919