

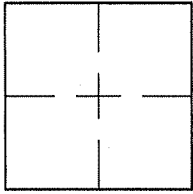
CORNER RECORD

Document Number A.P.# 058-141-14

City of TIBURON

County of MARIN, California

Brief Legal Description 8 R.M. 11, LOT 7



CORNER TYPE COORDINATES (Optional)

Government Corner Control

Meander Property

Rancho Other

Date of Survey 5/11/05

N. _____
 E. _____
 Zone _____ NAD27 NAD83
 NAD83 Epoch _____
 Elev. _____
 Vert. Datum: NGVD29 NAVD88
 Meas. Units: Metric Imperial

Corner- Left as found Found and tagged Established Reestablished Rebuilt

Identification and type of corner found: Evidence used to identify or procedure used to establish or reestablish the corner:

REESTABLISHED PROPERTY LINE AND SET 3 PIPES/PLUGS 4694 ON PROPERTY LINE
FROM FOUND STREET MONUMENTS (SEE SHEET 2)

A description of the physical condition of the monument as found and as set or reset: SEE SHEET 2.

SURVEYOR'S STATEMENT

This Corner Record was prepared by me or under my direction in conformance with

the Land Surveyor's Act on AUGUST 30 2005

Signed Lawrence P. Doyle P.L.S. or R.C.E. No. P.L.S. 4694



COUNTY SURVEYOR'S STATEMENT

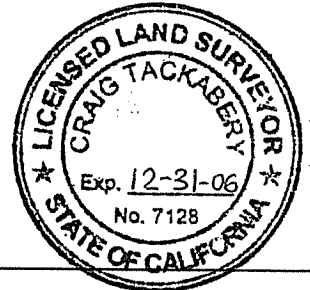
This Corner Record was received SEPTEMBER 6, 2005

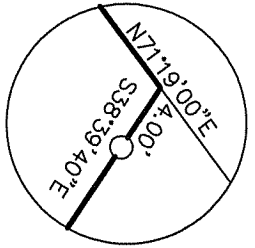
and examined and filed OCTOBER 4, 2005

Signed [Signature] P.L.S. or R.C.E. No. 7128

Title CO. SURVEYOR

County Surveyor's Comment _____



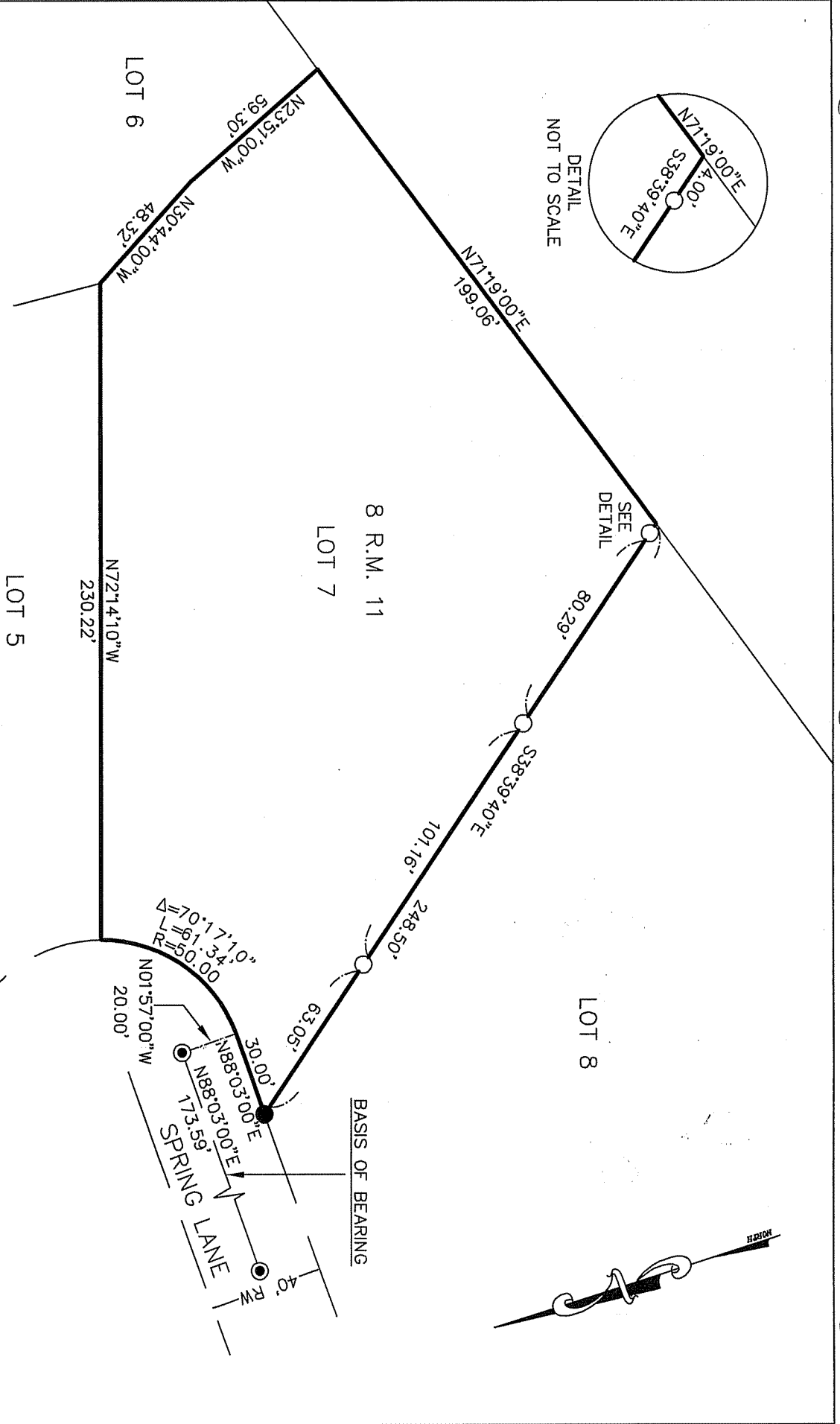


DETAIL
NOT TO SCALE

SEE
DETAIL

LOT 8

BASIS OF BEARING



- LEGEND**
- FOUND STREET MONUMENT
 - SET 3/4" PIPE & PLUG
 - FOUND PIPE & PLUG
- BASIS OF BEARING**
- THE BASIS OF BEARING IS
N88°03'00"E BETWEEN FOUND
STREET MONUMENTS ON
SPRING LANE PER 8 R.M. 11

CORNER RECORD	
LOT 8 R.M. 11	
MARIN COUNTY, CALIFORNIA	
SCALE: 1" = 50'	TIBURON
DATE: 8/30/05	LAWRENCE P. DOYLE
LAND SURVEYOR/CIVIL ENGINEER	
P.O. BOX 1609 MILL VALLEY, CA 94942 (415-388-9585)	
DRAWN BY: JMH	SHEET 1 OF 1
DRAWING NO. 1417-05	

