

CORNER RECORD

APN 058-132-24Document No. 11 RM 16City of TiburonCounty of Marin

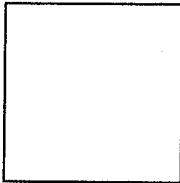
, California

Brief Legal Description Lot 16, 11 RM 16

CORNER TYPE

COORDINATES

(Optional)

Government Corner ☐Control ☐Meander ☐Property ☒Rancho ☐Other ☐Date of Survey July 13, 2005

N. _____

E. _____

Zone _____ Datum _____

Elev. _____

Corner- Left as found ☐ Found and tagged ☐ Established ☒ Reestablished ☐ Rebuilt ☐

Identification and type of corner found: Evidence used to identify or procedure to establish or reestablish the corner: Established property corners on Lot 16 per found std. street monuments as shown on herein sht. 2 and per "Map of Rolling Hills Unit Two", recorded in Vol. 11 of Maps, Page 16, and per "Map of Rolling Hills", recorded in Vol. 8 of Maps, Page 11, County of Marin.

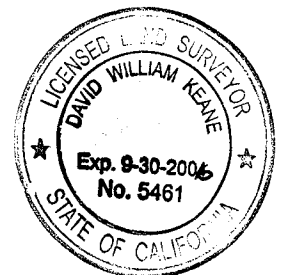
A description of the physical condition of the monument as found and as set or reset:

Set 1/2" bar w/ plastic cap, LS 5461 and nail & tag LS 5461 at locations shown on herein sht. 2. Found 3/4" iron pipe w/ plastic cap, LS 6649 and standard street monuments, at locations shown on herein sht. 2.

SURVEYOR'S STATEMENT

This Corner Record was prepared by me or under my direction in conformance with the Land Surveyors Act on July 19, 2005.

Signed [Signature] PLS Number 5461

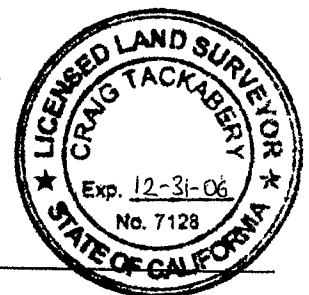


COUNTY SURVEYOR'S STATEMENT

This Corner Record was received JULY 21, 2005 and examined and filed AUGUST 25, 2005.

Signed [Signature] Title COUNTY SURVEYOR

County Surveyor's Comments _____



NOTE:

1. ALL DIMENSIONS SHOWN HEREIN ARE PER 11 RM 16 UNLESS OTHERWISE NOTED.
2. ALL DISTANCES AND DIMENSIONS ARE IN FEET AND DECIMALS THEREOF.
3. EASEMENTS IF ANY ARE NOT SHOWN.
4. APN. 58-132-24.

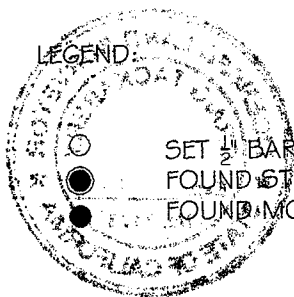
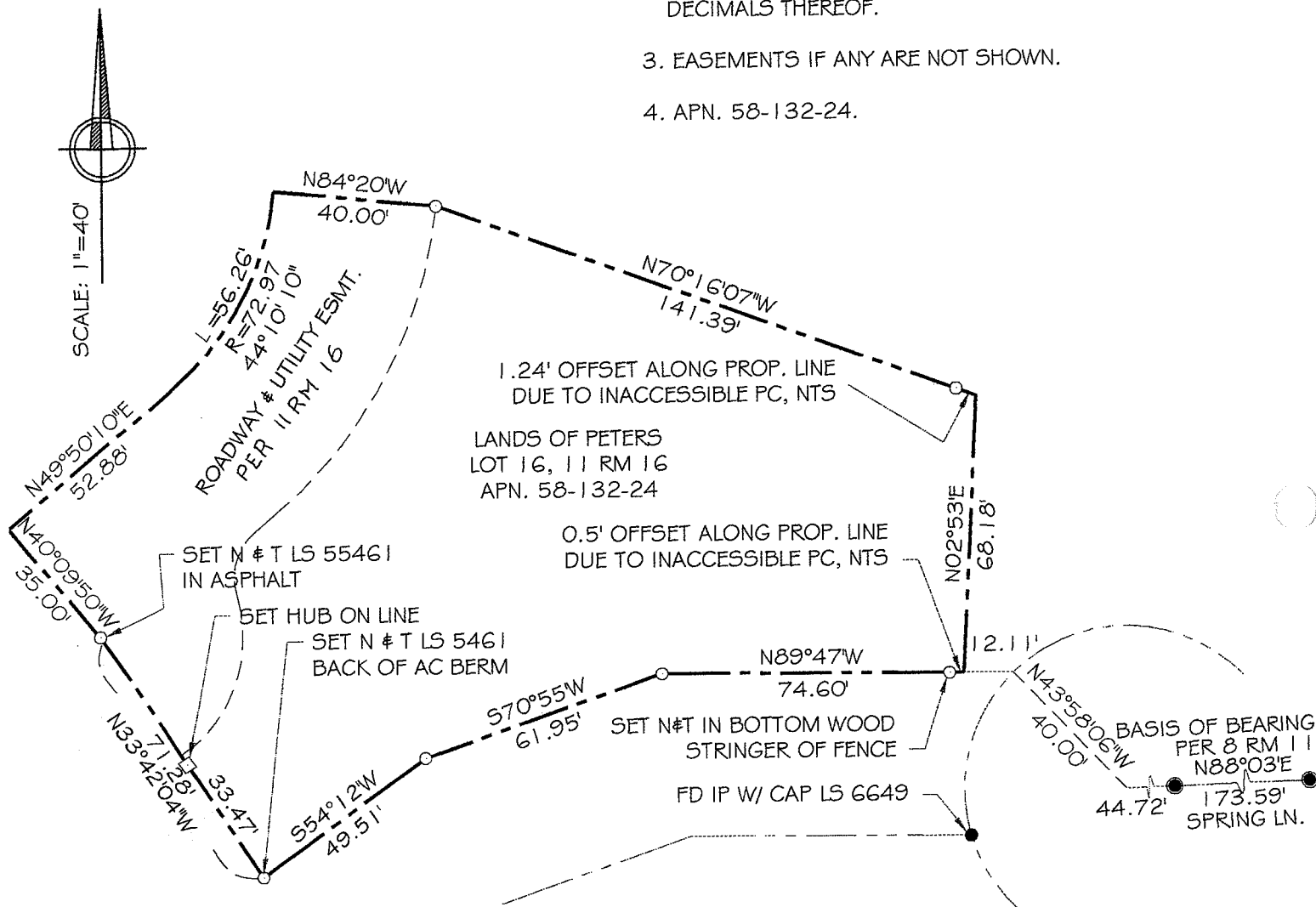


EXHIBIT "A"

BRACKEN & KEANE

Civil Engineers & Land Surveyors

5710 Paradise Drive, Ste. 8

Corte Madera, CA 94925

tel: (415) 927-8801 fax: (415) 927-8803

07-05-27 DATE: 7/18/05

SHEET 2 OF 2