

# CORNER RECORD

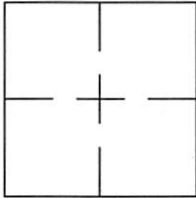
Agency Index DPW# 17-089

Document Number APN 058-121-25

City of TIBURON

County of MARIN, California

Brief Legal Description PARCEL C ON PARCEL MAP 2782 O.R. 627, BOOK 18 OF MAPS 75.



### CORNER TYPE

Government Corner  Control   
 Meander  Property   
 Rancho  Other

Date of Survey 09-20-2017

### COORDINATES (Optional)

N. \_\_\_\_\_ E. \_\_\_\_\_

Elevation \_\_\_\_\_

Units Metric  U.S. Survey Foot

Horizontal Datum \_\_\_\_\_

Zone \_\_\_\_\_ Epoch Date \_\_\_\_\_

Vertical Datum \_\_\_\_\_

Complies with Public Resources Code 8801-8819

Complies with Public Resources Code 8890-8902

PLS Act Ref:  8765(d)  8771  8773  Other: \_\_\_\_\_

Corner/Monument:  Left as found  Established  Rebuilt  Pre-Construction  
 Found and tagged  Reestablished  Referenced  Post-Construction

Narrative of corner identified and monument as found, set, reset, replaced, or removed:

See sheet #2 for description(s):

FOUND TWO 1/2" BRASS DISC IN GOOD CONDITION WITH TAG RCE 9626 IN A CONCRETE MONUMENT AND  
ONE TAGGED RCE 6135. FOUND 1/2" IRON PIPE WITH TAG 3971 IN CONCRETE. FOUND 3/4" IRON PIPE TAG  
ILLEGIBLE AND A PEBBLE SCORED WITH AN 'X' IN GOOD CONDITION AS SHOWN ON PARCEL MAP BOOK 18 OF  
MAPS PAGE 75 OF MARIN COUNTY RECORDS. FOUR 3/4" IRON PIPES WERE SET TAGGED A. RIVERA LS 8451  
ON RECORD CORNER OR OFFSET TO THE CORNER. SEE PAGE TWO FOR DETAILS.

### SURVEYOR'S STATEMENT

This Corner Record was prepared by me or under my direction in conformance with the Professional Land Surveyors' Act on DEC 4th, 2018.

Signed [Signature] P.L.S. or R.C.E. No. 8451



### COUNTY SURVEYOR'S STATEMENT

This Corner Record was received OCTOBER 3, 2017

and examined and filed JAN 31, 2019.

Signed [Signature] P.L.S. or R.C.E. No. 9292

Title DEPUTY C.S.

County Surveyor's Comment \_\_\_\_\_



1/2" BRASS DISC  
TAGGED LS 6135 PER CORNER  
RECORD APN: 058-121-26  
FILED 12/24/1998

PARCEL A  
18 PM 75

PARCEL C  
18 PM 75

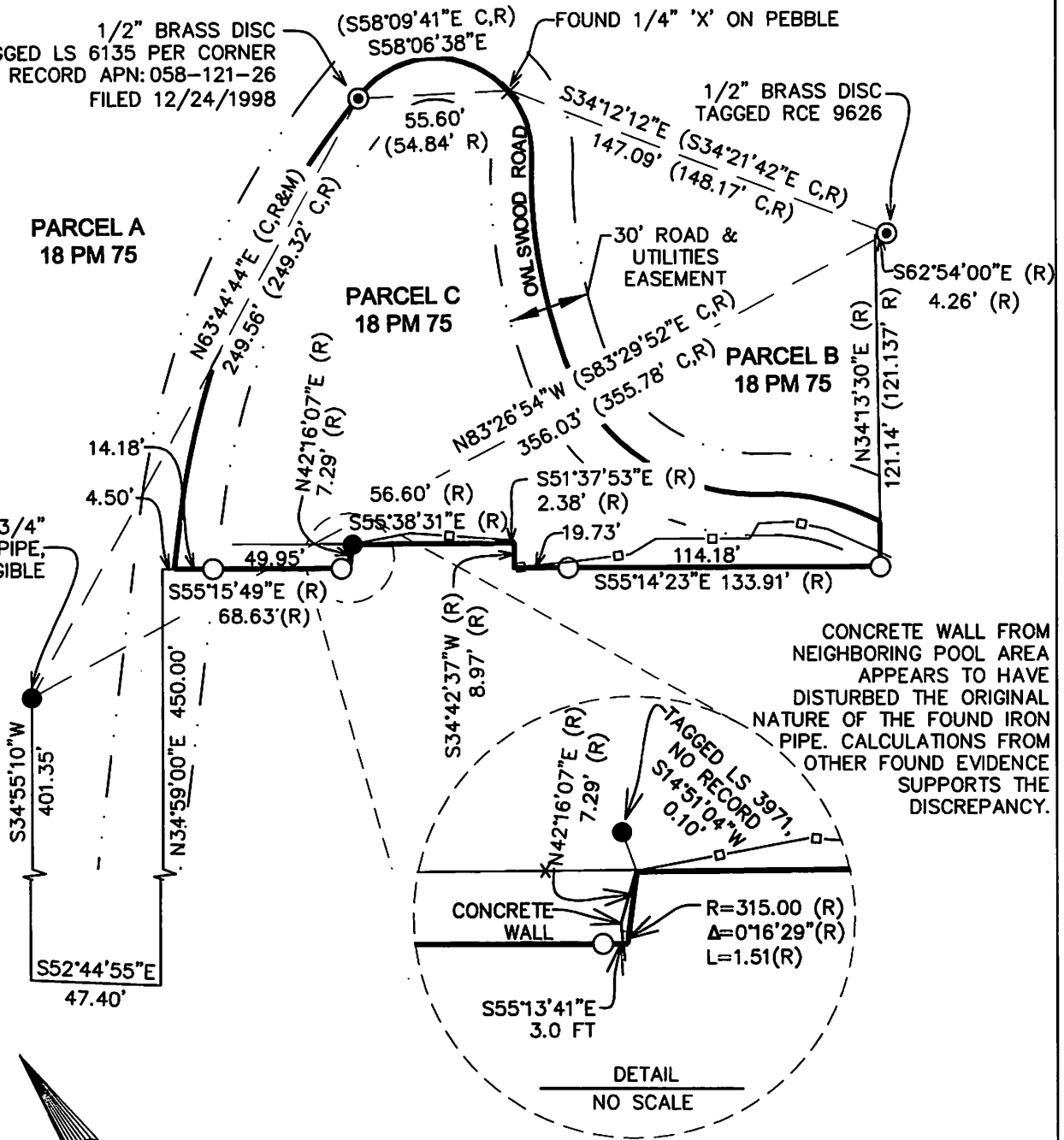
PARCEL B  
18 PM 75

FOUND 3/4"  
IRON PIPE,  
TAG ILLEGIBLE

FOUND 1/4" 'X' ON PEBBLE

1/2" BRASS DISC  
TAGGED RCE 9626

CONCRETE WALL FROM  
NEIGHBORING POOL AREA  
APPEARS TO HAVE  
DISTURBED THE ORIGINAL  
NATURE OF THE FOUND IRON  
PIPE. CALCULATIONS FROM  
OTHER FOUND EVIDENCE  
SUPPORTS THE  
DISCREPANCY.



LEGEND

- BOUNDARY LINE
- ADJOINING BOUNDARY LINE
- EASEMENT LINE
- SURVEY TIE
- SET 1/2" IRON PIPE, TAGGED LS 8451
- FOUND 1/2" IRON PIPE FOUND, TAGGED AS NOTED
- ⊙ FOUND 1/2" BRASS DISK IN PAVEMENT
- C CALCULATED
- (R) RECORDED DATA, 18 PM 75

**HOGAN LAND SERVICES**  
A CALIFORNIA CORPORATION