

# CORNER RECORD

Agency Index

CR22-094

Document Number

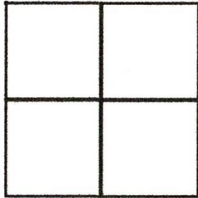
**055-222-04**City of Tiburon

County of

Marin

, California

Brief Legal Description

Lot 7 per 6 RM 29, Marin County Records**CORNER TYPE**

Government Corner ☐ Control ☐  
Meander ☐ Property ☒  
Rancho ☐ Other ☐

Date of Survey July 20, 2022**COORDINATES (Optional)**

N. \_\_\_\_\_ E. \_\_\_\_\_  
Elevation \_\_\_\_\_  
Units Metric ☐ U.S. Survey Foot ☐  
Horizontal Datum \_\_\_\_\_  
Zone \_\_\_\_\_ Epoch Date \_\_\_\_\_  
Vertical Datum \_\_\_\_\_

☐ Complies with Public Resources Code §§8801-8819  
☐ Complies with Public Resources Code §§8890-8902

PLS Act Ref: ☒ 8765(d) ☐ 8771 ☐ 8773 ☐ Other:

Corner/Monument: ☐ Left as found ☐ Established ☐ Rebuilt ☐ Pre-Construction  
☐ Found and tagged ☒ Reestablished ☒ Referenced ☐ Post-Construction

Narrative of corner identified and monument as found, set, reset, replaced, or removed:

☒ See sheet #2 for description (s):**SURVEYOR'S STATEMENT**

This Corner Record was prepared by me or under my direction in conformance with  
the Professional Land Surveyors' Act on July 28, 2022

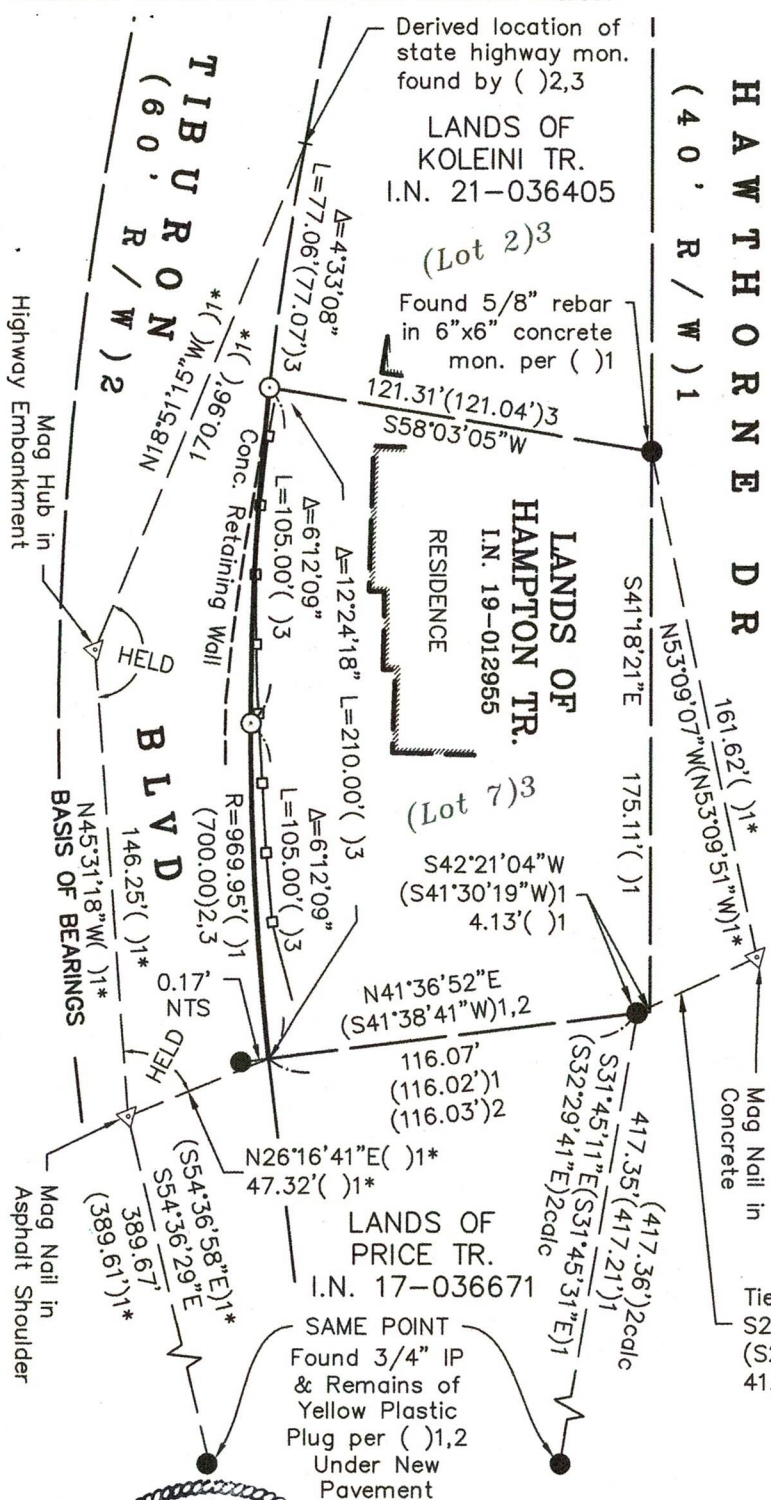
Signed [Signature] P.L.S. or R.C.E. No. 6649**COUNTY SURVEYOR'S STATEMENT**

This Corner Record was received July 28, 2022  
and examined and filed August 02, 2022

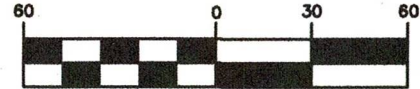
Signed T.W. Park P.L.S. No. 8176Title County Surveyor

County Surveyor's Comment \_\_\_\_\_

All distances shown are in feet and decimals thereof



## GRAPHIC SCALE



( IN FEET )

## LEGEND

- Found 3/4" Iron Pipe With Nail in Yellow Plastic Plug Stamped "RCE 30465", UNO
- Set 5/8" Rebar & Punched 1 1/2" Aluminum Cap, Stamped "LA STEVENS PLS 6649"
- △ Found Control Point, as Noted, with 1.5" Aluminum Washer Stamped "L.A. STEVENS CONTROL"

NTS Not to Scale

Wood Fence

( ) 1 2019 RS 120, filed 12/6/2019

( ) 2 2003 RS 129, filed 5/21/2003

( ) 3 6 RM 29, 4/18/1947

( ) 1\* Record dimensions per L.A. Stevens &amp; Associates control data for job #181891

calc Calculated per record map

UNO Unless Noted Otherwise

Tie to Mon.:  
 S23°41'19"W  
 (S23°37'33"W) 1\*  
 41.13'(41.19') 1\*

NOTE: See 2019 RS  
 120 for additional  
 information in area.

## CORNER RECORD LANDS OF HAMPTON TRUST

(SW'ly Line of Lot 7, 6 RM 29)

TOWN OF TIBURON

MARIN COUNTY

CALIFORNIA

SCALE: 1" = 60'

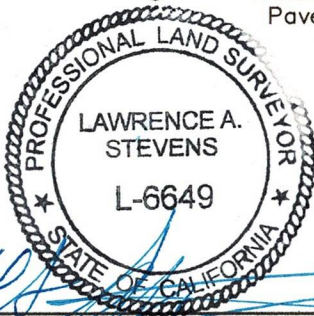
JULY 28, 2022

L.A. Stevens &amp; Associates, Inc.

Professional Land Surveyors \* (415) 382-7713

7 Commercial Blvd., Suite 1 \* Novato, CA 94949

Job # 222223



Lawrence A. Stevens, PLS 6649

Copyright © Lawrence A. Stevens 2022