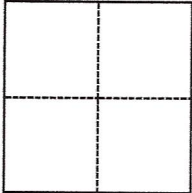


# CORNER RECORD

Agency Index CR 23-013Document Number APN 055-211-03City of Tiburon County of Marin, CaliforniaBrief Legal Description Lot 24 of Hawthorne Terrace Unit 3, 8 RM 7, MCR**CORNER TYPE****COORDINATES (Optional)**

- ☐ Government Corner ☐ Control  
☐ Meander ☒ Property  
☐ Rancho ☐ Other

Date of Survey February 6, 2023

N. \_\_\_\_\_ E. \_\_\_\_\_

Elevation \_\_\_\_\_

Units ☐ Metric ☐ U.S. Survey Foot

Horizontal Datum \_\_\_\_\_

Zone \_\_\_\_\_ Epoch Date \_\_\_\_\_

Vertical Datum \_\_\_\_\_

☐ Complies with Public Resources Code §§8801-8819☐ Complies with Public Resources Code §§8890-8902PLS Act Ref.: ☒ 8765(d) ☐ 8771 ☐ 8773 ☐ Other:

Corner/  
Monument: ☐ Left as found ☒ Established ☐ Rebuilt ☐ Pre-Construction  
☐ Found and tagged ☐ Reestablished ☐ Referenced ☐ Post-Construction

Narrative of corner identified and monument as found, set, reset, replaced, or removed:

☒ See sheet #2 for description(s):

Found center line monuments matching record as shown on 2019 Maps 120, set 5/8-inch rebar at north corner and at 37 feet from corner; set south corner with brass nail & tag in concrete step and at 17 feet from northwest corner in top of wood retaining wall as shown on Page 2.

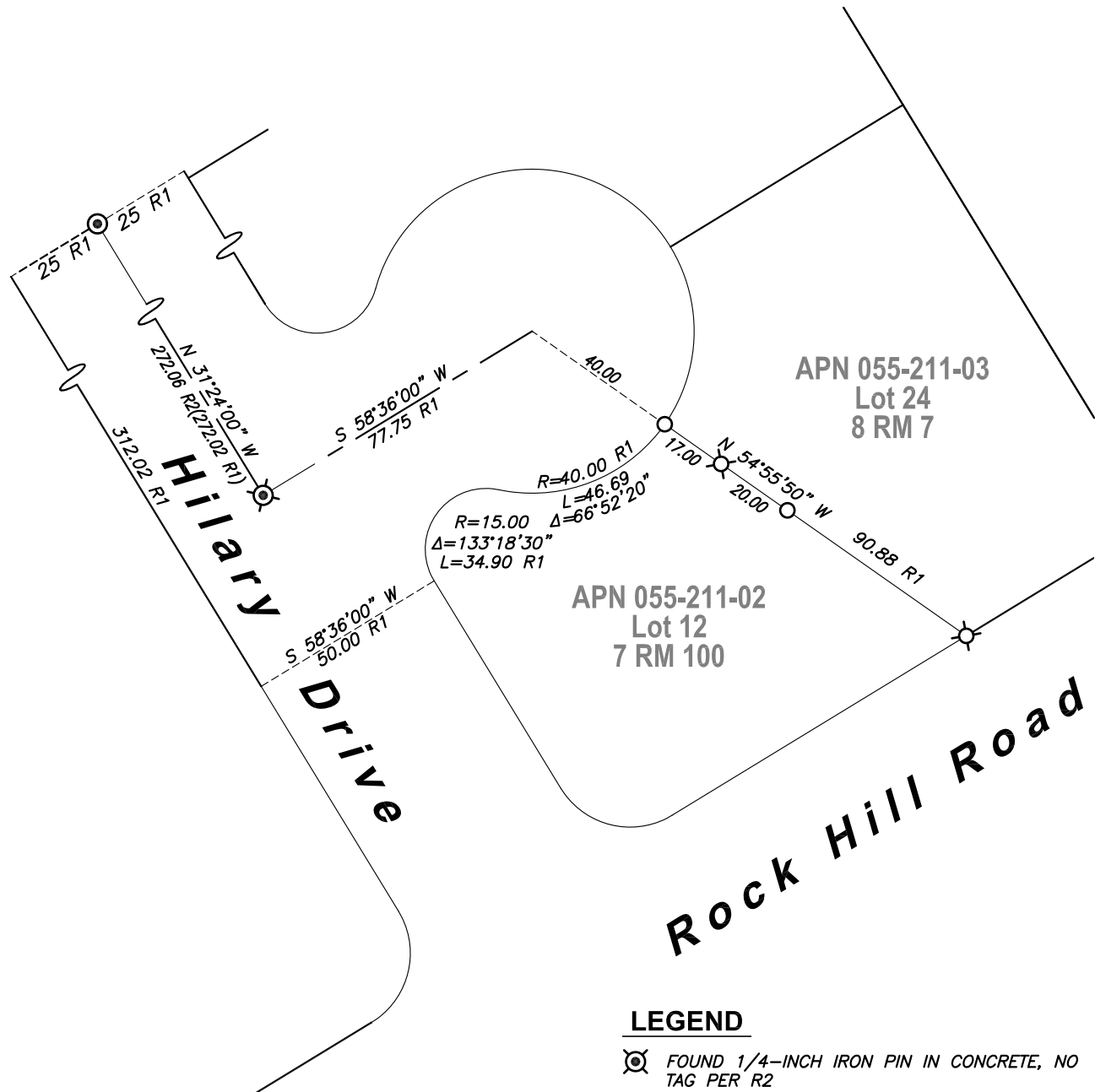
**SURVEYOR'S STATEMENT**

This Corner Record was prepared by me or under my direction in conformance with

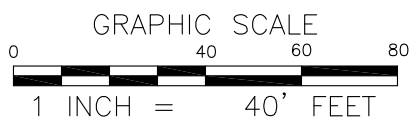
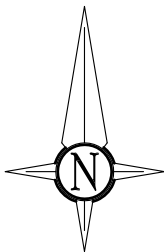
the Professional Land Surveyors' Act on February 6, 2023Signed [Signature] P.L.S. or R.C.E. No. 7950**COUNTY SURVEYOR'S STATEMENT**This Corner Record was received February 20, 2023and examined and filed February 21, 2023Signed T.W. Park P.L.S. [Redacted] No. 8176Title County Surveyor

County Surveyor's Comment



**LEGEND**

- ⊗ FOUND 1/4-INCH IRON PIN IN CONCRETE, NO TAG PER R2
- ⊙ FOUND 2" BRASS DISK, RE 3230 PER R1
- SET 5/8-INCH REBAR, YELLOW CAP PLS 7950
- ⊗ SET BRASS NAIL & TAG, PLS 7950
- R1 MAP OF HAWTHORNE TERRACE, UNIT THREE, FILED IN BOOK 8 OF RECORD MAPS, AT PAGE 7, MARIN COUNTY RECORDS
- R2 RECORD OF SURVEY, FILED IN BOOK 2019 OF MAPS, AT PAGE 120, MARIN COUNTY RECORDS



J:\22416-AllenGoebe\DWG\22416CR.dwg

**1031Survey, Inc.**

HighDefinitionSurveying  
 1857 Rainier Circle, Petaluma, California, 94954  
 415-827-6370