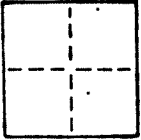


A.P. #55-191-04

CORNER RECORD

1 of 4

COUNTY OF MARIN T. _____ R. _____ MERIDIAN _____ CALIFORNIA
 CORNER TYPE: GOVT. CORNER ☐ MEANDER ☐ RANCHO ☐ CONTROL ☐ OTHER ☐
 CORNER IDENTIFICATION — DATE OF VISIT 12-14 1988



CORNER — LEFT AS FOUND ☐ FOUND AND TAGGED ☐ REESTABLISHED OBLITERATED CORNER ☐ REBUILT ☐

PHYSICAL DESCRIPTION OF CORNER FOUND; EVIDENCE AND METHOD USED TO IDENTIFY OR REESTABLISH

BASED ON FOUND MONUMENTS AS SHOWN ON "MAP OF HAWTHORNE TERRACE"
 FILED IN BOOK 6 OF MAPS AT PAGE 22, MARIN COUNTY RECORDS.

AP# 55-191-04

PHYSICAL DESCRIPTION OF MONUMENTS REBUILT OR PERPETUATED

SET 3/4" I.P. WITH PLASTIC CAP, TAG NO. 5814.

CALIFORNIA COORDINATE SYSTEM ORDER: FIRST ☐ SECOND ☐ THIRD ☐
 STATIONS USED: NGS (USC & GS) ☐ STATE ☐ COUNTY ☐ OTHER ☐ STATION _____ STATION _____
 ZONE _____ ELEVATION _____ NORTHINGS (Y) _____ EASTINGS (X) _____

SKETCH: (Include reference tie or witness points, remarks and topo of area)



SURVEYOR'S CERTIFICATE

THIS CORNER RECORD WAS PREPARED BY ME OR UNDER MY
 DIRECTION IN CONFORMANCE WITH THE LAND SURVEYORS ACT

ON

SIGNED: William E. Schaefer

L.S. & R.C. No.:

No. 5814

COUNTY SURVEYOR'S CERTIFICATE

THE CORNER RECORD WAS RECEIVED 2/16 1989

C 302 AND EXAMINED AND FILED 2/16 1989

Exp. 3-31-92 BY: RDS

TITLE: PCS

DOCUMENT No.

REPLACEMENT ON BACK OF SHEET

SEAL

YES ☐NO ☐

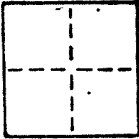
CORNER RECORD

2 of 4

COUNTY OF MARIN T. R. MERIDIAN CALIFORNIA

CORNER TYPE: GOVT. CORNER ☐ MEANDER ☐ RANCHO ☐ CONTROL ☐ OTHER ☐

CORNER IDENTIFICATION — DATE OF VISIT 12-14 19 88.



CORNER — LEFT AS FOUND ☐ FOUND AND TAGGED ☐ REESTABLISHED OBLITERATED CORNER ☐ REBUILT ☐

PHYSICAL DESCRIPTION OF CORNER FOUND; EVIDENCE AND METHOD USED TO IDENTIFY OR REESTABLISH

BASED ON FOUND MONUMENTS AS SHOWN ON "MAP OF HAWTHORNE TERRACE"
FILED IN BOOK 6 OF MAPS AT PAGE 22, MARIN COUNTY RECORDS.

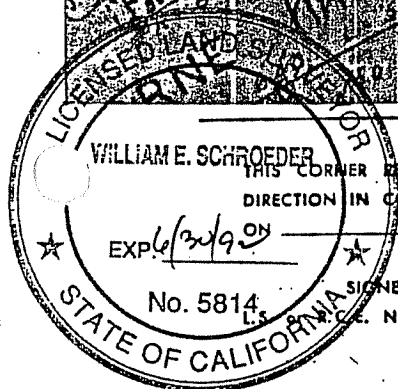
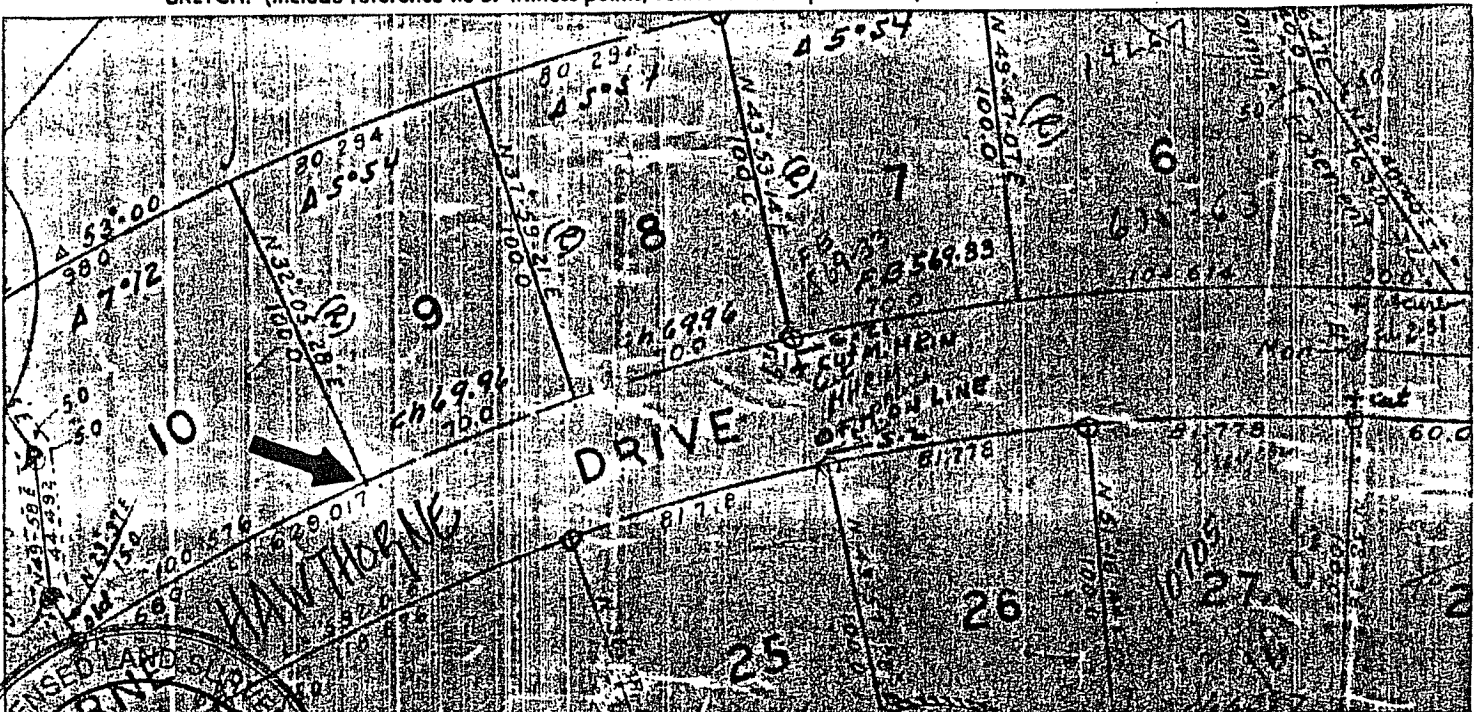
AP# 55-191-04

PHYSICAL DESCRIPTION OF MONUMENTS. REBUILT OR PERPETUATED

SET 3/4" I.P. WITH PLASTIC CAP, TAG NO. 5814.

CALIFORNIA COORDINATE SYSTEM ORDER: FIRST ☐ SECOND ☐ THIRD ☐
STATIONS USED: NGS (USC & GS) ☐ STATE ☐ COUNTY ☐ OTHER ☐ STATION STATION
ZONE ELEVATION NORTHINGS (Y) EASTINGS (X)

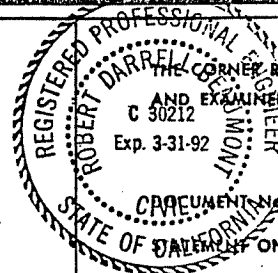
SKETCH: (Include reference tie or witness points, remarks and topo of area)



SURVEYOR'S CERTIFICATE

THIS CORNER RECORD WAS PREPARED BY ME OR UNDER MY
DIRECTION IN CONFORMANCE WITH THE LAND SURVEYORS ACT

SIGNED: William E. Schroeder
C. No.



COUNTY SURVEYOR'S CERTIFICATE

THIS CORNER RECORD WAS RECEIVED 2/16 1989
AND EXAMINED AND FILED 2/16 1989
BY: DDZ
FILE: DCS

REMARKS ON BACK OF SHEET

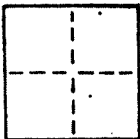
SEAL

YES ☐ NO ☒

CORNER RECORD

3 of 4

COUNTY OF MARIN T. _____ R. _____ MERIDIAN _____ CALIFORNIA
 CORNER TYPE: GOV'T. CORNER ☐ MEANDER ☐ RANCHO ☐ CONTROL ☐ OTHER ☐
 CORNER IDENTIFICATION — DATE OF VISIT 12-14 19 88.



CORNER — LEFT AS FOUND ☐ FOUND AND TAGGED ☐ REESTABLISHED OBLITERATED CORNER ☐ REBUILT ☐

PHYSICAL DESCRIPTION OF CORNER FOUND; EVIDENCE AND METHOD USED TO IDENTIFY OR REESTABLISH

BASED ON FOUND MONUMENTS AS SHOWN ON "MAP OF HAWTHORNE TERRACE"
 FILED IN BOOK 6 OF MAPS AT PAGE 22, MARIN COUNTY RECORDS.

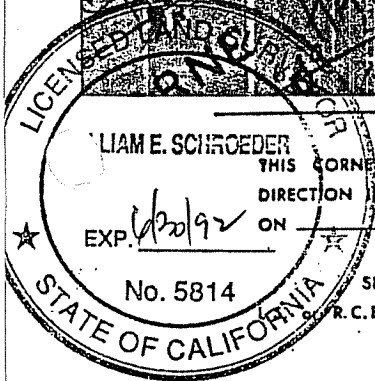
Ap# 55-191-04

PHYSICAL DESCRIPTION OF MONUMENTS, REBUILT OR PERPETUATED

SET 3/4" I.P. WITH PLASTIC CAP, TAG NO. 5814.

CALIFORNIA COORDINATE SYSTEM ORDER: FIRST ☐ SECOND ☐ THIRD ☐
 STATIONS USED: NGS (USC & GS) ☐ STATE ☐ COUNTY ☐ OTHER ☐ STATION _____ STATION _____
 ZONE _____ ELEVATION _____ NORTHINGS (Y) _____ EASTINGS (X) _____

SKETCH: (Include reference tie or witness points, remarks and topo of area)

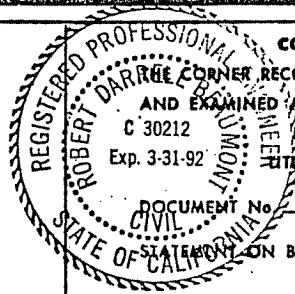


SURVEYOR'S CERTIFICATE

THIS CORNER RECORD WAS PREPARED BY ME OR UNDER MY
 DIRECTION IN CONFORMANCE WITH THE LAND SURVEYORS ACT
 ON 11/17 19 89

SIGNED Liam E. Schroeder

R.C.E. No.: _____



COUNTY SURVEYOR'S CERTIFICATE

THIS CORNER RECORD WAS RECEIVED 2/16 19 89
 AND EXAMINED AND FILED 2/16 19 89

BY: RDB
 TITLE: DCS

DOCUMENT NO. _____

ON BACK OF SHEET

SEAL

YES ☐

NO ☒

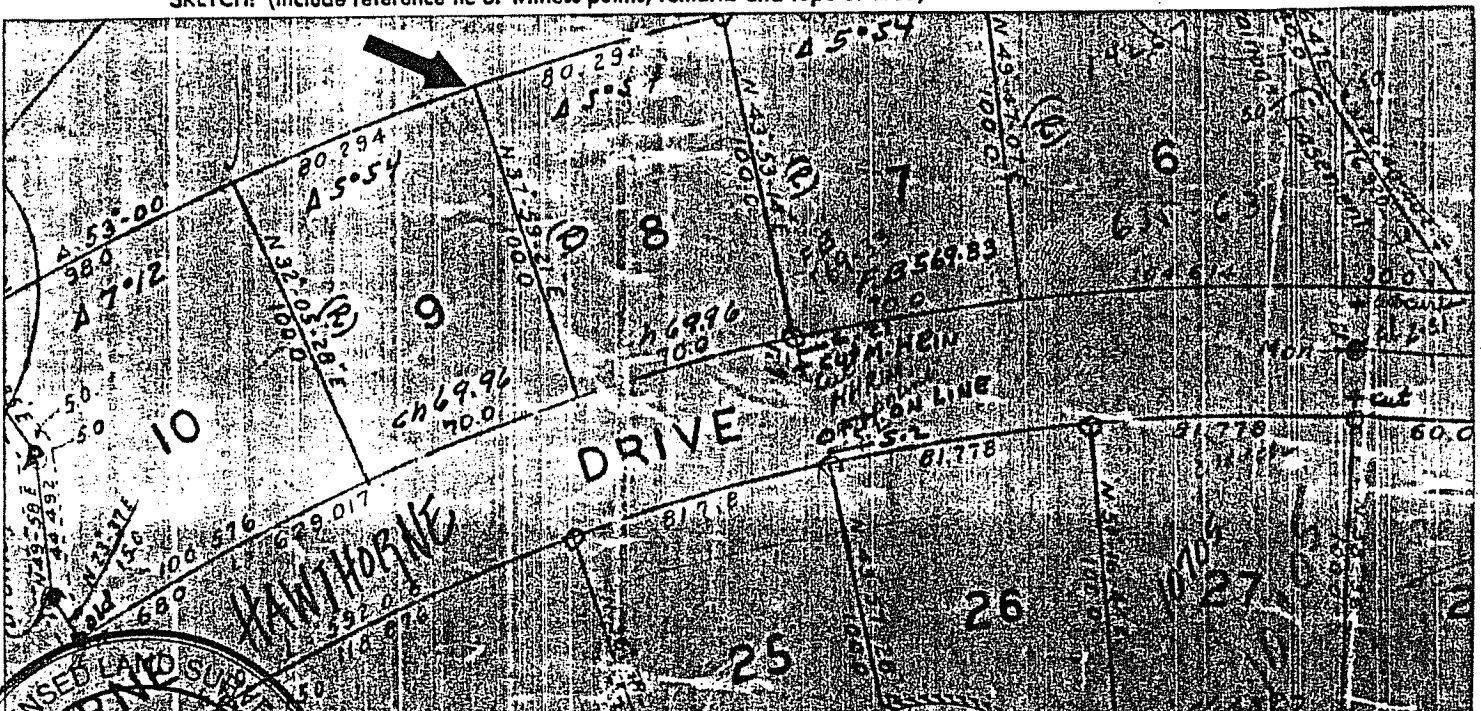
4 of 4

PHYSICAL DESCRIPTION OF CORNER FOUND; EVIDENCE AND METHOD USED TO IDENTIFY OR REESTABLISH

AP# 55-191-04

SET 3/4" I.P. WITH PLASTIC CAP TAG NO. 5814.

SKETCH: (Include reference tie or witness points, remarks and topo of area)



SIGNED:
E. No.:

RECEIVED: 6 Dec 82

DOCUMENTS. —

STATEMENT ON BACK OF SHEET

YES ☐ NO ☒