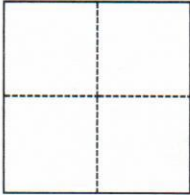


CORNER RECORD

Agency Index CR22-136
Document Number 055-193-06

City of TIBURON County of MARIN, California
Brief Legal Description LOT 6 OF VOL 13 OF MAPS PAGE 58

CORNER TYPE



- ☐ Government Corner ☐ Control
☐ Meander ☒ Property
☐ Rancho ☐ Other

Date of Survey 9/30/21

COORDINATES (Optional)

N. _____ E. _____
Elevation _____
Units ☐ Metric ☐ U.S. Survey Foot
Horizontal Datum _____
Zone _____ Epoch Date _____
Vertical Datum _____
☐ Complies with Public Resources Code §§8801-8819
☐ Complies with Public Resources Code §§8890-8902

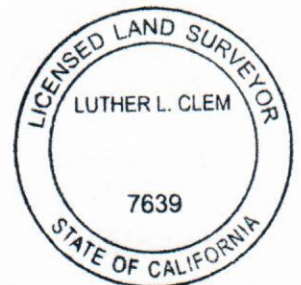
PLS Act Ref.: ☒ 8765(d) ☐ 8771 ☐ 8773 ☐ Other:
Corner/Monument: ☐ Left as found ☐ Established ☐ Rebuilt ☐ Pre-Construction
☐ Found and tagged ☒ Reestablished ☐ Referenced ☐ Post-Construction

Narrative of corner identified and monument as found, set, reset, replaced, or removed:
☒ See sheet #2 for description(s):

SURVEYOR'S STATEMENT

This Corner Record was prepared by me or under my direction in conformance with
the Professional Land Surveyors' Act on 9/30/21

Signed [Signature] P.L.S. or R.C.E. No. 7639



COUNTY SURVEYOR'S STATEMENT

This Corner Record was received October 21, 2022

and examined and filed October 27, 2022

Signed T.W.P. P.L.S. [Redacted] No. 8176

Title County Surveyor

County Surveyor's Comment



NOTE

MEASURED EQUALS
RECORD IN SHOWN
DIMENSIONS

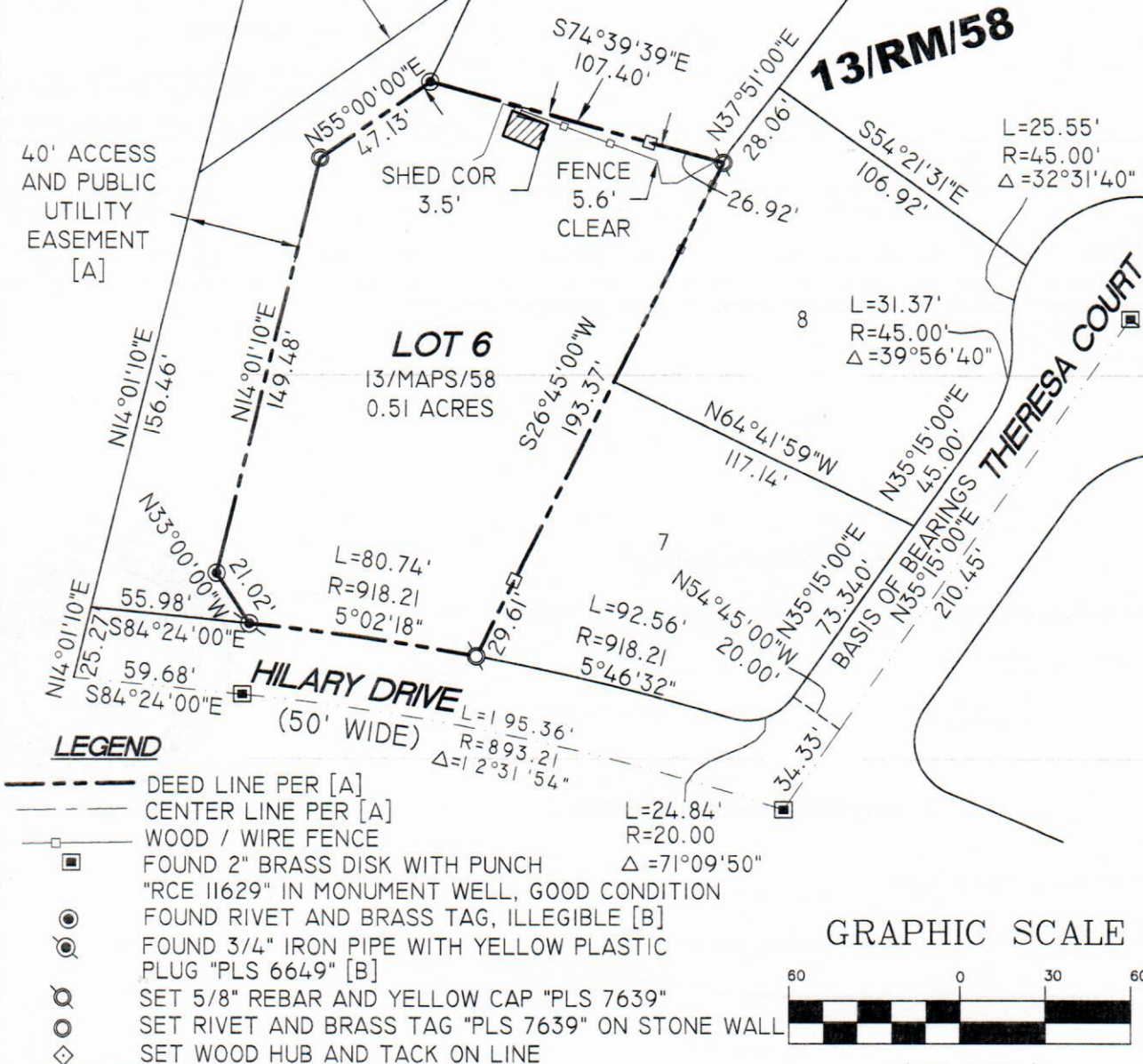
20' ACCESS
AND PUBLIC
UTILITY
EASEMENT
[A]

40' ACCESS
AND PUBLIC
UTILITY
EASEMENT
[A]

BASIS OF BEARING

THE MONUMENT LINE ON
THERESA COURT N35°15'00"E,
PER [A] AS SHOWN HEREON.

SCALE 1"=60'

**MAP REFERENCE**

- [A] RECORD OF SURVEY FILED IN BOOK
2009 OF MAPS PAGE 127, MARIN COUNTY
OFFICIAL RECORDS.
- [B] MAP OF HILARY HEIGHTS, IN THE CITY OF
TIBURON" FILED IN VOL 13 OF MAPS PAGE 58,
MARIN COUNTY OFFICIAL RECORDS.

GEOMETRIX
SURVEYING ENGINEERING INC.
(415) 422-0527