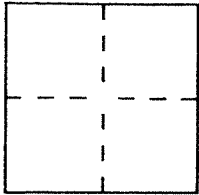


CORNER RECORD

Document Number 55-143-04City of TiburonCounty of Marin, CaliforniaBrief Legal Description Lot 24 Delmar Estates Unit 1 8 RM 102

CORNER TYPE

Government Corner ☐ Control ☐
Meander ☐ Property ☒
Rancho ☐ Other ☐
Date of Survey 11/11/2000

COORDINATES (Optional)

N. _____
E. _____
Zone _____ Datum _____
Elev. _____

Corner — Left as found ☐ Found and tagged ☐ Established ☒ Reestablished ☐ Rebuilt ☐

Identification and type of corner found: Evidence used to identify or procedure used to establish or reestablish the corner:

Found standard street monuments on the centerline of Avenida
Miraflores per 8 RM 102.

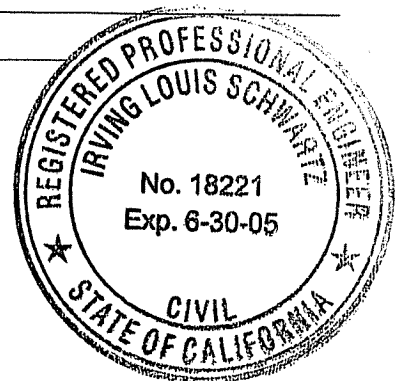
A description of the physical condition of the monument as found and as set or reset: _____

Set 3/4" l.p. & tag RCE 18221 unless shown otherwise
as shown on Exhibit A.

SURVEYOR'S STATEMENT

This Corner Record was prepared by me or under my direction in conformance with
the Land Surveyors' Act on JULY 31 2003

Signed [Signature] L.S. or R.C.E. Number 18221



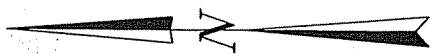
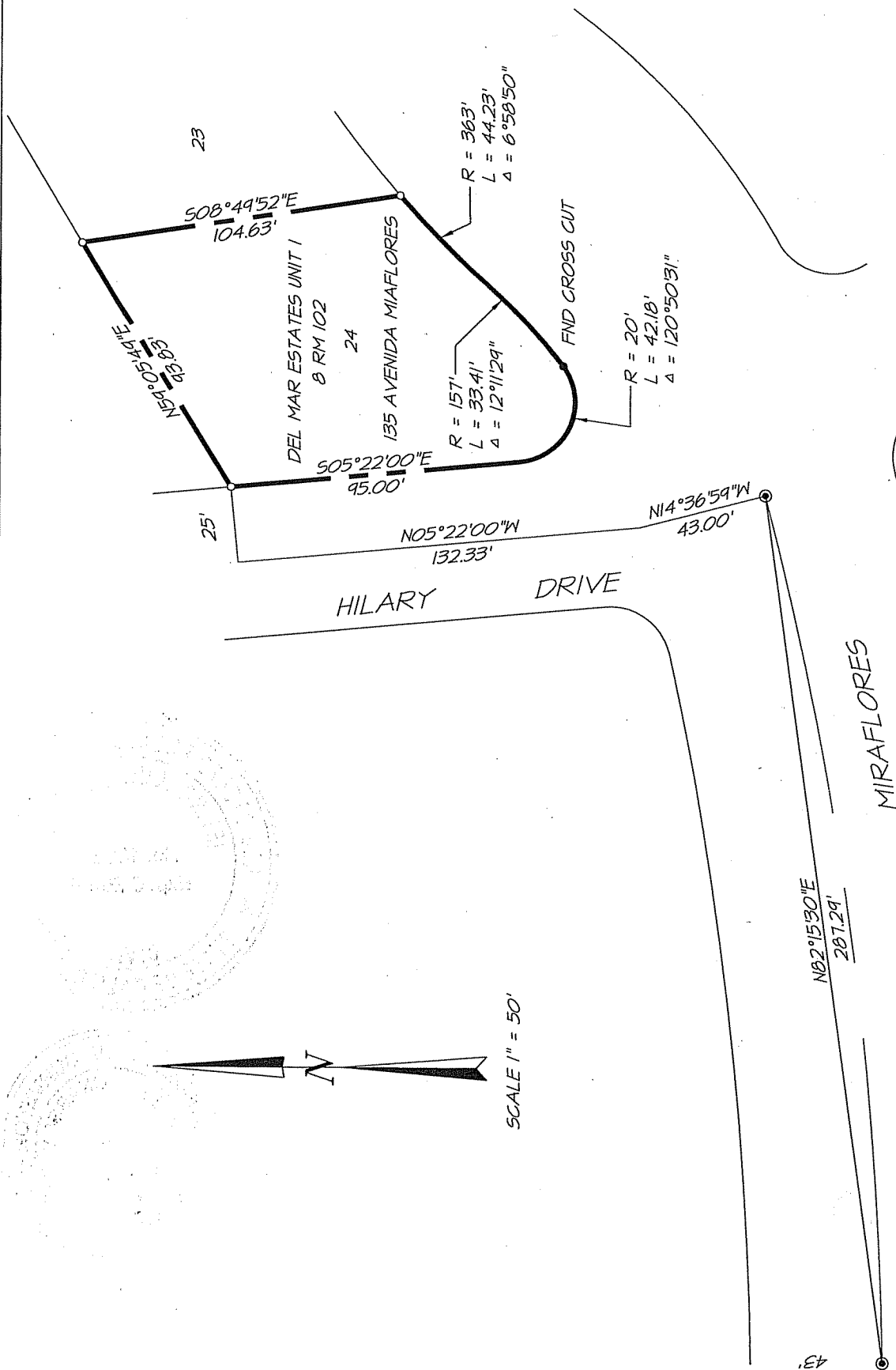
COUNTY SURVEYOR'S STATEMENT

This Corner Record was received AUGUST 5, 2003 and examined
and filed AUGUST 18, 2003.

Signed [Signature] Title COUNTY SURVEYOR



County Surveyor's Comment _____



SCALE 1" = 50'

EXHIBIT "A"



ILS ASSOCIATES, INC.®
 CIVIL ENGINEERING AND LAND SURVEYING

70 GALLI DRIVE, SUITE A, NOVATO, CA 94949-5717 (415)883-9200 FAX (415)883-2783

NOTE:
 ALL DIMENSIONS SHOWN HEREON ARE PER
 8 RM 102 UNLESS OTHERWISE NOTED.

- LEGEND**
- FOUND STANDARD STREET MONUMENT
 - SET 3/4" IRON PIPE & TAG "R.C.E. 18221" UNLESS NOTED OTHERWISE

DATE: 07/14/03
 FILE: 7171REC.DWG