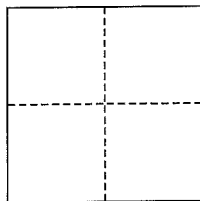


# CORNER RECORD

City of Tiburon

Document Number AP# 055-142-21  
County of Marin, California

Brief Legal Description Portions of Lot 3 & 9, 8 RM 102



## CORNER TYPE

Government Corner ☐ Control ☐  
Meander ☐ Property ☒  
Rancho ☐ Other ☐  
Date of Survey \_\_\_\_\_

## COORDINATES (Optional)

N. \_\_\_\_\_  
E. \_\_\_\_\_  
Zone \_\_\_\_\_ NAD27 ☐ NAD83 ☐  
NAD83 Epoch \_\_\_\_\_  
Elev. \_\_\_\_\_  
Vert. Datum: NGVD29 ☐ NAVD88 ☐  
Meas. Units: Metric ☐ Imperial ☐

Corner- Left as found ☐ Found and tagged ☐ Established ☒ Reestablished ☐ Rebuilt ☐

Identification and type of corner found: Evidence used to identify or procedure used to establish or reestablish the corner:  
Found Standard Street Monuments as shown hereon, Per 8 RM 102

A description of the physical condition of the monument as found and as set or reset: All Property Corners and  
Property Line points were set as shown hereon, per 8 RM 102.

## SURVEYOR'S STATEMENT

This corner Record was prepared by me or under my direction in conformance with

the Land Surveyor's Act on April 11, 2014

Signed [Signature] P.L.S. or R.C.E. No. 30465



## COUNTY SURVEYOR'S STATEMENT

This Corner Record was received FEB. 11, 2014

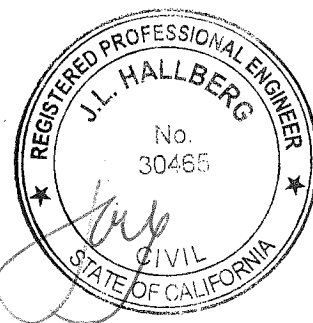
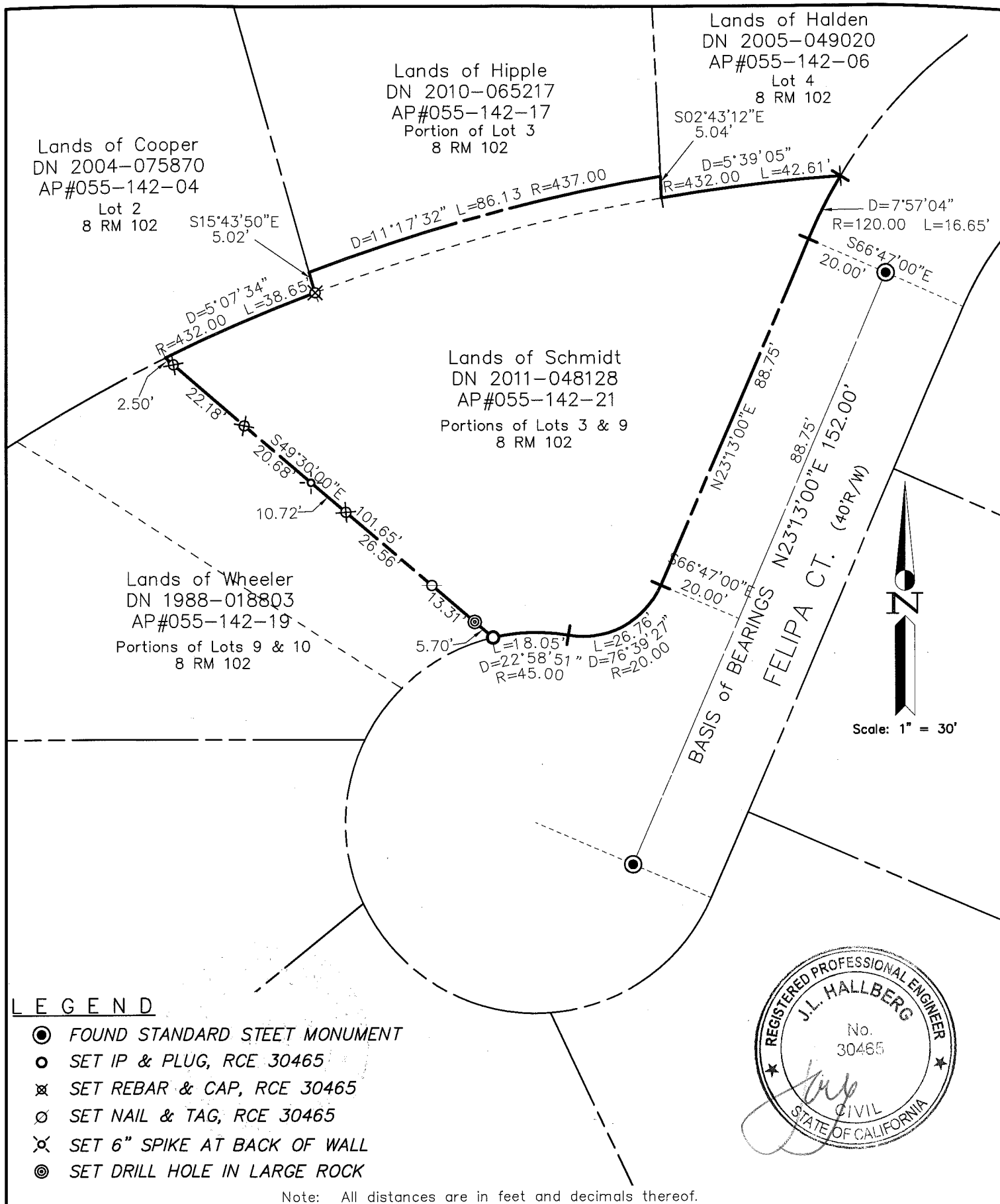
and examined and filed MAY 5, 2014

Signed [Signature] P.L.S. or R.C.E. No. 7821

Title DEPUTY



County Surveyor's Comment \_\_\_\_\_



SHEET	1	OF	1
SCALE:	1" = 30'	DESIGN:	E.D.L.
DATE:	Apr 2014	DRAWN:	E.D.L.
FILE:	2013-107	CHECKED:	J.L.H
2013-107\DWG\2013-107-BASE,COR-REC			

**J.L. ENGINEERING**  
CIVIL ENGINEERS-LAND SURVEYORS  
1539 4th ST., SAN RAFAEL, CA. 94901 (415) 457-6647

**Corner Record**

Lands of Schmidt - 4 Felipa Ct.  
APN 055-142-21, Tiburon, Marin County, CA