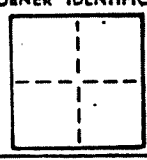


# CORNER RECORD

COUNTY OF Marin T. 1 R. 1 MERIDIAN California  
CORNER TYPE: GOV'T. CORNER ☐ MEANDER ☐ RANCHO ☐ CONTROL ☐ OTHER ☒  
CORNER IDENTIFICATION — DATE OF VISIT                      1988



CORNER — LEFT AS FOUND ☐ FOUND AND TAGGED ☐ REESTABLISHED OBLITERATED CORNER ☐ REBUILT ☐

## PHYSICAL DESCRIPTION OF CORNER FOUND; EVIDENCE AND METHOD USED TO IDENTIFY OR REESTABLISH

Set a 3/4" iron pipe with plastic plug embossed "LS 4788" at the most southerly corner of Lot 1, "Map of Little Reed Heights Subdivision" filed in Book 6 of Maps at Page 76, Marin County Records.

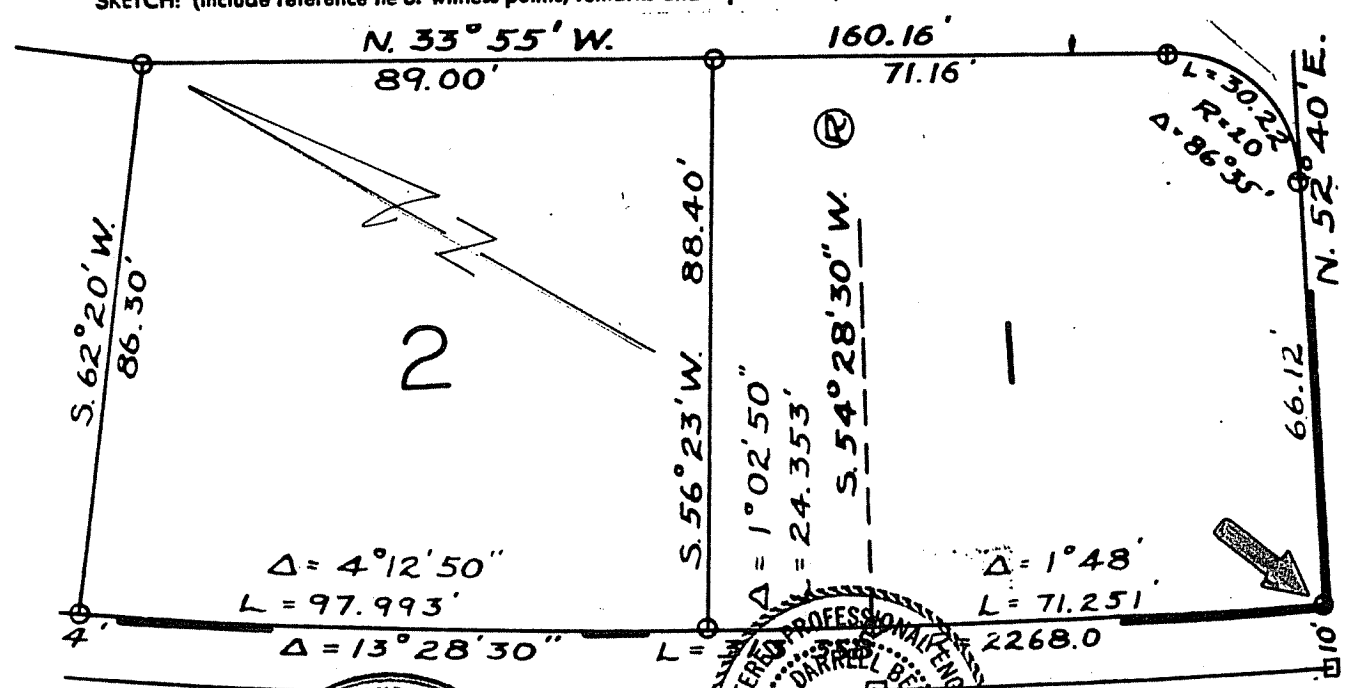
AP 55-081-23

## PHYSICAL DESCRIPTION OF MONUMENTS, REBUILT OR PERPETUATED

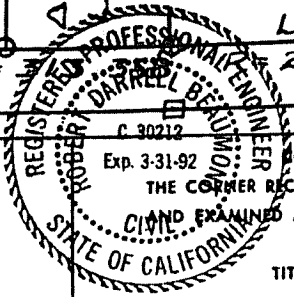
As shown

CALIFORNIA COORDINATE SYSTEM ORDER: FIRST ☐ SECOND ☐ THIRD ☐  
STATIONS USED: NGS (USC & GS) ☐ STATE ☐ COUNTY ☐ OTHER ☐ STATION                       
ZONE                      ELEVATION                      NORTHINGS (Y)                      EASTINGS (X)                     

## SKETCH: (Include reference tie or witness points, remarks and topo of area)



THIS CORNER RECORD WAS PREPARED BY ME OR UNDER MY DIRECTION IN CONFORMANCE WITH THE LAND SURVEYORS ACT ON May No. 4788 1988  
SIGNED: [Signature]  
L.S. or R.C.E. No.:                     



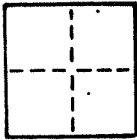
COUNTY SURVEYOR'S CERTIFICATE  
THE CORNER RECORD WAS RECEIVED 5/25 1988  
AND EXAMINED AND FILED 5/25 1988  
BY: DDP  
TITLE:                     

DOCUMENT No.                     

STATEMENT ON BACK OF SHEET

## CORNER RECORD

COUNTY OF Marin T. \_\_\_\_\_ R. \_\_\_\_\_ MERIDIAN \_\_\_\_\_ CALIFORNIA  
 CORNER TYPE: GOV'T. CORNER ☐ MEANDER ☐ RANCHO ☐ CONTROL ☐ OTHER ☒  
 CORNER IDENTIFICATION — DATE OF VISIT \_\_\_\_\_ 19\_\_\_\_



CORNER — LEFT AS FOUND ☐ FOUND AND TAGGED ☐ REESTABLISHED OBLITERATED CORNER ☐ REBUILT ☐

PHYSICAL DESCRIPTION OF CORNER FOUND; EVIDENCE AND METHOD USED TO IDENTIFY OR REESTABLISH

Set a 3/4" iron pipe with plastic plug embossed "LS 4788" at the most northerly corner of Lot 1, "Map of Little Reed Heights Subdivision" filed in Book 6 of Maps at Page 76, Marin County Records.

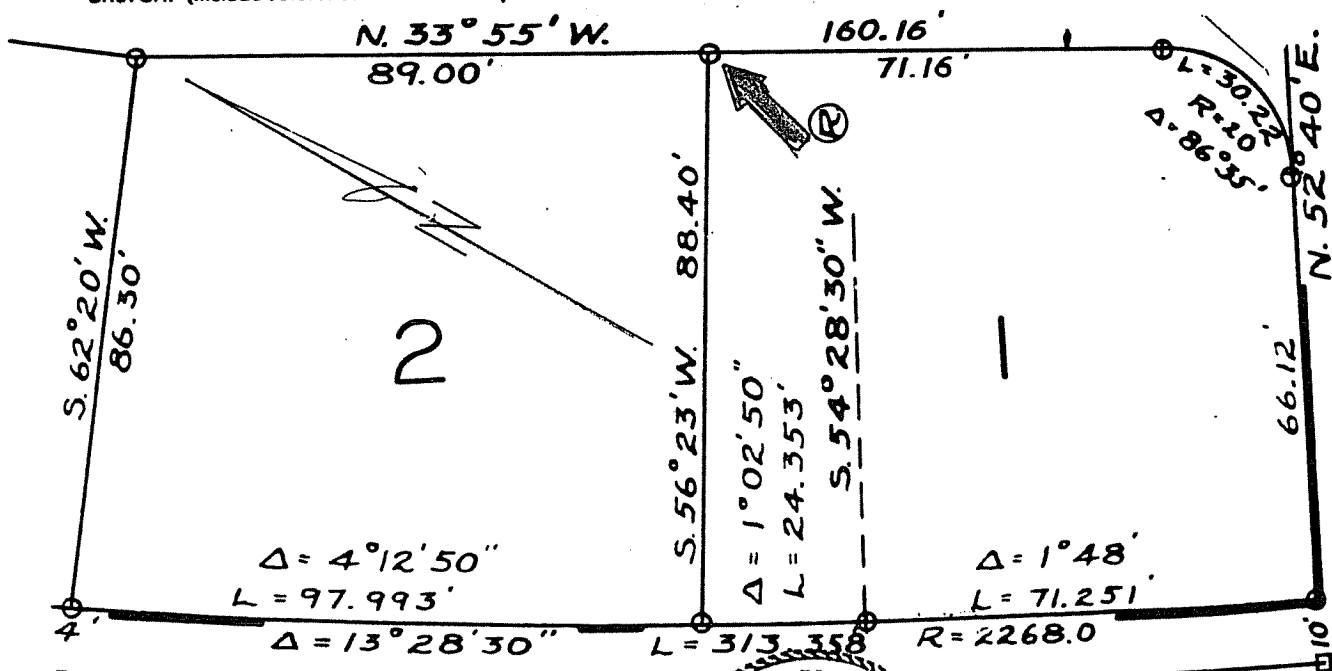
AP 55-081-23

PHYSICAL DESCRIPTION OF MONUMENTS REBUILT OR PERPETUATED

As shown

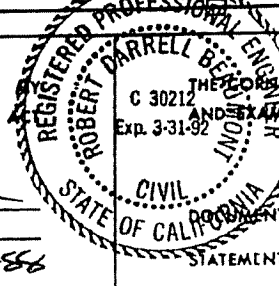
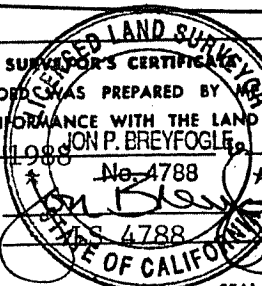
CALIFORNIA COORDINATE SYSTEM ORDER: FIRST ☐ SECOND ☐ THIRD ☐  
 STATIONS USED: NGS (USC & GS) ☐ STATE ☐ COUNTY ☐ OTHER ☐ STATION \_\_\_\_\_ STATION \_\_\_\_\_  
 ZONE \_\_\_\_\_ ELEVATION \_\_\_\_\_ NORTHINGS (Y) \_\_\_\_\_ EASTINGS (X) \_\_\_\_\_

SKETCH: (Include reference tie or witness points, remarks and topo of area)



THIS CORNER RECORD WAS PREPARED BY \_\_\_\_\_ OR UNDER  
 DIRECTION IN CONFORMANCE WITH THE LAND SURVEYORS  
 ON 6 May 1988 JOHN P. BREYFOGLE  
 No. 4788

SIGNED: \_\_\_\_\_  
 L.S. or R.C.E. No.: \_\_\_\_\_



COUNTY SURVEYOR'S CERTIFICATE

THIS CORNER RECORD WAS RECEIVED 5/24 1988  
 AND EXAMINED AND FILED 5/25 1988  
 BY: RDB  
 TITLE: DC 212

STATEMENT ON BACK OF SHEET

YES ☐ NO ☒


## CORNER RECORD

CORNER RECORD

COUNTY OF Marin T. \_\_\_\_\_ R. \_\_\_\_\_ MERIDIAN CALIFORNIA

CORNER TYPE: GOV'T. CORNER ☐ MEANDER ☐ RANCHO ☐ CONTROL ☐ OTHER ☒

CORNER IDENTIFICATION — DATE OF VISIT \_\_\_\_\_ 19\_\_\_\_



CORNER — LEFT AS FOUND ☐ FOUND AND TAGGED ☐ REESTABLISHED OBLITERATED CORNER ☐ REBUILT ☐

PHYSICAL DESCRIPTION OF CORNER FOUND; EVIDENCE AND METHOD USED TO IDENTIFY OR REESTABLISH

Set a 3/4" iron pipe with plastic plug embossed "LS 4788" at the most westerly corner of Lot 1, "Map of Little Reed Heights Subdivision" filed in Book 6 of Maps at Page 76, Marin County Records.

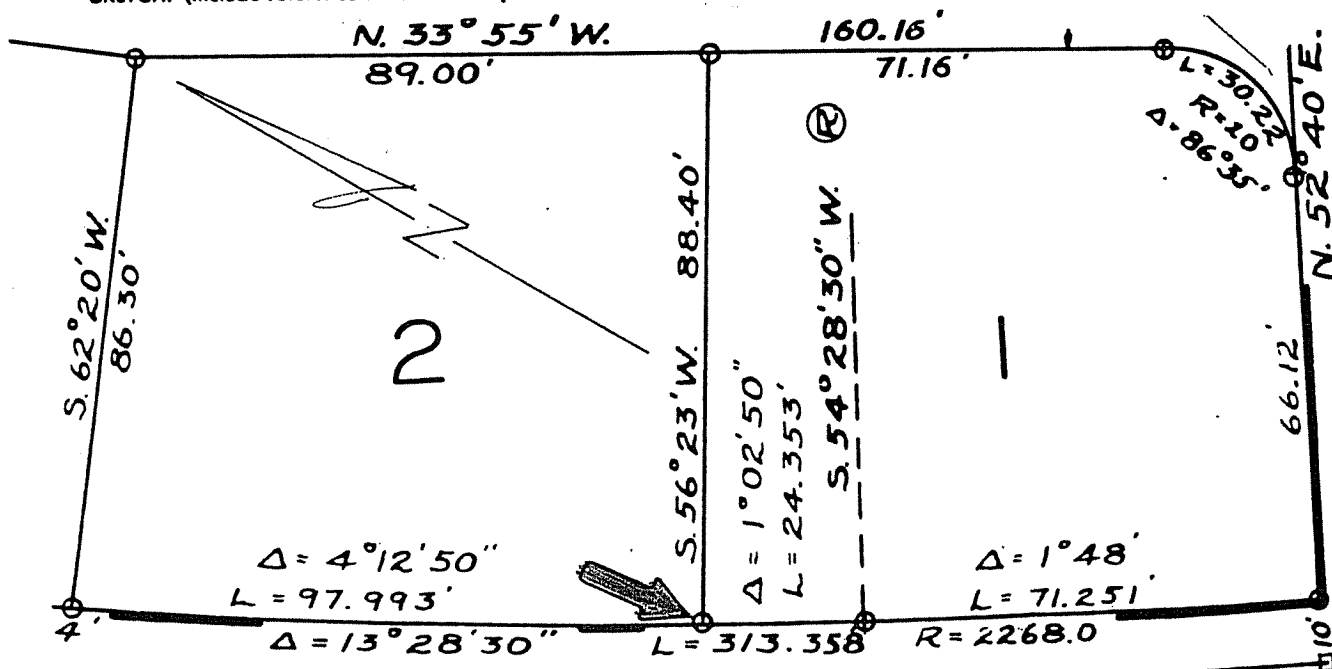
AP 55-081-23

PHYSICAL DESCRIPTION OF MONUMENTS REBUILT OR PERPETUATED

As shown

CALIFORNIA COORDINATE SYSTEM ORDER: FIRST ☐ SECOND ☐ THIRD ☐  
STATIONS USED: NGS (USC & GS) ☐ STATE ☐ COUNTY ☐ OTHER ☐ STATION \_\_\_\_\_ STATION \_\_\_\_\_  
ZONE \_\_\_\_\_ ELEVATION \_\_\_\_\_ NORTHINGS (Y) \_\_\_\_\_ EASTINGS (X) \_\_\_\_\_

**SKETCH:** (Include reference tie or witness points, remarks and topo of area)



THIS CORNER RECORD WAS PREPARED BY ME OR UNDER MY  
DIRECTION IN CONFORMANCE WITH THE LAND SURVEYORS ACT  
ON May 14 1988 JOHN P. BREYFOGLE

**SIGNED**

L.S. or R.C.E. No.:

DAWSON COUNTY SURVEYOR'S CERTIFICATE  
THE CORNER RECORD WAS RECEIVED 5/24  
AND EXAMINED AND FILED 5/25 1992  
BY RDB  
TITLE R2  
Exp. 3-31-92

Exp. 3-31-92

## 2. DEFINITIONS

•

OF GALILEE

STATEMENT

# COUNTY SURVEYOR'S CERTIFICATE

RECORD WAS RECEIVED 5/24

11-11-61

DEAND FILED 2/6/5 195

1225

22

FILE: ALB

\_\_\_\_\_

5.5 \_\_\_\_\_

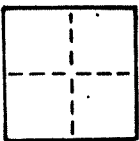
100-443887-1

**ON BACK OF SHEET**

YES ☒

## CORNER RECORD

COUNTY OF Marin T. 1 R. 1 MERIDIAN CALIFORNIA  
 CORNER TYPE: GOV'T. CORNER ☐ MEANDER ☐ RANCHO ☐ CONTROL ☐ OTHER ☒  
 CORNER IDENTIFICATION — DATE OF VISIT 19



CORNER — LEFT AS FOUND ☐ FOUND AND TAGGED ☐ REESTABLISHED OBLITERATED CORNER ☐ REBUILT ☐

PHYSICAL DESCRIPTION OF CORNER FOUND; EVIDENCE AND METHOD USED TO IDENTIFY OR REESTABLISH

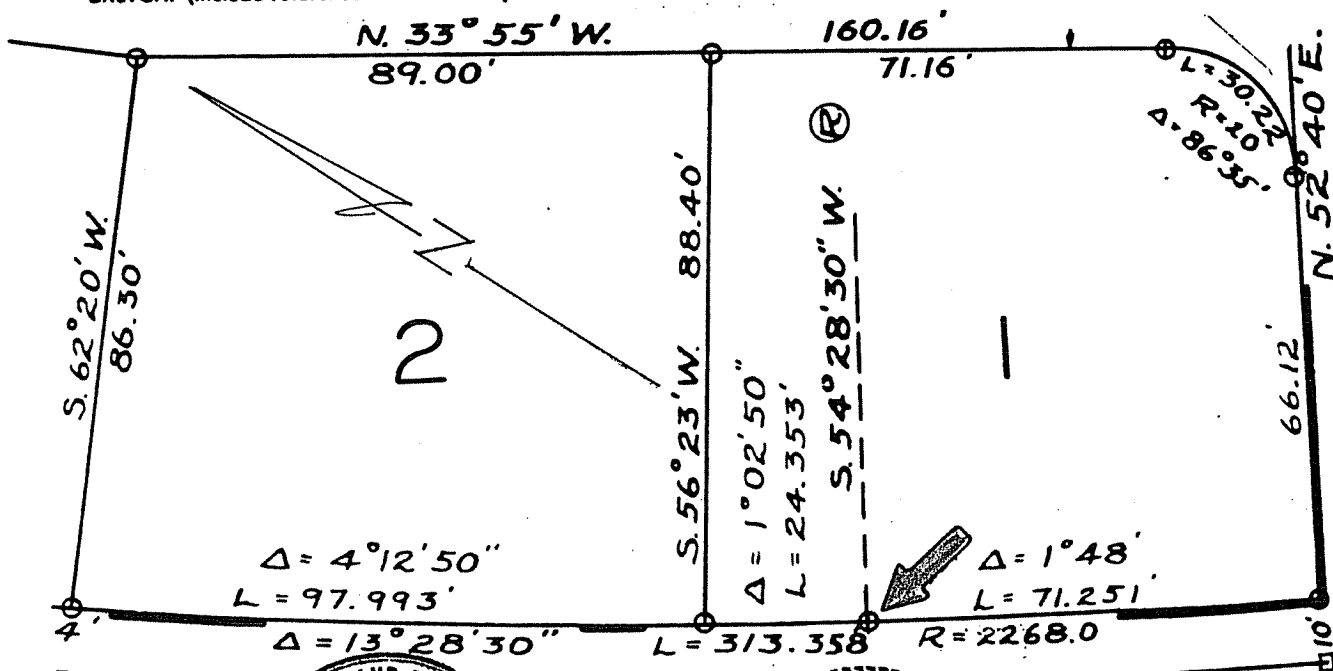
Set a 3/4" iron pipe with plastic plug embossed "LS 4788" at the point of compound curvature in the westerly line of Lot 1, Map of Little Reed Heights Subdivision" filed in Book 6 of Maps at Page 76, Marin County Records  
 AP 55-081-23

PHYSICAL DESCRIPTION OF MONUMENTS REBUILT OR PERPETUATED

As shown

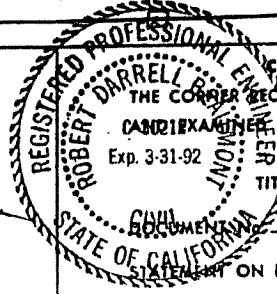
CALIFORNIA COORDINATE SYSTEM ORDER: FIRST ☐ SECOND ☐ THIRD ☐  
 STATIONS USED: NGS (USC & GS) ☐ STATE ☐ COUNTY ☐ OTHER ☐ STATION            STATION             
 ZONE            ELEVATION            NORTHINGS (Y)            EASTINGS (X)           

SKETCH: (Include reference tie or witness points, remarks and topo of area)



THIS CORNER RECORD WAS PREPARED BY ME OR UNDER MY DIRECTION IN CONFORMANCE WITH THE LAND SURVEYORS ACT ON May 6 No. 4788

SIGNED [Signature]  
 L.S. or R.C.E. No. 023088



COUNTY SURVEYOR'S CERTIFICATE

THE CORNER RECORD WAS RECEIVED 5/24 1988

CANDIDATE AND FILED 5/25 1988

Exp. 3-31-92

TITLE: DES

STATE OF CALIFORNIA

STATEMENT ON BACK OF SHEET

YES ☐ NO ☒