

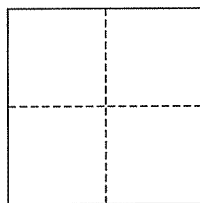
**CORNER RECORD**

Document Number AP# 052-530-19

City of Marin City

County of Marin, California

Brief Legal Description Lot 19, 21 RM 42



**CORNER TYPE**

Government Corner  Control   
Meander  Property   
Rancho  Other   
Date of Survey February 8, 2012

**COORDINATES (Optional)**

N. \_\_\_\_\_  
E. \_\_\_\_\_  
Zone \_\_\_\_\_ NAD27  NAD83   
NAD83 Epoch \_\_\_\_\_  
Elev. \_\_\_\_\_  
Vert. Datum: NGVD29  NAVD88   
Meas. Units: Metric  Imperial

**Corner-** Left as found  Found and tagged  Established  Reestablished  Rebuilt

Identification and type of corner found: Evidence used to identify or procedure used to establish or reestablish the corner:  
Standard Centerline Street Monuments, per 21 RM 42.

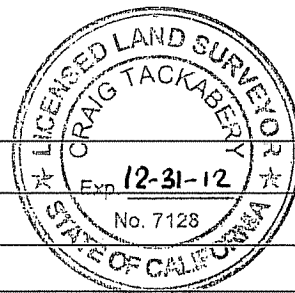
A description of the physical condition of the monument as found and as set or reset: All found monuments were found per 21 RM 42 in good condition and Iron Pipes & Plugs (RCE 30465), Rebar & Cap (RCE 30465), 2x2" Wood Hub & Tag (RCE 30465), and Hub & Tack were set along the Property Lines as shown hereon.

**SURVEYOR'S STATEMENT**

This corner Record was prepared by me or under my direction in conformance with the Land Surveyor's Act on March 9, 2012  
Signed [Signature] P.L.S. or R.C.E. No. 30465

**COUNTY SURVEYOR'S STATEMENT**

This Corner Record was received MARCH 12, 2012  
and examined and filed MARCH 14, 2012  
Signed [Signature] P.L.S. or R.C.E. No. 7128  
Title COUNTY SURVEYOR



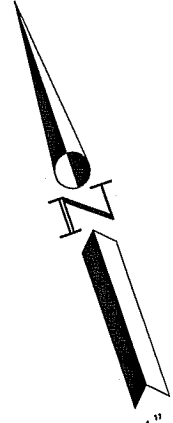
County Surveyor's Comment \_\_\_\_\_

**LEGEND**

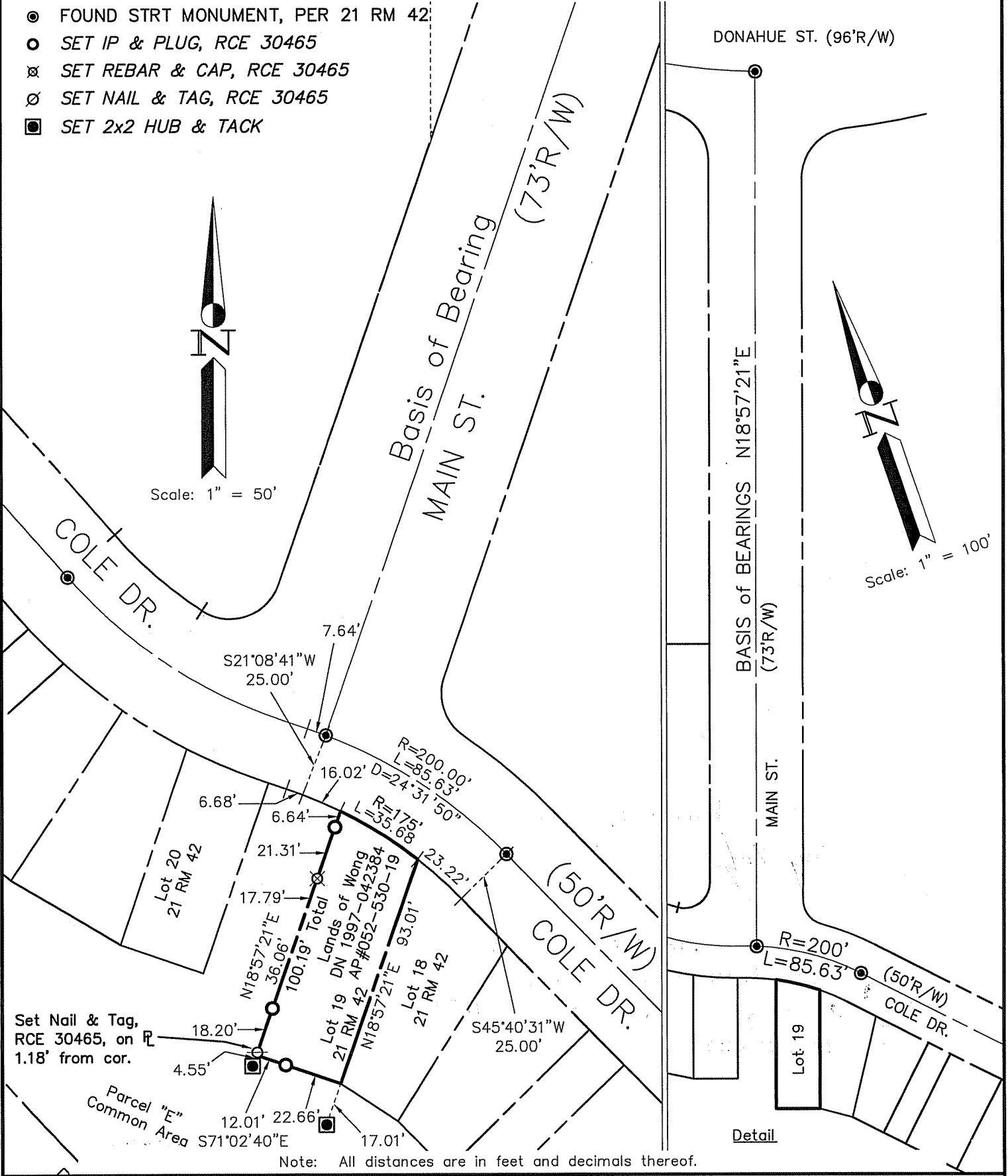
- ⊙ FOUND STRT MONUMENT, PER 21 RM 42
- SET IP & PLUG, RCE 30465
- ⊗ SET REBAR & CAP, RCE 30465
- ∅ SET NAIL & TAG, RCE 30465
- SET 2x2 HUB & TACK



Scale: 1" = 50'



Scale: 1" = 100'



Note: All distances are in feet and decimals thereof.

SHEET	1	OF	1
SCALE:	As Noted	DESIGN:	PR
DATE:	Feb 2012	DRAWN:	PR
FILE:	2012-012	CHECKED:	J.L.H

**J.L. ENGINEERING**  
 CIVIL ENGINEERS—LAND SURVEYORS  
 1539 4th ST., SAN RAFAEL, CA. 94901 (415) 457-6647

**Corner Record**  
 Lands of Wong - 37 Terrace Dr.  
 APN 052-530-19, Marin City, Marin County, CA