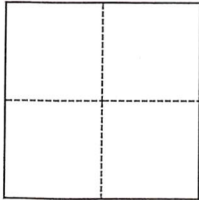


CORNER RECORD

Agency Index 21-009Document Number 052-130-17City of Sausalito County of Marin, CaliforniaBrief Legal Description Lot 18, Map of Marin City Redevelopment Project Unit 1, 10 Maps 59**CORNER TYPE****COORDINATES (Optional)**

- Government Corner Control
 Meander Property
 Rancho Other

N. _____ E. _____

Elevation _____

Units Metric U.S. Survey Foot

Horizontal Datum _____

Zone _____ Epoch Date _____

Vertical Datum _____

 Complies with Public Resources Code §§8801-8819 Complies with Public Resources Code §§8890-8902PLS Act Ref.: 8765(d) 8771 8773 Other:Corner/Monument: Left as found Established Rebuilt Pre-Construction Found and tagged Reestablished Referenced Post-Construction

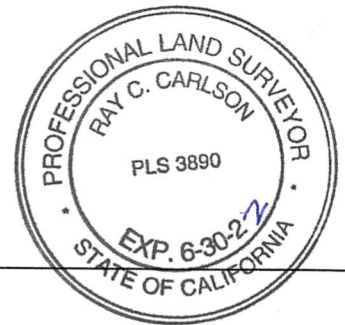
Narrative of corner identified and monument as found, set, reset, replaced, or removed:

 See sheet #2 for description(s):

Found and tied 5' offset Drake Street centerline monuments as shown and delineated on said 10 Maps 59, M.C.R., and as shown and delineated herein page 2 of 2, to establish Basis of Bearings and re-establish said Redevelopment Project Lot 18 corners.

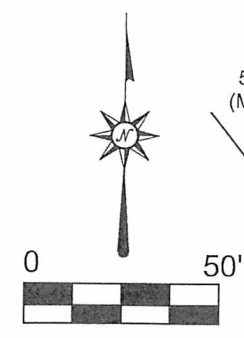
SURVEYOR'S STATEMENT

This Corner Record was prepared by me or under my direction in conformance with

the Professional Land Surveyors' Act on January 6, 2021Signed Ray C. Carlson P.L.S. or R.C.E. No. 3890**COUNTY SURVEYOR'S STATEMENT**This Corner Record was received 1-12-2021and examined and filed 5-11-2021Signed John R. Semerad P.L.S. or R.C.E. No. 9292Title Deputy

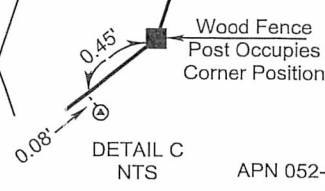
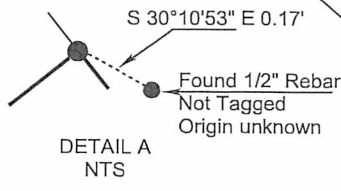
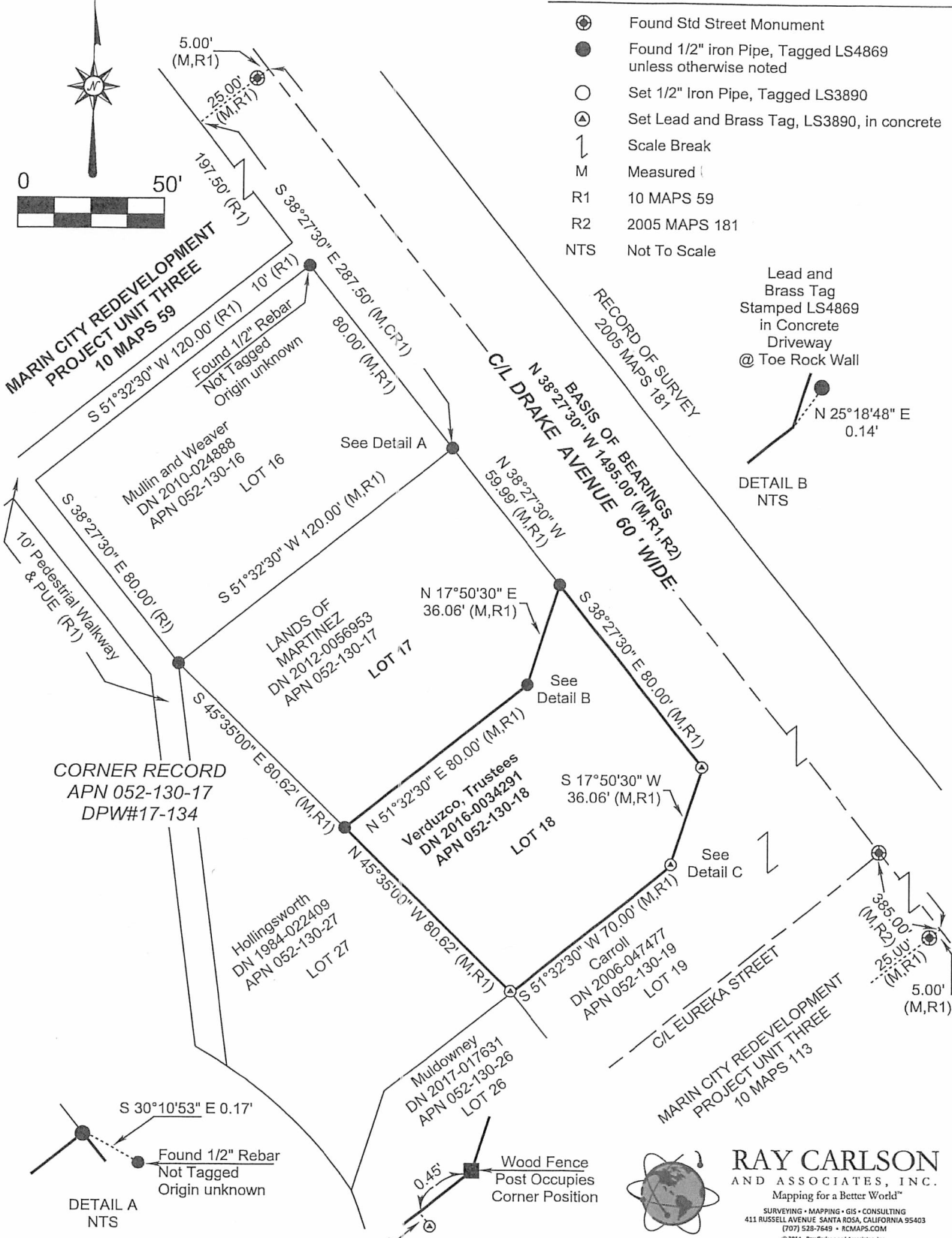
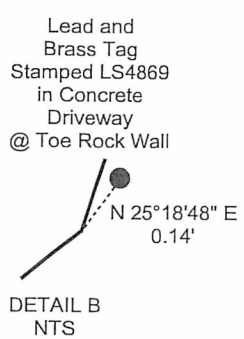
County Surveyor's Comment





LEGEND

- ⊕ Found Std Street Monument
- Found 1/2" iron Pipe, Tagged LS4869 unless otherwise noted
- Set 1/2" Iron Pipe, Tagged LS3890
- ⊕ Set Lead and Brass Tag, LS3890, in concrete
- ⌋ Scale Break
- M Measured
- R1 10 MAPS 59
- R2 2005 MAPS 181
- NTS Not To Scale



RAY CARLSON AND ASSOCIATES, INC.
 Mapping for a Better World™
 SURVEYING • MAPPING • GIS • CONSULTING
 411 RUSSELL AVENUE SANTA ROSA, CALIFORNIA 95403
 (707) 528-7649 • RCMAPS.COM
 © 2014, Ray Carlson and Associates, Inc.